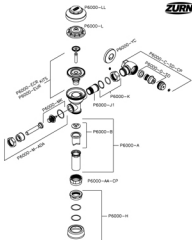


Aquaflush®

FLUSH VALVES

With Chemical and
Clog-Resistant Diaphragm



Standard Features on Aquaflush Flush Valves



High Pressure Vacuum Breaker



Low-Force, No Leak, ADA Handle

For Aquaflush PL - Add

Cast Wall Flange
with Tailpiece



Hand-Resistant
Control Stop Cover



Covers and Repair Kits	Product No.
Outside Cover - CP	P6000-L1-CP
Inside Cover	P6000-L
Low Consumption Closet Kit - 1.6 gal. flush	P6000-1CR-WS1
Water Saving Closet Kit - 3.5 gal. flush	P6000-ECR-WS
Full Flow Closet Kit - 4.5 gal. flush	P6000-ECR-FF
Low Consumption Urinal Kit - 1.8 gal. flush	P6000-1UR-WS1
Water Saving Urinal Kit - 1.5 gal. flush	P6000-1UR-WS
Full Flow Urinal Kit - 3.0 gal. flush	P6000-1UR-FF
Repair Parts - Inside Parts	Product No.
Urinal Relief Valve	P6000-1UR13
Closet Relief Valve	P6000-ECR13
Molded Disc	P6000-E14
Diaphragm with Flow Rings	P6000-1R15
Aquaflush Rebuild Kits	Product No.
Closet and Urinal Rebuild Kits	P6000-ECR-WS-RK P6000-ECR-WS1-RK P6000-1UR-WS-RK P6000-1UR-WS1-RK
Handle Assembly and Repair Kits	Product No.
ADA Handle Assembly (Side)	P6000-M-ADA
Handle Repair Kit (Side)	P6000-MK
Handle Seal	P6000-M9
Handle Gasket	P6000-M10

Handle Assembly and Repair Kits (cont'd.)	Product No.
Repair Kit for Front Operation - Exposed	P6000-MRK
Handle Assembly (Front)	P6000-MH
Control Stop Repair Kit and Parts	Product No.
Control Stop Repair Kit for 1" and 3/4"	P6000-D-50
Seal Seat for 1" and 3/4"	P6000-D42
SP Control Stop Repair Kit for 1" and 3/4"	P6000-D-VP
Sweet Solder Connection 1"	P6000-F6
Sweet Solder Connection 3/4"	P6000-F8
Adjustable Tailpieces	Product No.
Adjustable Tailpiece for Standard Flush Valve	P6000-J1
Tailpiece Locking Ring	P6000-C30
Tailpiece O-Ring	P6000-C31
Coupling Nut	P6000-C32
Flush Connections and Spud Coupling Kits	Product No.
Flush Tube Assembly for Flush Valves Specify diameter and length.	P6000-A
Vacuum Breaker Repair Kit	P6000-B
Spud Coupling Assembly Specify size.	P6000-H