

T&S BRASS AND BRONZE WORKS, INC.

2 SADDLEBACK COVE / P.O. BOX 1088 / TRAVELERS REST, SC 29690

PHONE 800-476-4103

FAX 864- 834-3518



REG.#A2601
ISO #9002

Model No.

B-2489

Item No.:

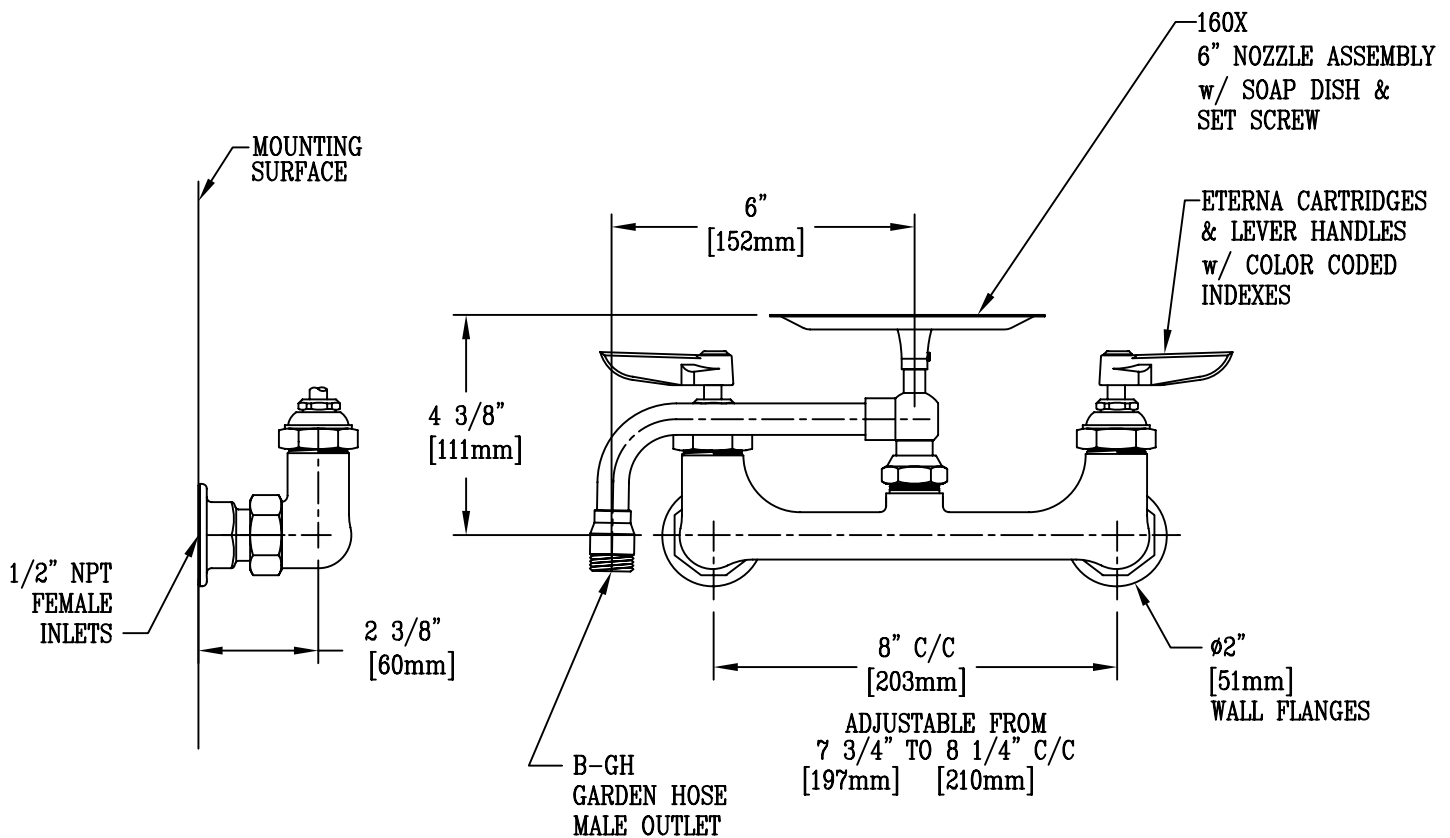
Job Name:

Architect/Engineer Approval:

Notes:



ADA COMPLIANT



NOTES:

1. SOAP DISH TURNS WITH NOZZLE.

Product Description:

8" c/c WALL MOUNTED MIXING FAUCET. w/ 1/2" NPT FEMALE INLETS, 6" SWING NOZZLE w/ SOAP DISH ATTACHMENT & LEVER HANDLES

Drawn:

KJG

Checked

DHL

Scale:

1:4

Approved

JHB

Date:

10/05/09