



T&S BRASS AND BRONZE WORKS, INC.

2 Saddleback Cove / P.O. Box 1088
Travelers Rest, SC 29690



REG. #A2601
ISO #9001

Model No.

B-0290-PRISON

Item No.

Travelers Rest, SC: 800-476-4103 Simi Valley, CA: 800-423-0150

www.tsbrass.com

This Space for Architect/Engineer Approval

Job Name _____ Date _____

Model Specified _____ Quantity _____

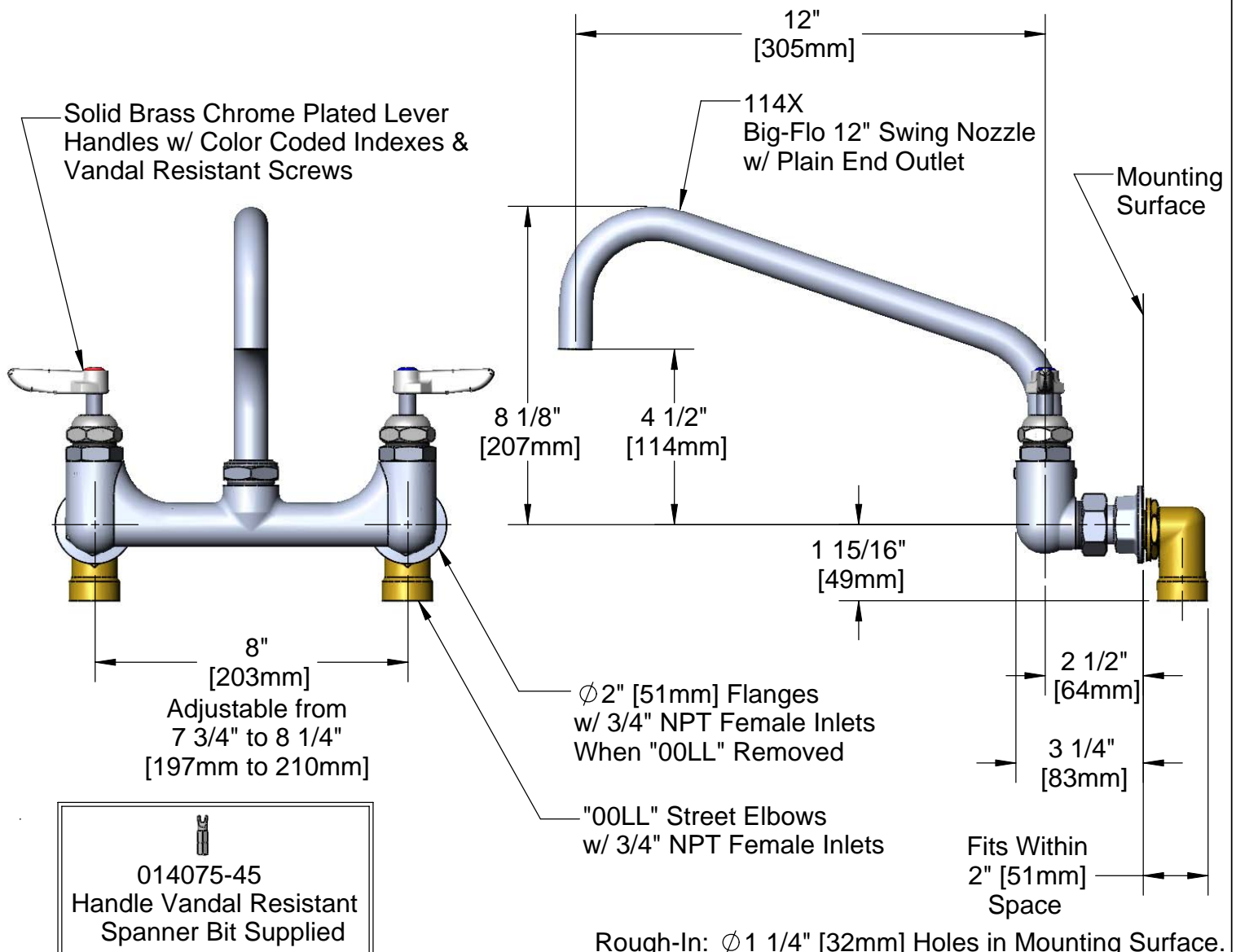
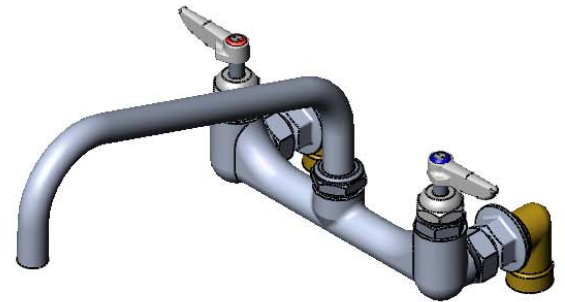
Customer/Wholesaler _____

Contractor _____

Architect/Engineer _____



ADA Compliant



Product Specifications:

Kettle & Pot Sink Mixing Faucet w/ Big-Flo 12" Swing Nozzle, Solid Brass Chrome Plated Lever Handles w/ VR Screws, Color Coded Indexes & "00LL" Street Elbows

Drawn
DHL

Checked
KJG

Approved
JHB

Scale:

1:4

Date:

05/11/09

Sheet: 1 of 2



T&S BRASS AND BRONZE WORKS, INC.

2 Saddleback Cove / P.O. Box 1088
Travelers Rest, SC 29690



REG. #A2601
ISO #9001

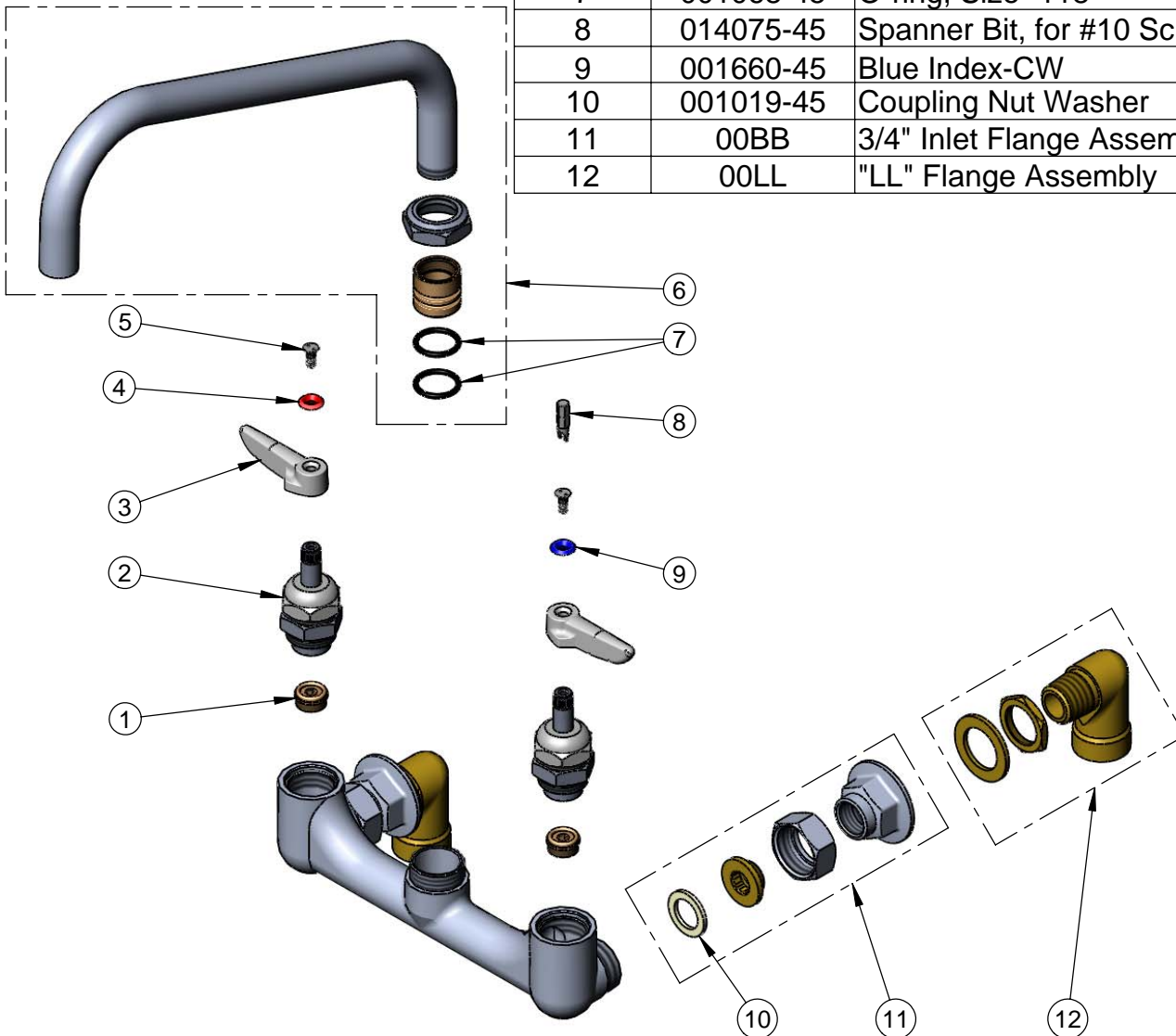
Model No.

B-0290-PRISON

Item No.

Travelers Rest, SC: 800-476-4103 Simi Valley, CA: 800-423-0150 Fax: 864-834-3518 www.tsbrass.com

ITEM NO.	SALES NO.	DESCRIPTION
1	000764-20	Seat, B-290 RM
2	006482-40	Spindle Asm, B-0290 (RH)
3	010027-40	Solid Brass Chrome Plated Lever Handle
4	001661-45	Red Index-HW
5	011755-45	VR Screw
6	114X	12" Big-Flo Swing Nozzle
7	001068-45	O-ring, Size -118
8	014075-45	Spanner Bit, for #10 Screw
9	001660-45	Blue Index-CW
10	001019-45	Coupling Nut Washer
11	00BB	3/4" Inlet Flange Assembly
12	00LL	"LL" Flange Assembly



Product Specifications:

Kettle & Pot Sink Mixing Faucet w/ Big-Flo 12" Swing Nozzle,
Solid Brass Chrome Plated Lever Handles w/ VR Screws, Color
Coded Indexes & "00LL" Street Elbows

Drawn DHL	Checked KJG	Approved JHB
Scale: 1:4	Date: 05/11/09	