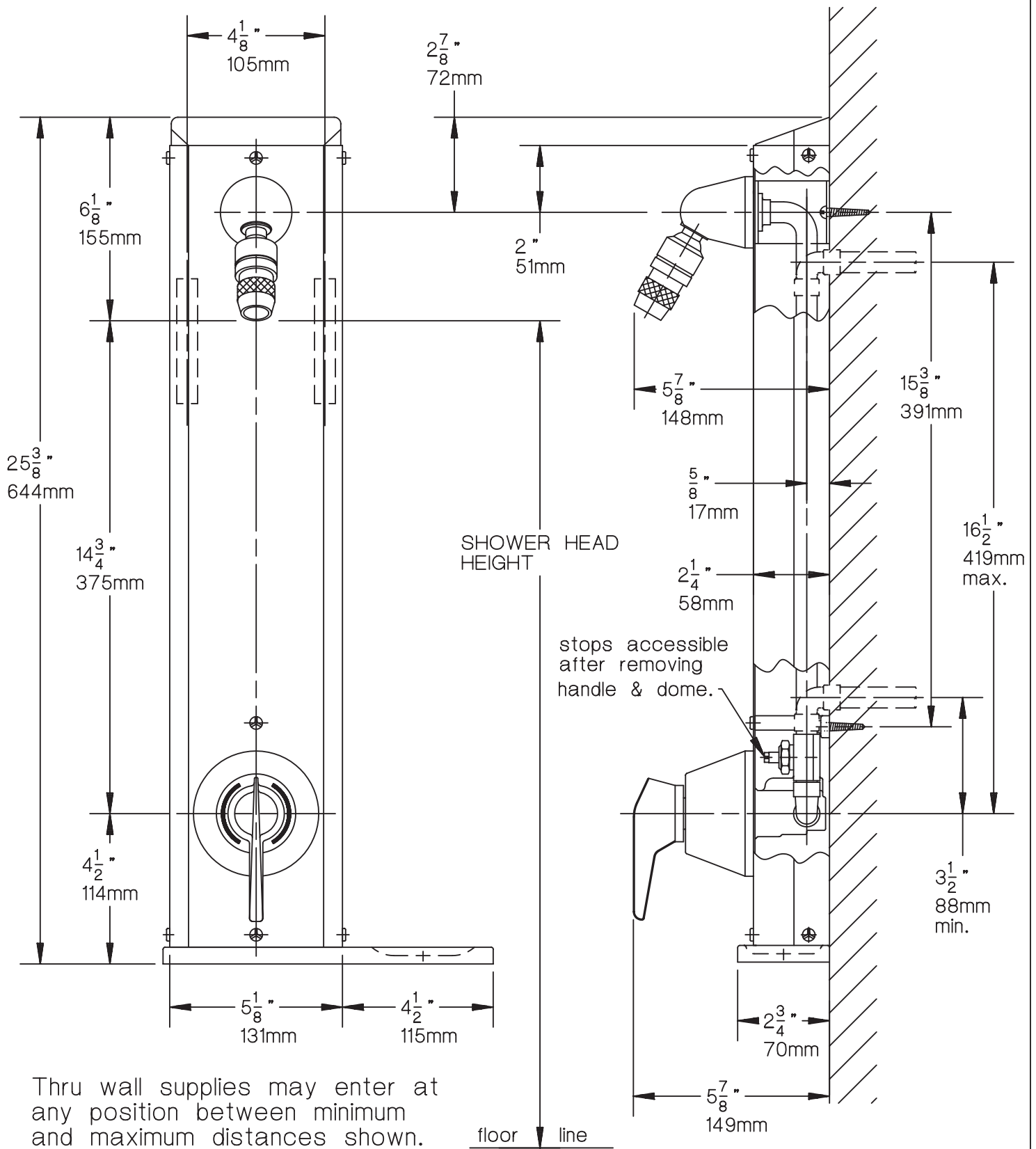


# #1-901S HYDAPIPE UNIT



Thru wall supplies may enter at any position between minimum and maximum distances shown.

© 1996-1998 Symmons Industries  
 31 Brooks Drive, Braintree, MA 02184-3804  
 Tel: 1-800-SYMMONS, (781) 848-2250  
 Fax: 1-800-961-9621, (781) 843-3849  
 Website: [www.symmons.com](http://www.symmons.com)

**SYMMONS®**  
 the smart choice™