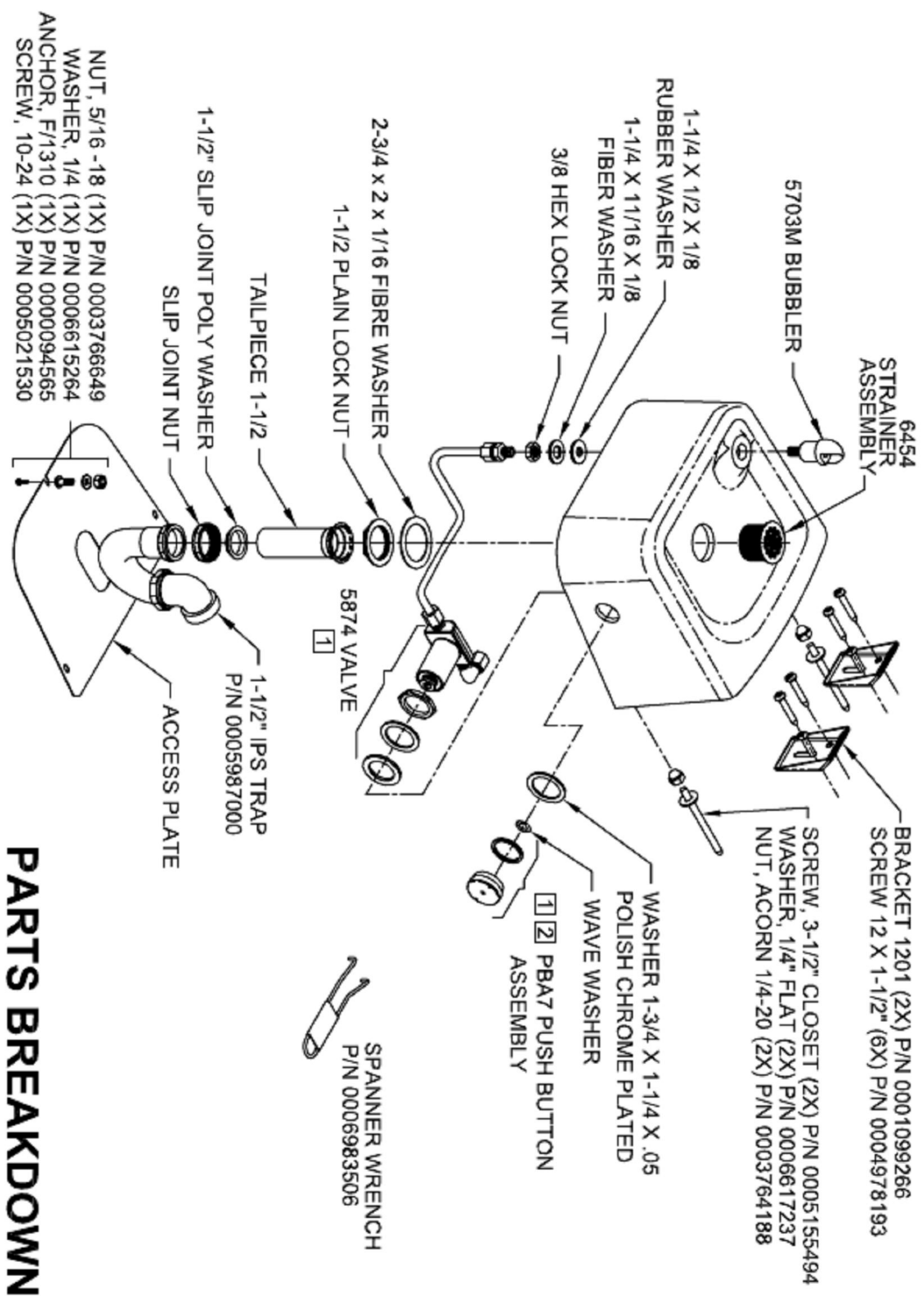


- NOTES:**
- 1 REFER TO 5874/WRK5874 OPERATION AND MAINTENANCE MANUAL FOR INSTALLATION INSTRUCTIONS.
  - 2 MUST APPLY 1 DOT OF LOCTITE 222MS THREADLOCKER ON FEMALE THREADS OF PUSH BUTTON. SEE 5874 OPERATION AND MAINTENANCE MANUAL (PAGE 5 OF 5) FOR PROPER APPLICATION PROCEDURE.



# PARTS BREAKDOWN

## Haws 1310