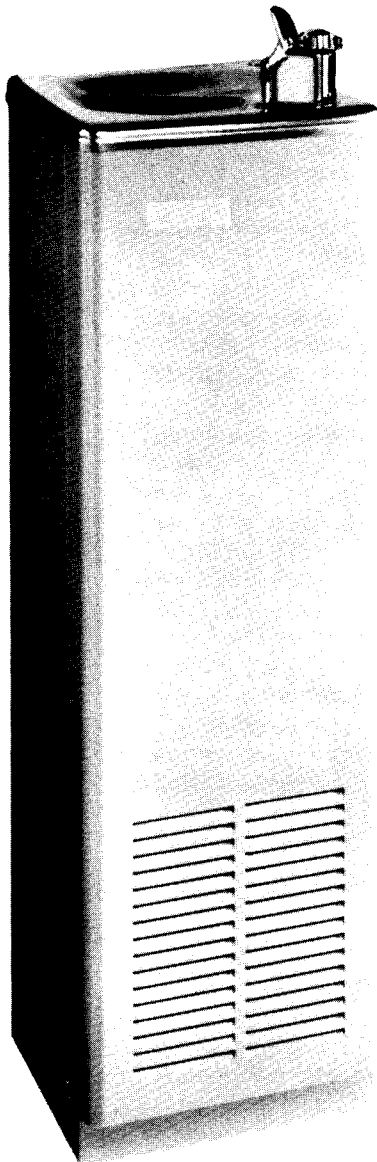


# SERVICE INSTRUCTIONS

...with Illustrated Parts Breakdown

## EBCO®

### WATER COOLER MODELS: CP3, CP3H-1, CP5, CP10



## DESCRIPTION

These models provide drinking water cooled to 50°F at 3, 5, and 10 gallons per hour. The CP3H also provides 45 cups per hour of 185°F hot water. These units are free-standing and require connections to supply water, electrical power, and waste drain.

The refrigeration system is hermetically sealed at manufacture and is generally considered to be non-field-serviceable. The air-cooled compressor pumps refrigerant through the fan-cooled condenser and a capillary tube (expansion valve) to the cooling tank evaporator. The evaporator is wrapped around the cooling tank for high efficiency.

The hot tank is vented to atmospheric pressure through the two-way action of the hot faucet, eliminating the need for pressure/temperature devices and allowing outgassing of water additives.

The electrical circuit includes automatic overload protection, adjustable hot and cold controls for water temperature regulation, and a switch to cut off the hot water system.

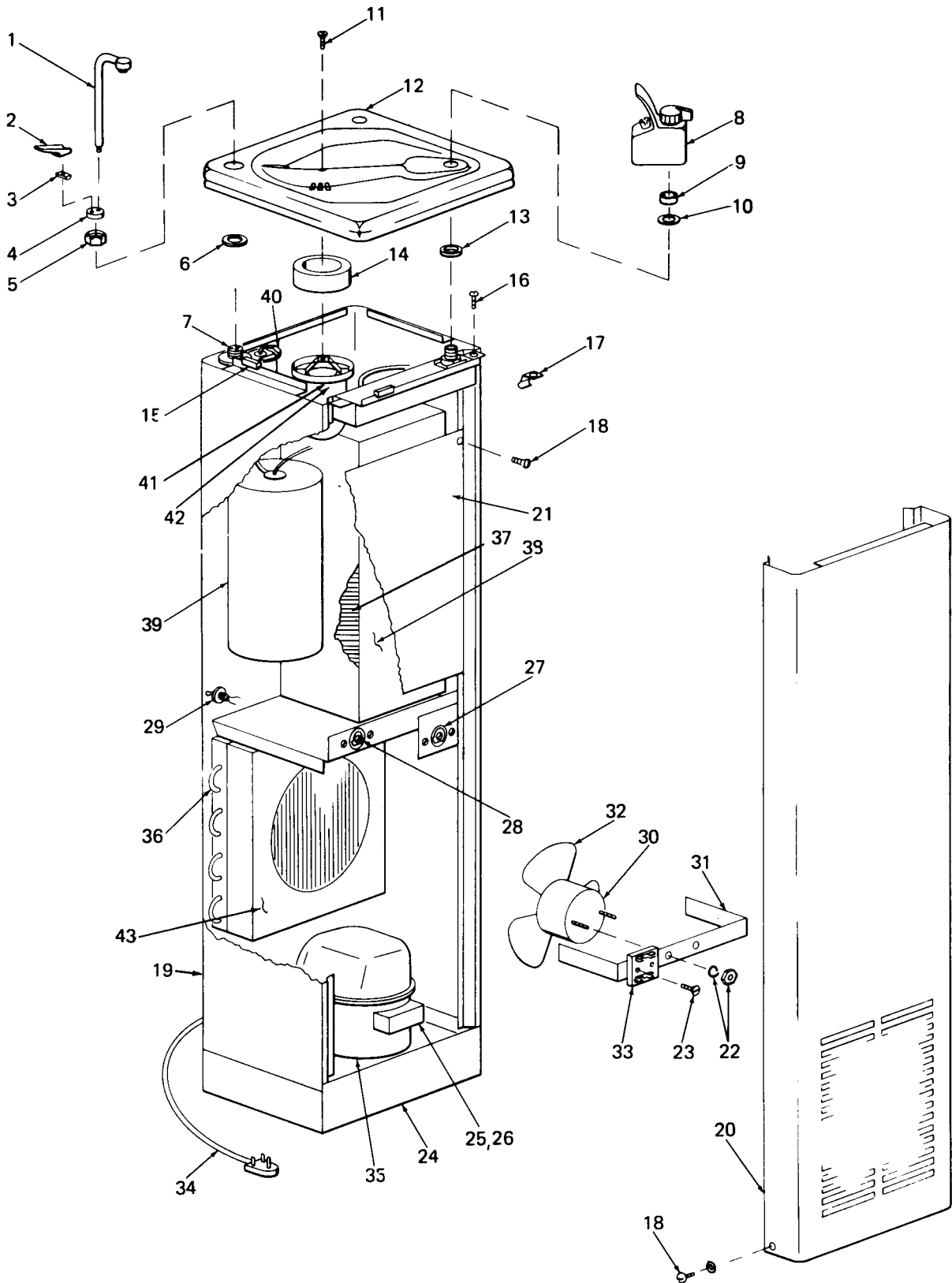
## SPECIFICATIONS

Voltage 115 VAC ± 10% / 1PH / 60 Hertz  
Size 40" H., 12" W., 12" D.  
Shipping Weight (Approx.) 80 LBS.

	CP3	CP3H	CP5	CP10
Cold Water Capacity GPH	3	3	5	10
Cold Water Compressor HP	1/8	1/8	1/5	1/5
Cold Water Compressor FLA	3.2	3.2	5	5
Refrigerant Charge R-12	4 oz	4 oz	65/8oz	65/8oz
Hot Water Capacity	—	45 C.	—	—
Hot Water Temp. Range	—	150-185	—	—

## COLD CONTROL

Full Cold Position Cut-Out 42°F ± 1°  
Full Cold Position Cut-In 48°F ± 1°  
Full Cold Position Differential 6°F ± 2°  
Full Warm Position Cut-In 55°F ± 2°  
Maximum Operating Temperature 90°F



**MODELS: CP3, CP3H-1, CP5, CP10**

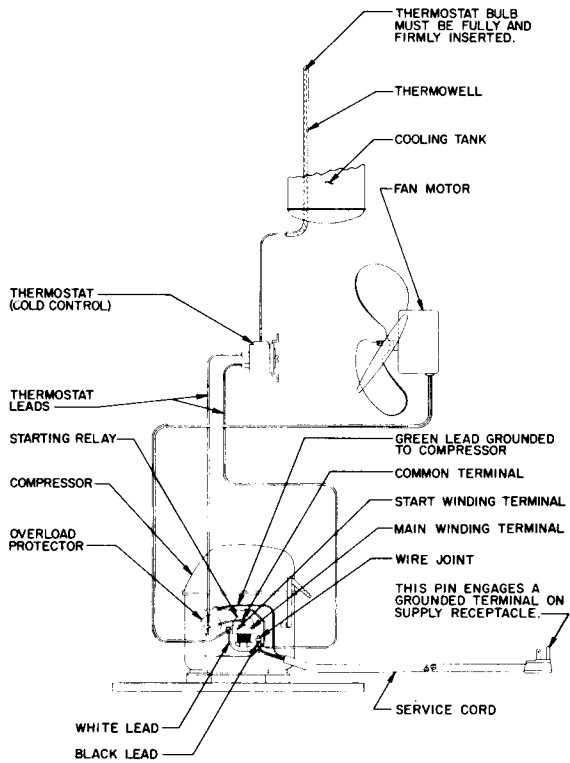
## REPLACEMENT PARTS LIST

FIG. NO.	DESCRIPTION	CP3 CP3-D*	CP3H CP3H-D*	CP5 CP5-D*	CP10 CP10-D*
<b>HOT VALVE</b>					
1	Gooseneck Assembly	—	017590	—	—
2	Handle	—	017925	—	—
3	Tee Nut	—	017926	—	—
4	Body Cap	—	017927	—	—
5	Nut	—	017583	—	—
6	Rubber Gasket	—	017582	—	—
7	Valve Body & Stem Assembly	—	021504	—	—
<b>TOP BASIN</b>					
8	12000 Bubbler Valve	026551-002	026551-002	026551-002	026551-002
9	Valve Body Gasket	008983	008983	008983	008983
10	Friction Washer	009281	009281	009281	009281
11	Top Screw	026655-002	026655-002	026655-002	026655-002
12	Top	024491	024491	024491	024491
13	Gasket	010545	010545	010545	010545
14	Waste Gasket	019131	019131	019131	019131
<b>CABINET</b>					
15	Top Pad	011641	011641	011641	011641
16	Screw	026630-011	026630-011	026630-011	026630-011
17	Speed Nut Clip	012253	012253	012253	012253
18	Screw	026630-015	026630-015	026630-015	026630-015
19	Cabinet Assembly	019687-001	017826-001	019687-001	019687-001
20	Front Panel	017528-001	017528-001	017528-001	017528-001
21	Fire Barrier	—	017982	—	—
22	Nut and Lock Washer	026824-015	026824-015	026824-015	026824-015
23	Screw	017541	017541	017541	017541
24	Base Assembly	021412-001	021412-001	021412-001	021412-001
<b>ELECTRICAL</b>					
25	Starting Relay	016941	016941	017978	017978
26	Overload	017560	017560	017977	017977
26A	†Overload and Relay (Not Shown)	022161	022161	022160	022160
27	Cold Control	027040-008	027040-008	027040-008	027040-008
28	Hot Control	—	027813-001	—	—
29	Hot Tank Toggle Switch	—	017630	—	—
30	Fan Motor Assembly	027354-008	027354-008	027354-008	027354-008
31	Fan Motor Bracket	017530	017530	017530	017530
32	Fan Blade	017820	017820	017820	017820
33	Terminal Base	023265	023265	023265	023265
34	Service Cord	026540-005	026540-003	026540-005	026540-005
34A	†Service Cord (Not Shown)	026540-016	026540-016	026540-016	026540-016
<b>REFRIGERATION</b>					
35	Compressor (Includes Items 25 and 26)	017562	017562	027256-002	027256-002
35A	†Compressor (Not Shown) (Includes Items 26A, 45 and 46)	026868-002	026868-002	027256-002	027256-002
36	Condenser	017531	017531	018252	018252
37	Cooling Tank Assembly	018458-001	018459-001	018245	018264-001
38	Cooling Tank Insulation (Two Required)	017599	017599	017599	017599
<b>MISCELLANEOUS</b>					
39	Hot Tank Assembly	—	023866	—	—
40	Check Valve	—	019690	—	—
41	Waste Assembly	016374	017845	016374	—
42	Precooler Assembly	—	—	—	018266
43	Fan Shroud	023931	023931	017821	017821
44	Hole Cover (Not Shown)	016994	—	016994	016994
45	†Compressor Cover (Not Shown)	022170	022170	022170	022170
46	†Compressor Terminal Block (Not Shown)	022169	022169	022169	022169

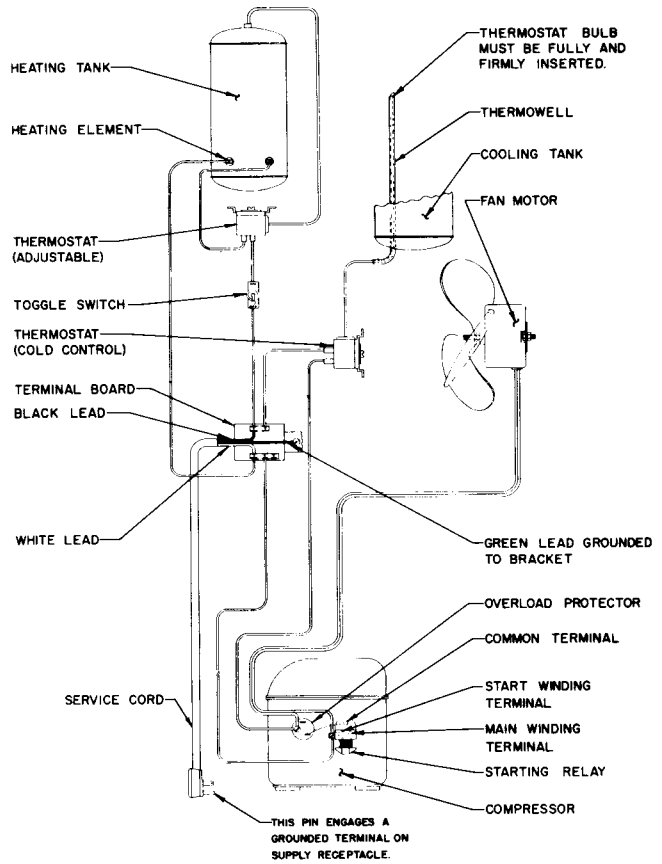
\*Designates Danfoss Compressor Models

†Used on Danfoss Compressor Models Only

# ELECTRICAL DIAGRAM



**MODELS: CP3, CP5, CP10**



**MODEL: CP3H**

**EBCO<sup>®</sup> MANUFACTURING COMPANY**

265 N. Hamilton Rd. • P.O. Box 13150 • Columbus, OH 43213-0150 • 614/861-1350 • Cable: EBCO • Fax: 614/861-5017