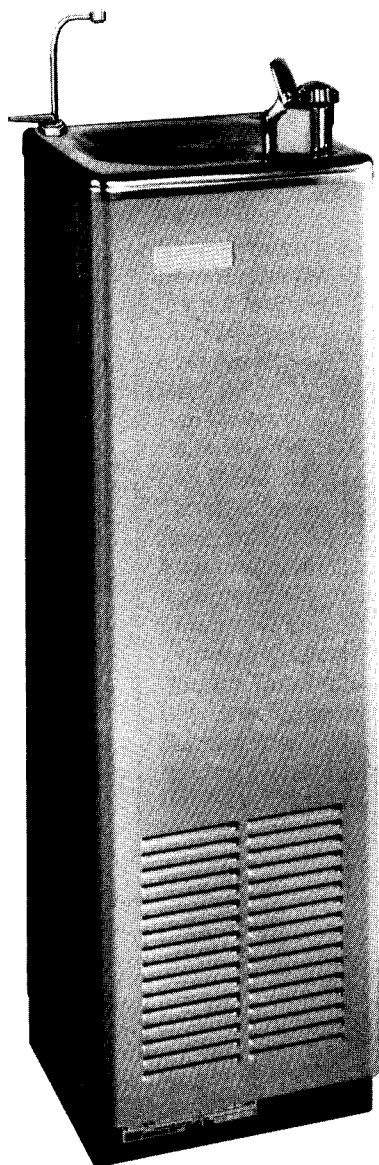


SERVICE INSTRUCTIONS

...with Illustrated Parts Breakdown

EBCO[®]

WATER COOLER MODELS: CP3H-2-P, CP3H-3-D, CP3-1-D



DESCRIPTION

These models provide drinking water cooled to 50°F at 3 gallons per hour. The CP3H also provides 45 cups per hour of 185°F hot water. These units are free-standing and require connections to supply water, electrical power, and waste drain.

The refrigeration system is hermetically sealed at manufacture and is generally considered to be non-field-serviceable. The air-cooled compressor pumps refrigerant through the fan-cooled condenser and a capillary tube (expansion valve) to the cooling tank evaporator. The evaporator is wrapped around the cooling tank for high efficiency.

The hot tank is vented to atmospheric pressure through the two-way action of the hot faucet, eliminating the need for pressure/temperature devices and allowing outgassing of water additives.

The electrical circuit includes automatic overload protection, adjustable hot and cold controls for water temperature regulation, and a switch to cut off the hot water system.

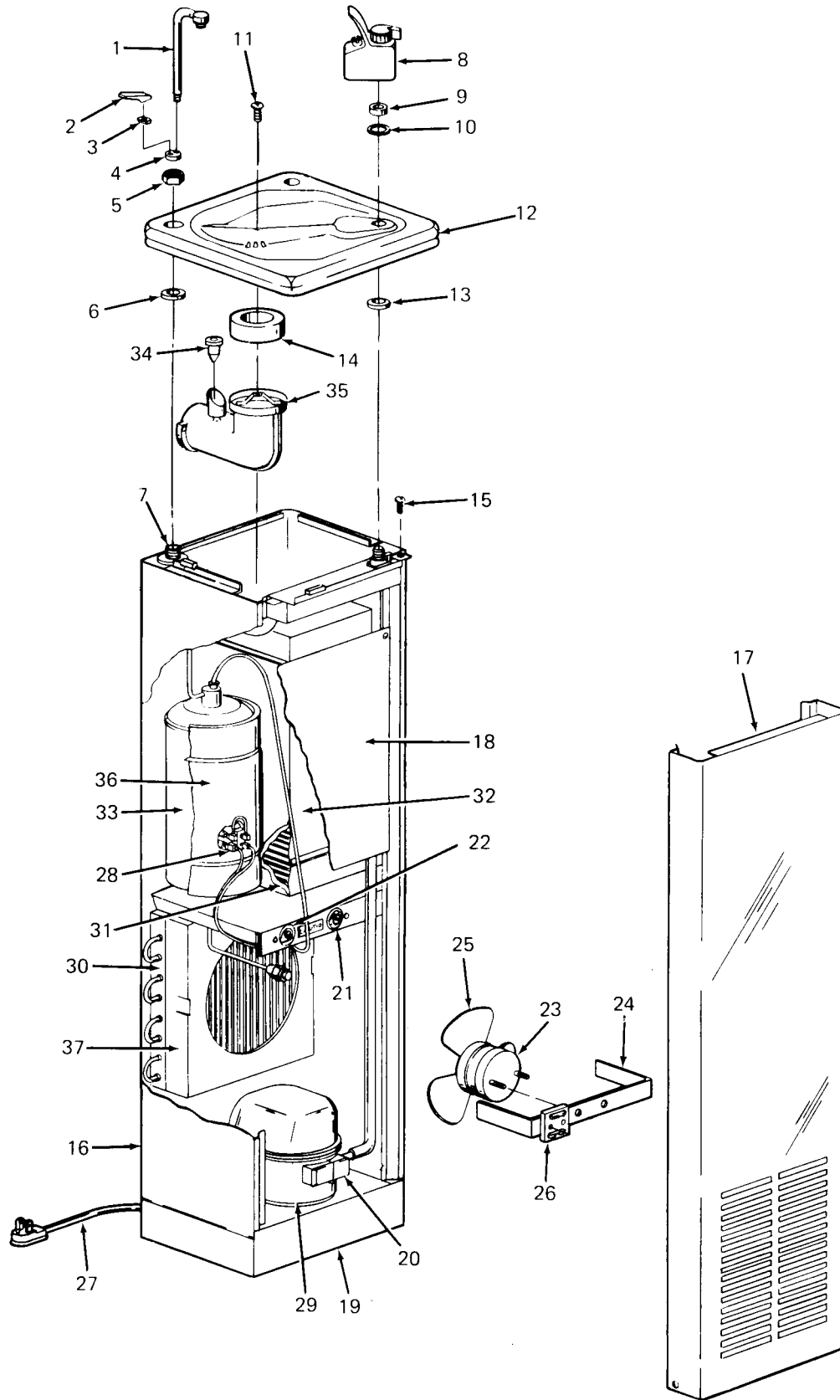
SPECIFICATIONS

Voltage	115 VAC ±10%/1PH/60 Hertz		
Size (Approx)	40" H., 12" W., 12" D.		
Shipping Weight (Approx)	72 LBS.		

	Models	CP3H-2-P	CP3H-3-D	CP3-1-D
Cold Water Capacity (GPH)		3	3	3
Compressor (HP)		1/8	1/12	1/12
Compressor Amps (Full Load)		7.8	6.7	2.4
Refrigerant		R-12	R-12	R-12
Refrigerant Charge		3-3/8 OZ.	3-3/8 OZ.	3-3/8 OZ.

*A.R.I. Rating: Room Temperature 90°F; Supply Water Temperature 80°F; Drinking Water Temperature 50°F.

Specifications subject to change without notice.



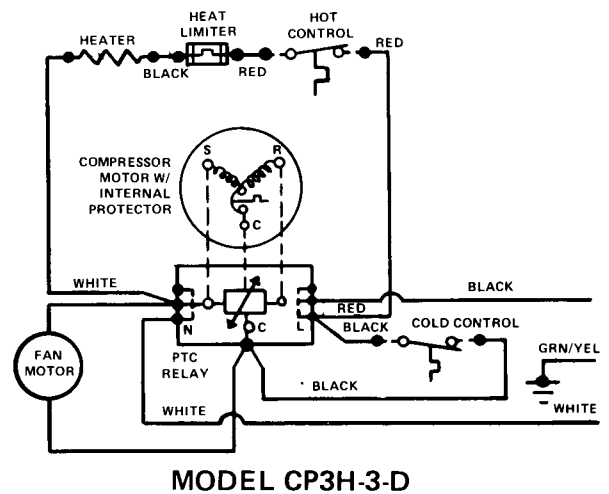
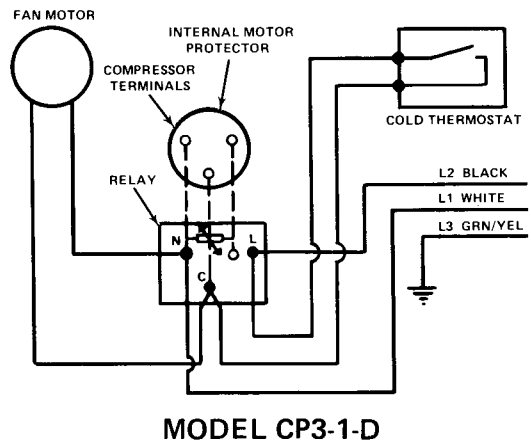
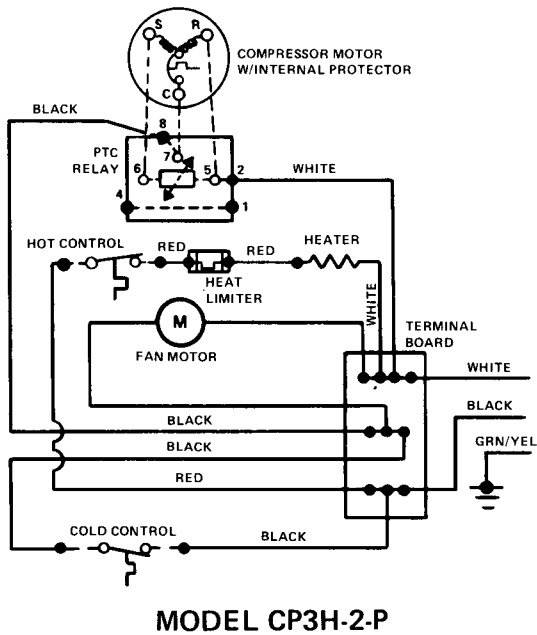
REPLACEMENT PARTS LIST

ITEM NO.	DESCRIPTION	CP3H-2-P	CP3H-3-D	CP3-1-D
1	Gooseneck	017590	017590	---
2	Handle	017925	017925	---
3	Tee Nut	017926	017926	---
4	Body Cap	017927	017927	---
5	Nut	017583	017583	---
6	Rubber Gasket	017582	017582	---
7	Valve Body Assembly	026281	026281	---
8	12000 Bubbler Valve	026551-002	026551-002	026551-002
9	Valve Body Gasket	008983	008983	008983
10	Friction Washer	009281	009281	009281
11	Top Screw	026655-002	026655-002	026655-002
12	Top	024491	024491	024491
13	Gasket	010545	010545	010545
14	Waste Gasket	019131	019131	019131
15	Bubbler Spud	016997	016997	016997
16	Cabinet Assembly – Tan	019687-001	019687-001	019687-001
	Cabinet Assembly – Olive Beige	024465-001	024465-001	024465-001
	Cabinet Assembly – Stainless Steel	019687-003	019687-003	019687-003
17	Front Panel – Tan	017528-001	017528-001	017528-001
	Front Panel – Olive Beige	024464	024464	024464
	Front Panel – Stainless Steel	017528-002	017528-002	017528-002
18	Fire Barrier	017982	017982	017982
19	Base Assembly – Tan	021412-001	021412-001	021412-001
	Base Assembly – Olive Beige	021412-003	021412-003	021412-003
	Base Assembly – Stainless Steel	021412-005	021412-005	021412-005
20	Starting Relay	027709-001	026867	026867
21	Cold Control	027040-008	027040-008	027040-008
22	Hot Control	027813-001	027813-001	027813-001
23	Fan Motor	027354-008	027354-008	027354-008
24	Fan Motor Bracket	017530	017530	017530
25	Fan Blade	022977	022977	022977
26	Terminal Base	023265	---	---
27	Service Cord	026540-003	026540-003	026540-003
28	Heat Limiter	024373-002	024373-002	024373-002
29	Compressor (Includes Item 20)	027473-001	026868-002	026868-002
30	Condenser	017531	017531	017531
31	Insulated Cooling Tank Assembly	024756-002	024756-002	024756-001
32	Cooling Tank Insulation (2 Required)	017599	017599	017599
33	Hot Tank Assembly	027207-002	027207-002	---
34	Duckbill Check Valve	026274	026274	---
35	Insulated Waste Assembly	026308	026308	024455
36	Hot Tank Insulation	025792	025792	---
37	Fan Shroud	023931	023931	023931
NOT SHOWN	Heat Exchanger	017833	017833	017833
	Hole Cover	---	---	016994

SERVICE CHECK CHART

TROUBLE	PROBABLE CAUSE	REMEDY
Unit not running	No electrical power Defective cold control Defective relay	Check power source Check that cold control is not in off position Replace Replace
Unit running but not cooling	Refrigerant leak or low refrigerant	Add refrigerant
Unit running continuously	Defective cold control Low refrigerant	Replace Add refrigerant

ELECTRICAL DIAGRAM



EBCO® MANUFACTURING COMPANY

265 N. Hamilton Rd. • P.O. Box 13150 • Columbus, OH 43213-0150 • 614/861-1350 • Cable: EBCO • Fax: 614/861-5017