

CHICAGO FAUCETS
a Geberit company

2100 South Clearwater Drive
Des Plaines, IL 60018
Phone: 847-803-5000
Fax: 847-803-5454
www.chicagofaucets.com

REPAIR PARTS

FITTING NO.

997-CP

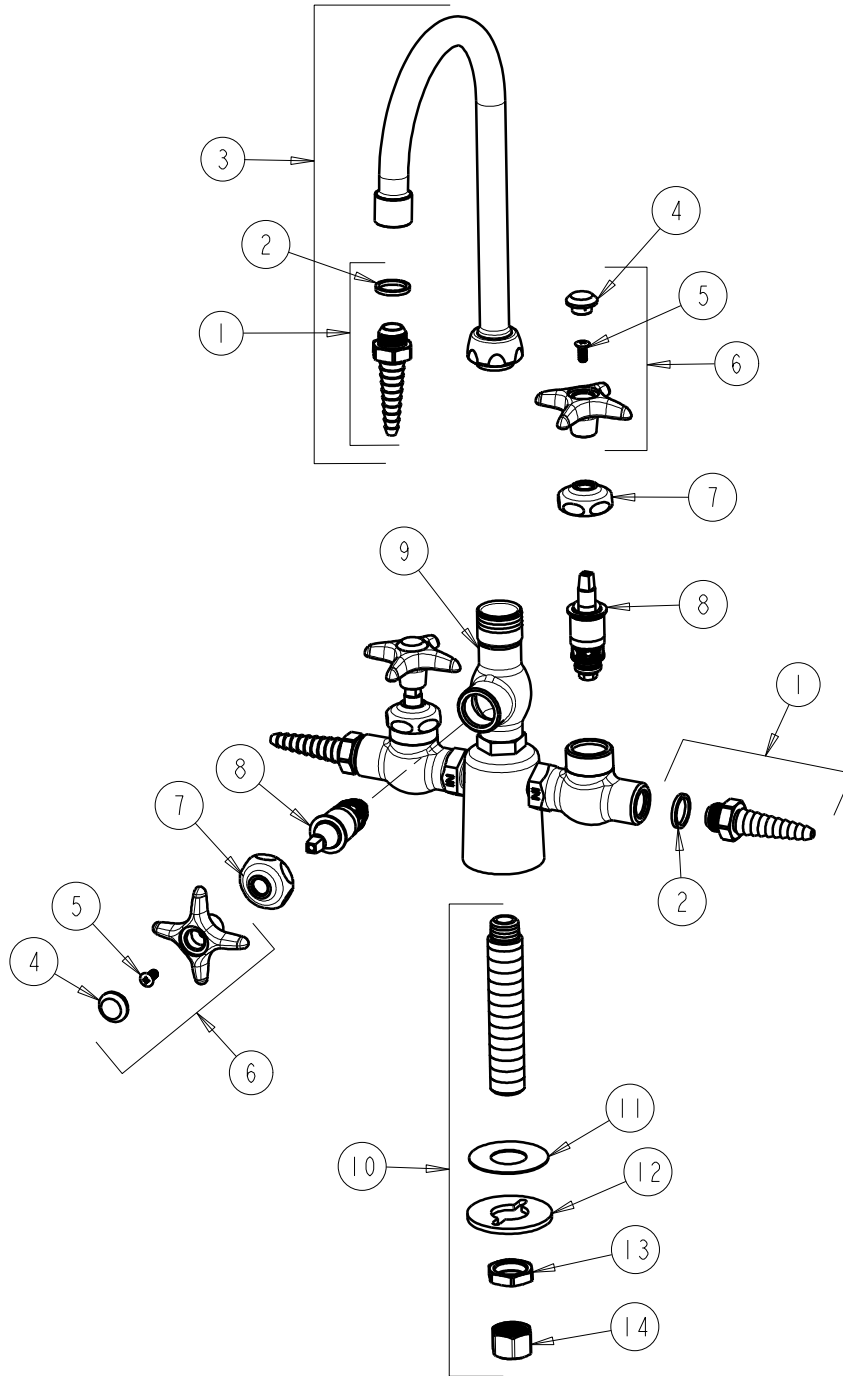
SUBMITTED MODEL NO.

ITEM NO.

BY: JAR DATE: 10-30-07

CHK: *[Signature]* REV: 06-02-09

FOR TECHNICAL ASSISTANCE
1-800-TEC-TRUE (1-800-832-8783)



ITEM	PART NO.	DESCRIPTION	ITEM	PART NO.	DESCRIPTION
1	E7JKCP	SERRATED HOSE NOZZLE	9	—	VALVE (NOT SOLD SEPARATELY)
2	229-003JKNF	WASHER	10	748-003JKRBF	SHANK ASSEMBLY
3	GN2BE7JKCP	GN SPOUT B TYPE END	11	52-007JKNF	WASHER, RUBBER
4	216-178JKNF	BUTTON 'CW'	12	807-112JKNF	WASHER
5	420-010JKRCF	SCREW, 10-32 UNC PH 1/2	13	49-004JKRBF	LOCKNUT
6	204-CWJKCP	HANDLE ASSEMBLY	14	49-005JKRBF	COUPLING NUT
7	1-214JKCP	CAP			
8	217-XTLHJKNF	CARTRIDGE, SLO-COMPRESSION			