

# PARTS LIST

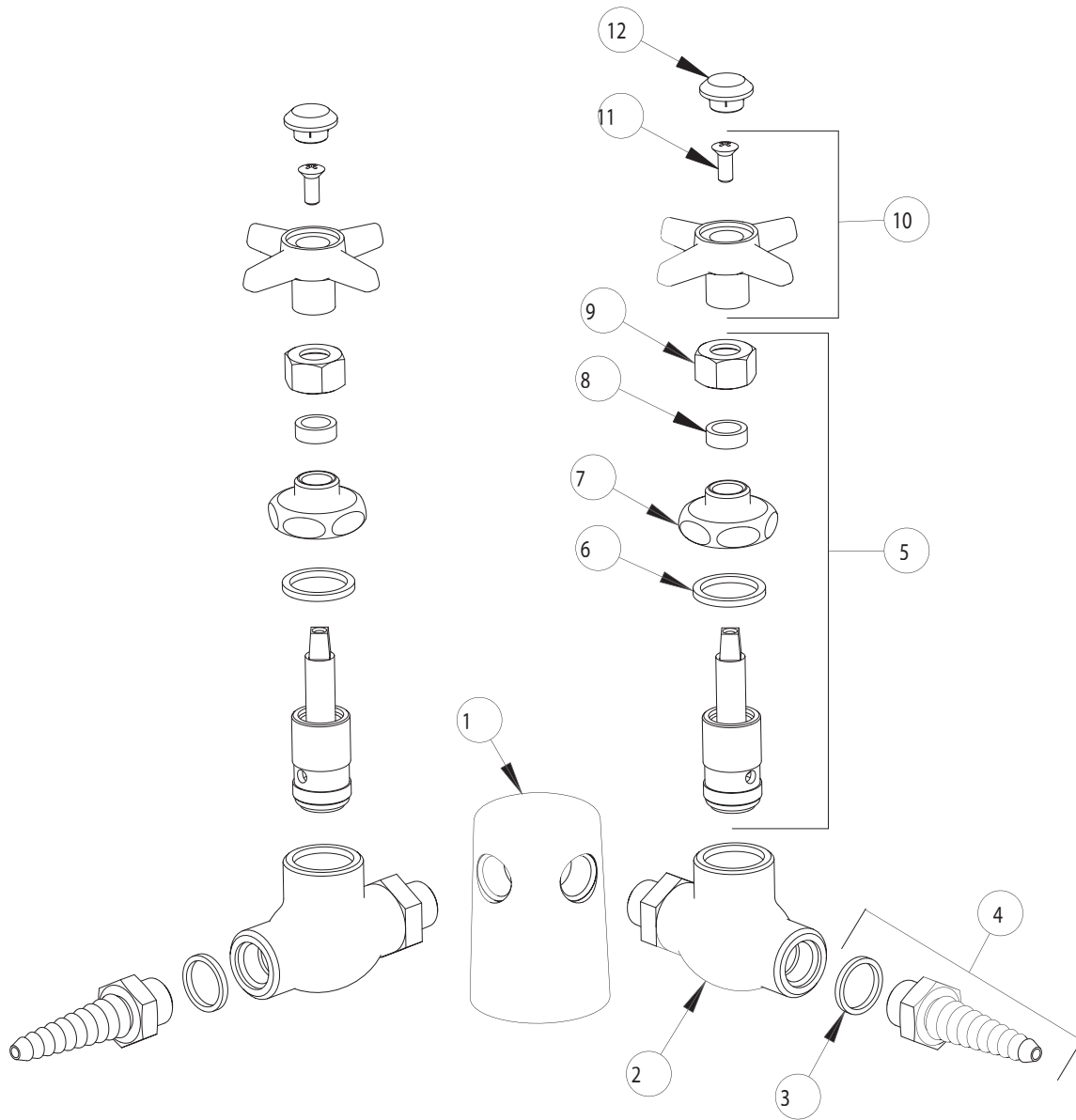
BY: JAR  
CHK'D:



FINISH:  
DATE:

AS SPECIFIED  
2-27-02

982-937CHAGV



ITEM NO.	PART NO.	DESCRIPTION	ITEM NO.	PART NO.	DESCRIPTION
1	982	TURRET, TWO OUTLETS	7	937-018	CAP NUT
2	-----	VALVE BODY (NOT SOLD SEPARATELY)	8	244-217	PACKING
3	229-003	WASHER	9	937-010	NUT
4	E7	LAB NOZZLE OUTLET	10	204-LESS216-28	4-ARM HANDLE ASSEMBLY
5	962X	NEEDLE VALVE UNIT	11	420-010	SCREW
6	1-043	GASKET	12	216-PP	PRE-PACK AIR, GAS, VAC