

PARTS LIST

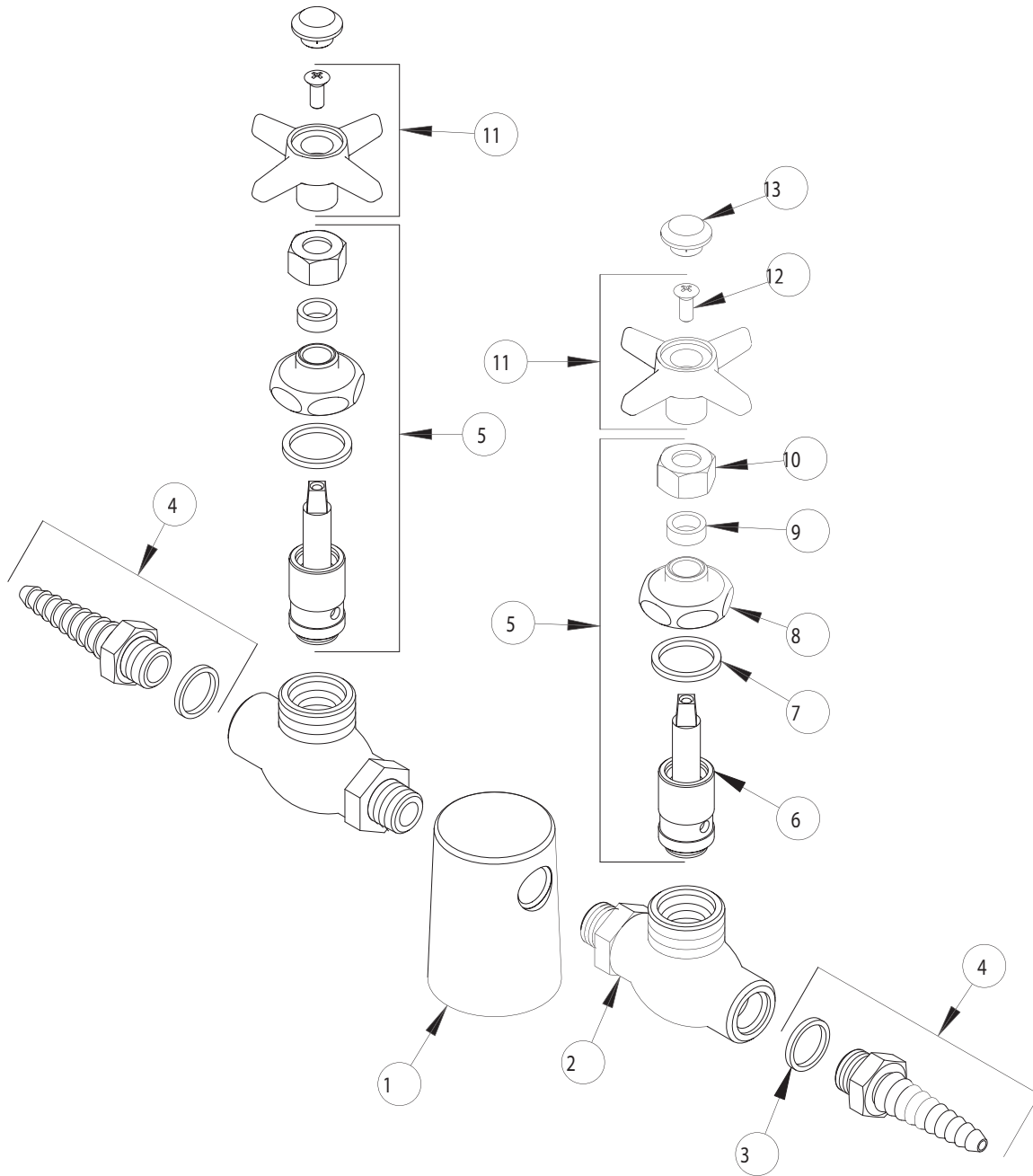
BY: SID
CHK'D:



FINISH:
DATE:

AS SPECIFIED
10-31-01

981-937CHAGV



ITEM NO.	PART NO.	DESCRIPTION	ITEM NO.	PART NO.	DESCRIPTION
1	981	TURRET, TWO OUTLETS	8	937-018	CAP NUT
2	-----	VALVE BODY (NOT SOLD SEPARATELY)	9	244-217	PACKING
3	229-003	WASHER	10	937-010	NUT
4	E7	LAB NOZZLE OUTLET	11	204-LESS216-28	4-ARM HANDLE ASSEMBLY
5	962X	NEEDLE VALVE UNIT	12	420-010	SCREW
6	-----	UNIT ASSEMBLY (NOT SOLD SEPARATELY)	13	216-PP	PRE-PACK AIR, GAS, VAC
7	1-043	GASKET			