

CHICAGO FAUCETS
a Geberit company

2100 South Clearwater Drive
Des Plaines, IL 60018
Phone: 847-803-5000
Fax: 847-803-5454
www.chicagofaucets.com

REPAIR PARTS

BY: JAR DATE: 05-23-02
CHK: REV: 08-01-08

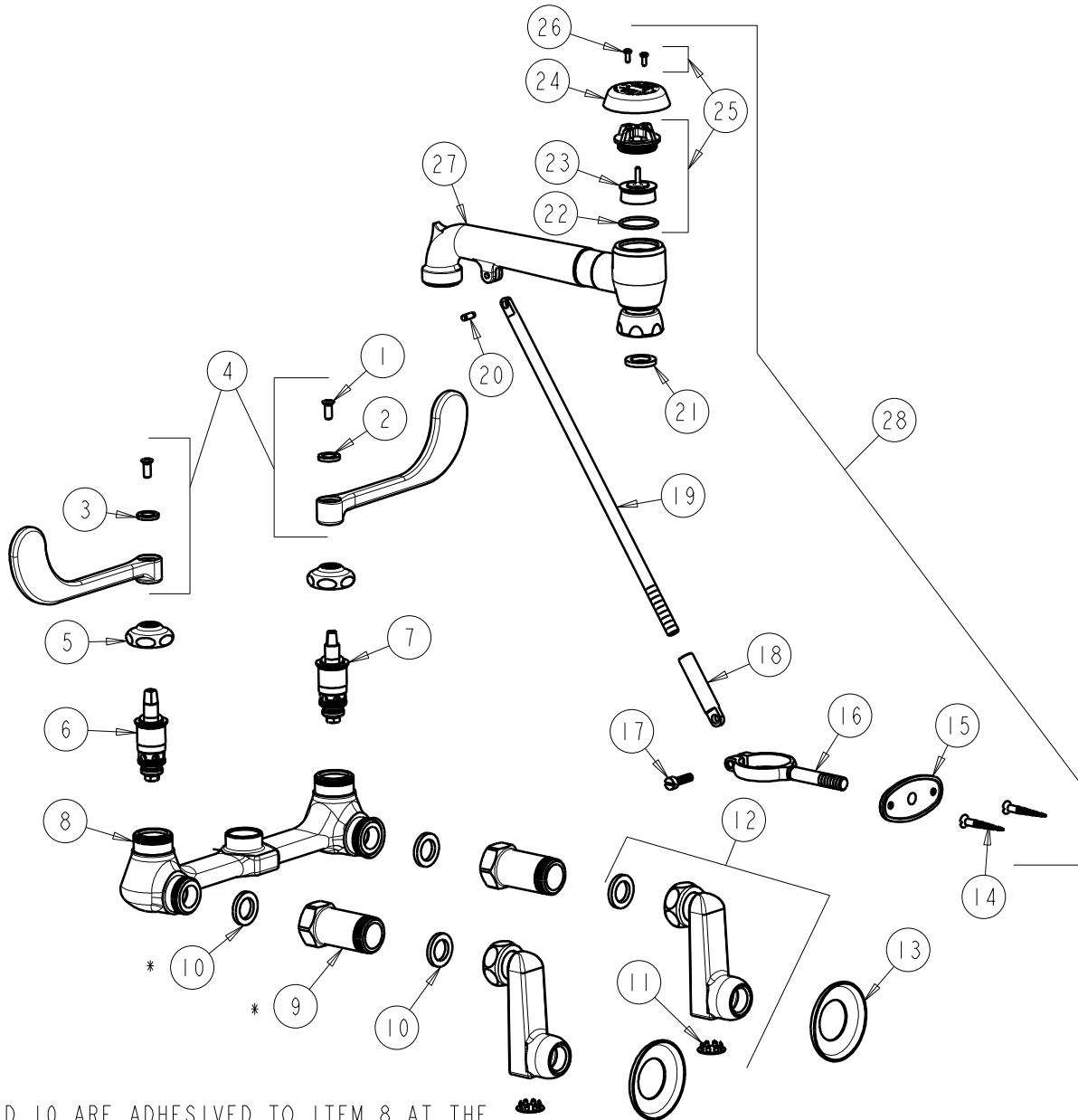
FITTING NO.

814-VBCP

SUBMITTED MODEL NO.

ITEM NO.

FOR TECHNICAL ASSISTANCE
1-800-TEC-TRUE (1-800-832-8783)



* NOTE:
ITEMS 9 AND 10 ARE ADHESIVED TO ITEM 8 AT THE
FACTORY BUT ARE AVAILABLE AS REPLACEMENT PARTS.

| ITEM | PART NO. | DESCRIPTION | ITEM | PART NO. | DESCRIPTION |
|------|--------------|-----------------------------------|------|--------------|------------------------------|
| 1 | 420-010JKRCF | SCREW, 10-32 UNC PH 1/2 | 15 | 173-109JKCP | FLANGE |
| 2 | 633-023JKNF | INDEX BUTTON (RED) | 16 | 173-010JKCP | PIPE SUPPORT |
| 3 | 633-123JKNF | INDEX BUTTON (BLUE) | 17 | 173-012JKCP | SCREW |
| 4 | 319-PRJKCP | WRISTBLADE HANDLE (PAIR) | 18 | 173-026JKCP | SLEEVE, SPOUT |
| 5 | 1-214JKCP | CAP | 19 | 175-002JKCP | BRACE ROD 10-7/8" |
| 6 | 1-099XTJKNF | QUATURN UNIT (RH) | 20 | 50-007JKBNF | PIN |
| 7 | 1-100XTJKNF | QUATURN UNIT (LH) | 21 | 340-004JKNF | CELCON WASHER |
| 8 | — | VALVE BODY (NOT SOLD SEPARATELY) | 22 | 80-007JKNF | O-RING |
| 9 | EX2JKCP | EXTENSION | 23 | 892-032KJKNF | VACUUM BREAKER DISC ASSEMBLY |
| 10 | 1-011JKNF | WASHER, .97 X .62 X .12 | 24 | 892-154JKCP | VACUUM BREAKER COVER |
| 11 | 1-144JKCP | BUTTON | 25 | 892-202KJKNF | VACUUM BREAKER REPAIR KIT |
| 12 | RJKCP | SUPPLY ARM WITH BUILT-IN SHUT-OFF | 26 | 333-321JKNF | VACUUM BREAKER TORX SCREW |
| 13 | 1-055JKCP | FLANGE | 27 | — | SPOUT ASSEMBLY |
| 14 | 173-006JKCP | FLAT HEAD WOOD SCREW (1) | 28 | 814-SVBJKCP | CAST SPOUT ASSEMBLY |