

**CHICAGO FAUCETS**  
a Geberit company

2100 South Clearwater Drive  
Des Plaines, IL 60018  
Phone: 847-803-5000  
Fax: 847-803-5454  
www.chicagofaucets.com

# REPAIR PARTS

BY: JAR DATE: 11-11-03  
CHK: *JAR* REV: 07-19-11

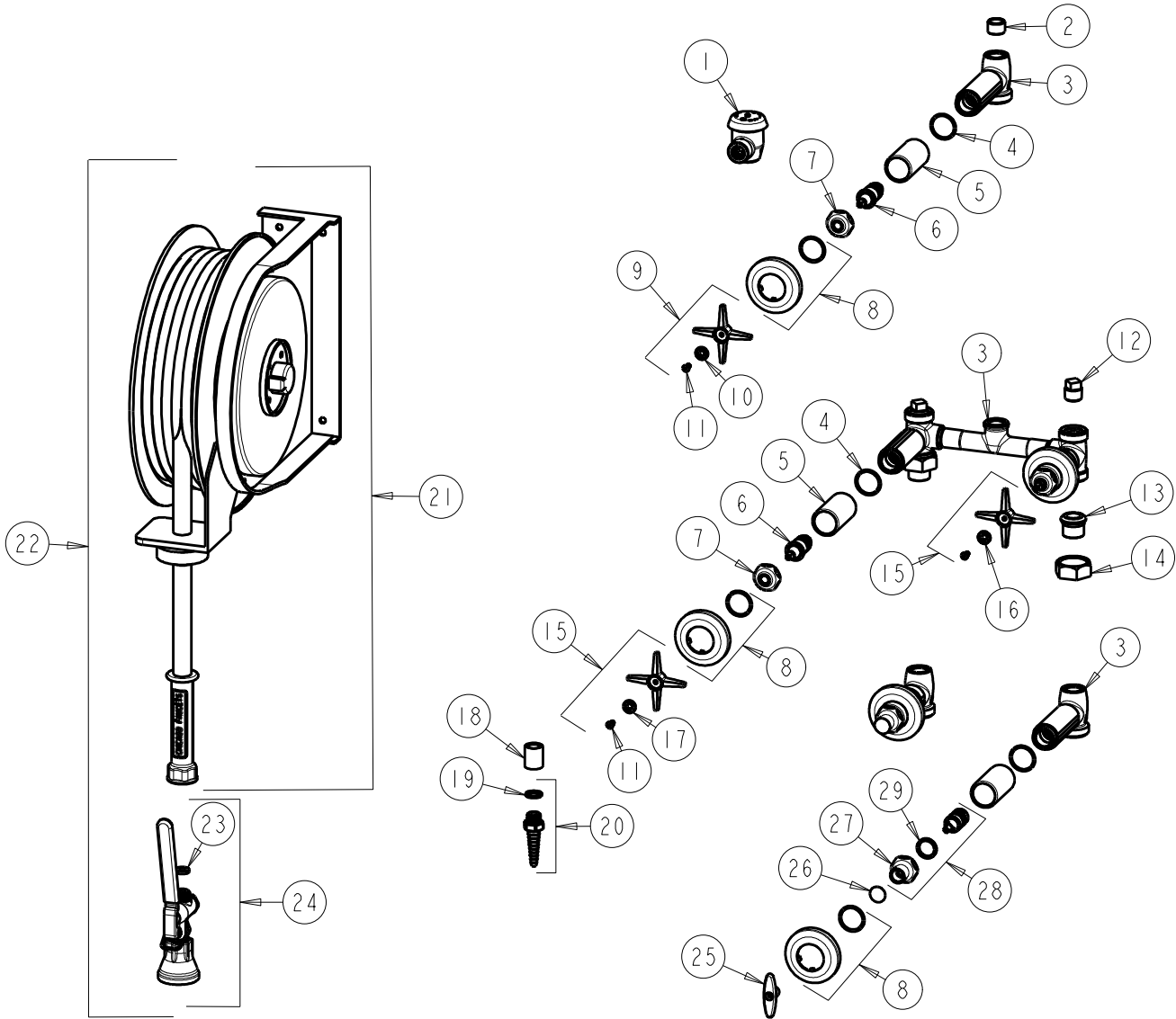
FITTING NO.

**536-NF**

SUBMITTED MODEL NO.

ITEM NO.

**FOR TECHNICAL ASSISTANCE**  
1-800-TEC-TRUE (1-800-832-8783)



ITEM	PART NO.	DESCRIPTION	ITEM	PART NO.	DESCRIPTION
1	893-CP	FOR PARTS SEE 893	16	633-123JKNF	INDEX BUTTON (BLUE)
2	170-024JKRCF	BUSHING	17	633-023JKNF	INDEX BUTTON (RED)
3	—	VALVE BODY (NOT SOLD SEPARATELY)	18	777-027JKCP	COUPLING
4	5235-107JKNF	O-RING	19	229-003JKNF	WASHER
5	5235-106JKCP	SLEEVE	20	E7FCJKCP	NOZZLE
6	217-XTLHJKNF	SLO-COMPRESSION UNIT (LH)	21	537-LESS80NF	HOSE REEL, RETRACT
7	1-214JKCP	CAP	22	537-NF	HOSE REEL
8	633-201JKCP	FLANGE & O-RING	23	919-243JKNF	GASKET, .685 X .375 X .125
9	633-PLJKCP	4-ARM CROSS HANDLE	24	90-HABCP	SPRAY, FOR PARTS SEE 90-HABCP
10	633-223JKNF	INDEX BUTTON (WHITE)	25	293-006JKRCF	TEE HANDLE & SCREW
11	420-010JKRCF	SCREW, 10-32 UNC PH 1/2	26	1-144JKCP	BUTTON
12	234-032JKRCF	1/2 NPT PLUG	27	1-246JKCP	NUT, CAP LOOSE KEY 1-1/8-18 UNEF
13	177-003JKCP	UNION TAILPIECE	28	376-CXJKNF	SLO-COMP INTEGRAL CHECK UNIT
14	177-002JKCP	UNION NUT	29	1-043JKNF	GASKET, CAP 1 X .80 X .09
15	633-PRJKCP	4-ARM HANDLE ASSEMBLY			