

CHICAGO FAUCETS
a Geberit company

2100 South Clearwater Drive
Des Plaines, IL 60018
Phone: 847-803-5000
Fax: 847-803-5454
www.chicagofaucets.com

REPAIR PARTS

FITTING NO.

350-E35-317XKABCP

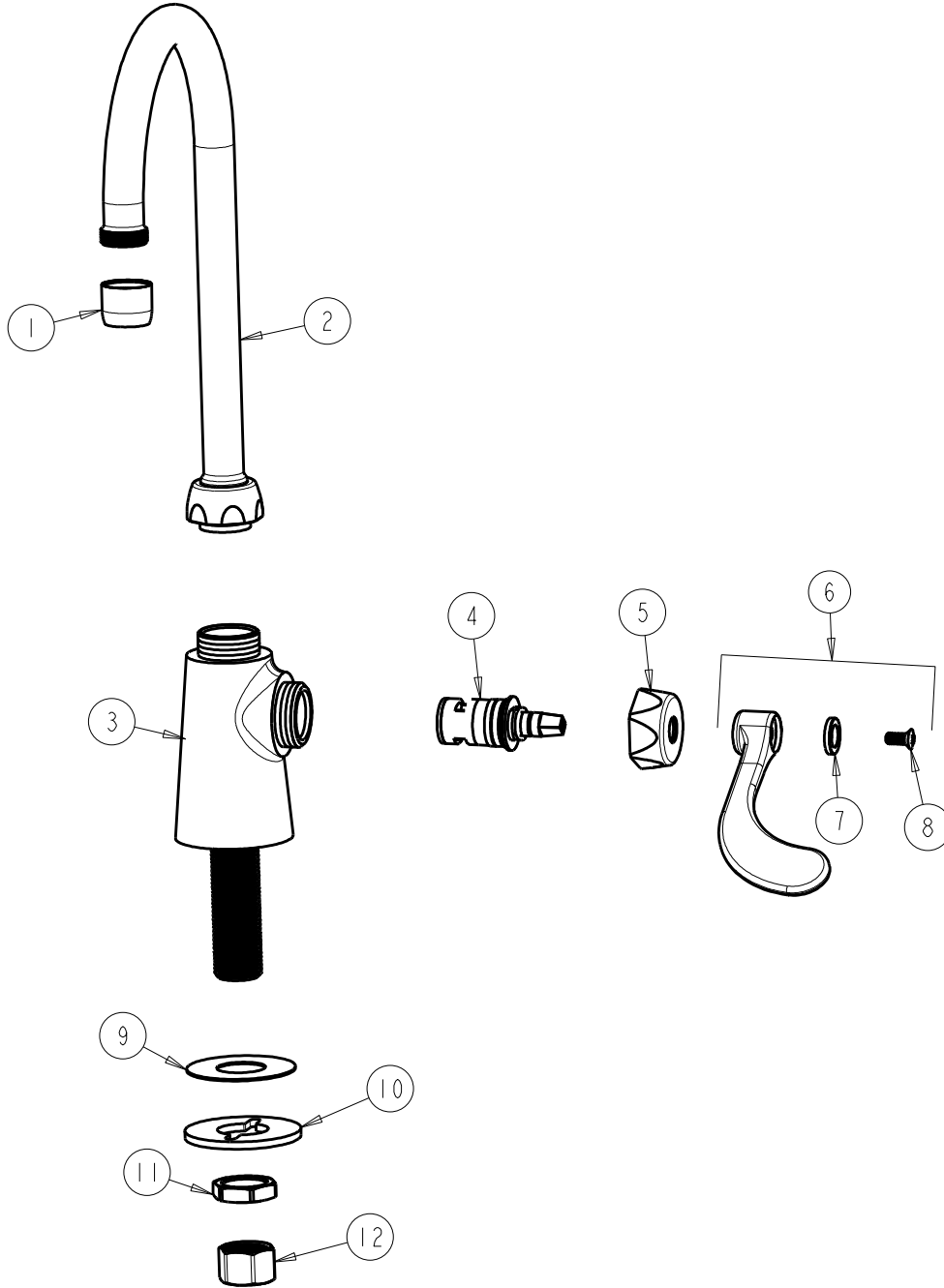
SUBMITTED MODEL NO.

BY: JAR DATE: 05-02-12

CHK: *JR* REV:

ITEM NO.

FOR TECHNICAL ASSISTANCE
1-800-TEC-TRUE (1-800-832-8783)



ITEM	PART NO.	DESCRIPTION	ITEM	PART NO.	DESCRIPTION
1	E35JKCP	SOFTFLO AERATOR 1.5 GPM	7	633-123JKNF	INDEX BUTTON (BLUE)
2	GN2AJKABCP	GN SPOUT PLAIN END	8	420-010JKRCF	SCREW, 10-32 UNC PH 1/2
3	---	VALVE BODY (NOT SOLD SEPARATELY)	9	52-007JKNF	WASHER, RUBBER
4	1-099XKJKABNF	RH CERAMIC CARTRIDGE 1/4	10	807-112JKNF	WASHER
5	444-005JKCP	CAP	11	49-004JKRBF	LOCKNUT
6	317-COLDJKCP	WRISTBLADE HANDLE	12	49-005JKRBF	COUPLING NUT