



a Geberit company

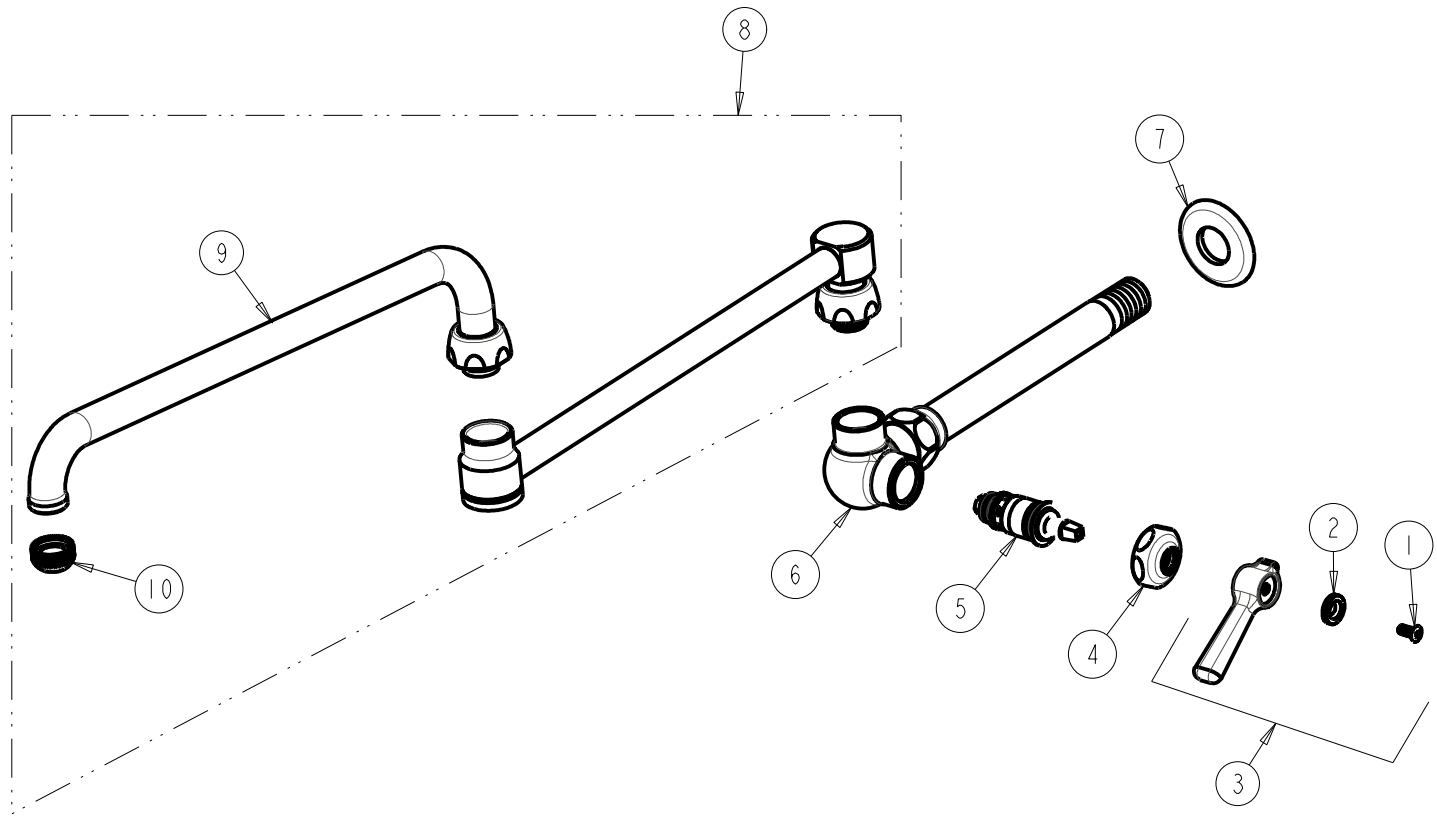
2100 South Clearwater Drive  
Des Plaines, IL 60018  
Phone: 847-803-5000  
Fax: 847-803-5454  
www.chicagofaucets.com

**FOR TECHNICAL ASSISTANCE**  
1-800-TEC-TRUE (1-800-832-8783)

# REPAIR PARTS

BY: JAR    DATE: 01-09-13  
CHK: *JAR*    REV:

FITTING NO.
334-DJ26ABCP
SUBMITTED MODEL NO.
ITEM NO.



ITEM	PART NO.	DESCRIPTION
1	420-010JKRCF	SCREW, 10-32 UNC PH 1/2
2	633-123JKNF	INDEX BUTTON (BLUE)
3	369-COLDJKCP	LEVER HANDLE ASSEMBLY
4	1-214JKCP	CAP
5	1-099XTJKABNF	QUATURN CARTRIDGE (RH)
6	-----	WALL MNTD WOK FILLER ASSEMBLY
7	722-006JKCP	FLANGE
8	DJ26JKABCP	SPOUT
9	L15LESE3JKCP	SPOUT
10	E1JKABRCF	QUIXTOP OUTLET