



a Geberit company

2100 South Clearwater Drive  
Des Plaines, IL 60018  
Phone: 847-803-5000  
Fax: 847-803-5454  
www.chicagofaucets.com

# REPAIR PARTS

BY: JAR    DATE: 11-13-12  
CHK: *[Signature]*    REV:

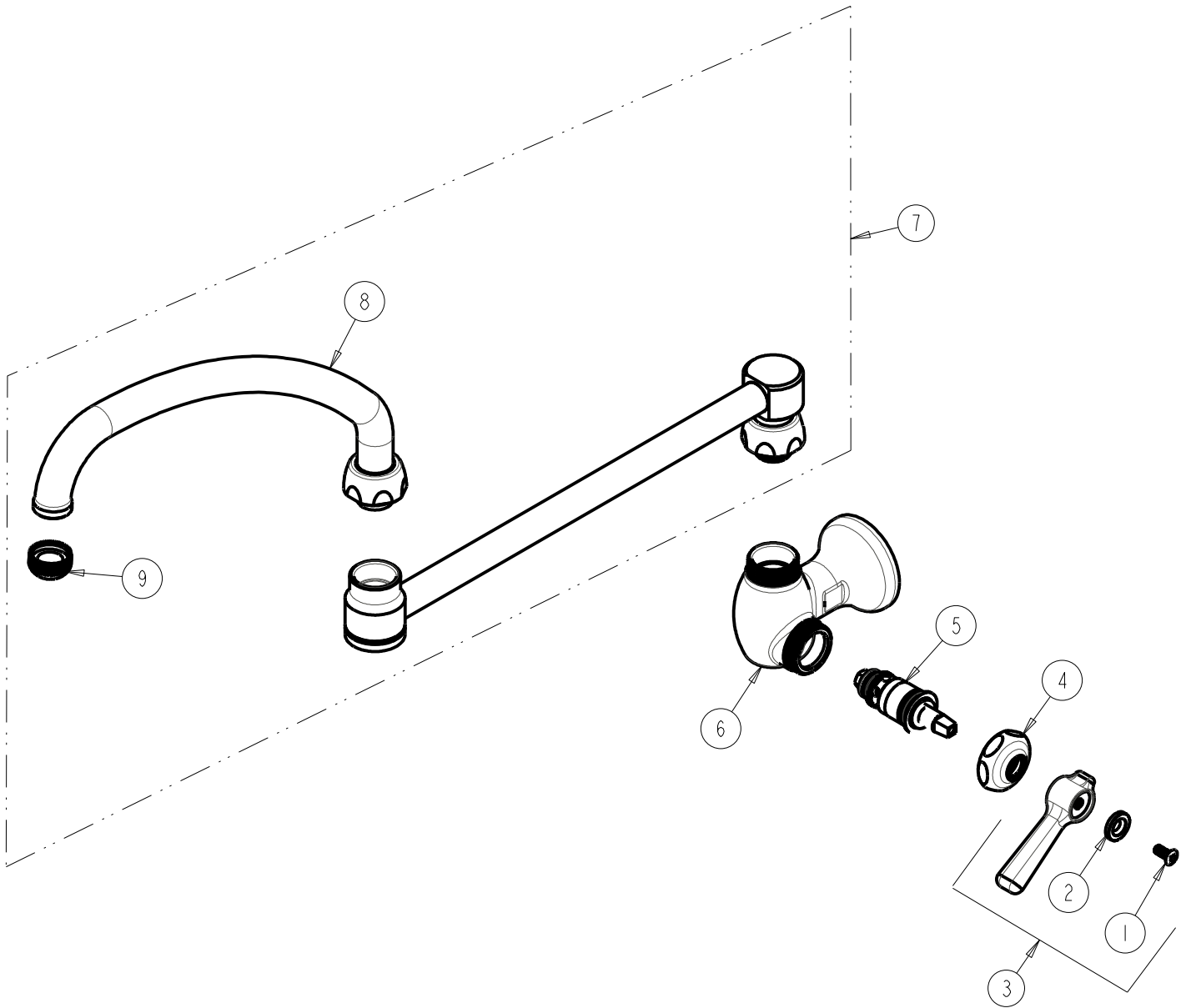
FITTING NO.

332-DJ21ABCP

SUBMITTED MODEL NO.

ITEM NO.

**FOR TECHNICAL ASSISTANCE**  
1-800-TEC-TRUE (1-800-832-8783)



ITEM	PART NO.	DESCRIPTION
1	420-010JKRCF	SCREW, 10-32 UNC PH 1/2
2	633-123JKNF	INDEX BUTTON (BLUE)
3	369-COLDJKCP	LEVER HANDLE ASSEMBLY
4	1-214JKCP	CAP
5	1-099XTJKABNF	QUATURN CARTRIDGE (RH)
6	-----	VALVE BODY (NOT SOLD SEPARATELY)
7	DJ21JKABCP	SPOUT
8	L9LESE3JKCP	TUBE SPOUT ASSEMBLY
9	E1JKABRCF	QUIXTOP OUTLET