



# AquaDeco

## Barrier Free, Bi-Level, Pedestal Mounted Drinking Fountain

### SUGGESTED SPECIFICATIONS

Model ABE2900B is a barrier free pedestal mounted, vandal resistant, bi-level square drinking fountain made from 18 gage, 304 stainless steel bowls mounted into a reinforced brown concrete aggregate pedestal. Unit shall be activated by front mounted self-closing buttons, by using less than 5 pounds of force, which activates internally mounted valves with adjustable stream regulators controlling the water flow. Bubblers shall be polished chrome plated brass with non-squirt features and operate on water pressure range of 20 - 105 psig. Unit shall adhere to ANSI A117.1 and Americans with Disabilities Act of 1990 frontal approach and protruding objects requirements, Adult ADA parallel and frontal approach and ANSI/NSF 61, Section 9.

Standard Model:  
ABE2900B



### STANDARD FEATURES

- Resistant to sunlight, heat, moisture and wear
- 18 gage, 304 stainless steel bowls
- Reinforced concrete with aggregate finish
- Polished chrome plated brass, anti-rotation non-squirt bubblers
- 100 mesh inlet strainer
- Access door, heavy duty steel, vandal resistant
- Vandal resistant galvanized steel bottom plate



Member of  
U.S. Green  
Building  
Council



Recyclable  
Product



Water  
Conserving  
Product

### OPTIONAL ACCESSORIES (additional costs)

- - CH30 Child height, 30" bubbler height
- - FRU2 Freeze resistant valve
- - FS Foot spray
- - HB1 Hose bibb, compression, with hose threaded outlet/VB
- - HB2 Hose bibb, loose key, with hose threaded outlet/VB
- - HB4 Hose bibb, loose key, vandal resistant, hose threaded outlet/VB
- - IGM In-ground 14" mounting
- - JF1 Jug filler, plain end with self-closing valve
- - JF2 Jug filler, recessed, plain end with self-closing valve
- - PF Pet fountain receptor
- "S" Polished stainless steel, lead-free bubbler (Use model ABE2900S)
- - SCS Square concrete step
- "8" Tan concrete aggregate finish (Use model ABE2800B)

Acorn Aqua™ assumes no responsibility for use of void or suspended data. © Copyright 2009 Acorn Aqua™, City of Industry, CA, A Division of Acorn Engineering Company. Please visit [www.acornaqua.com](http://www.acornaqua.com) for most current specifications.

Submittal # **ABE2900B**  
[Sec. B] Rev. C 8/1/09

COMPLIES WITH  
**STANDARDS**



ANSI / NSF 61.9



Member of Acorn  
Family of Companies

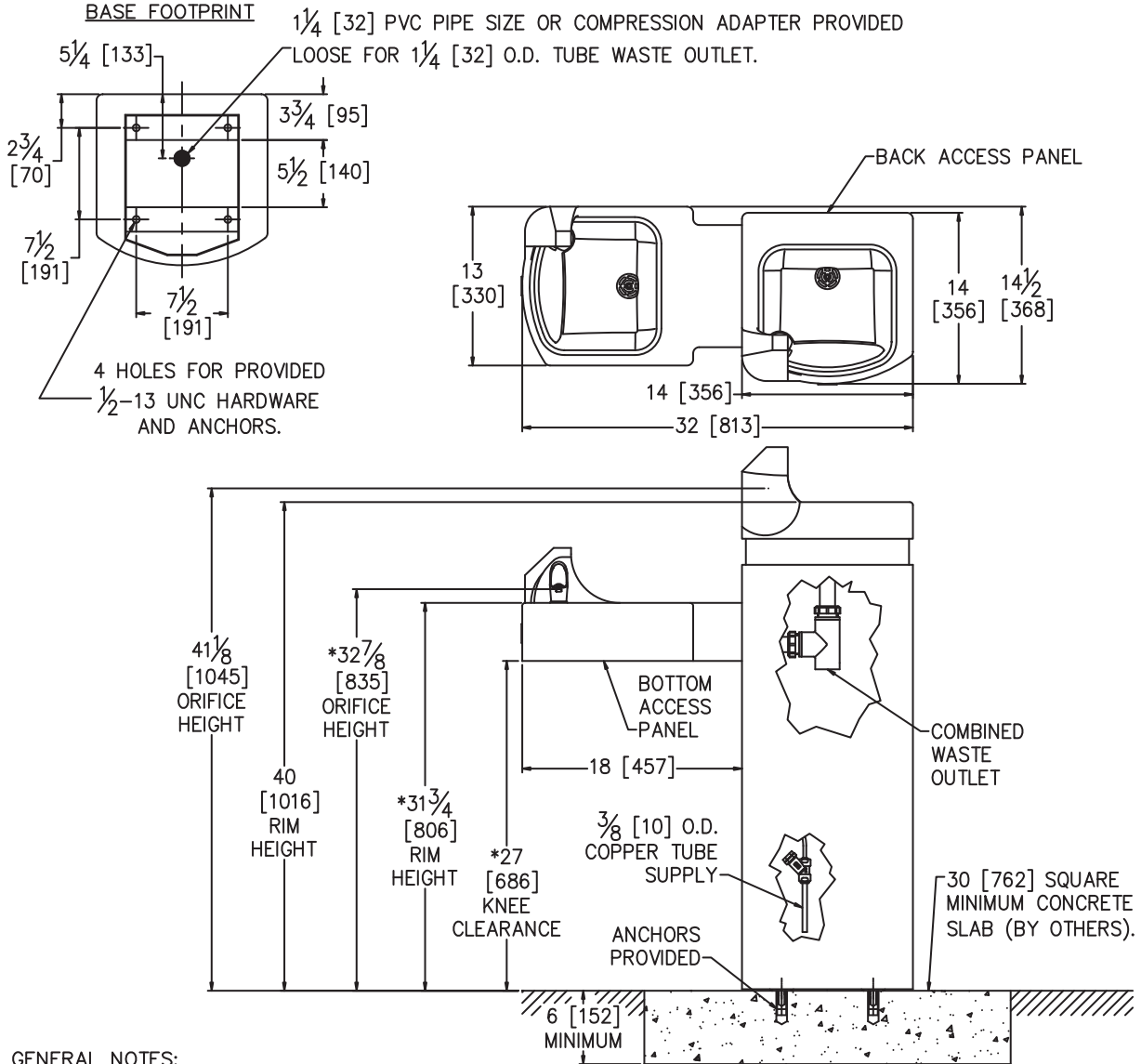
ACORN AQUA  
15125 Proctor Avenue  
City of Industry, CA  
91746 U.S.A.  
Phone 800-591-9360  
626-336-4561  
Fax 626-855-4894  
[www.acornaqua.com](http://www.acornaqua.com)



# TECHNICAL DIMENSIONS

All dimensions are nominal and subject to manufacturer's change without notice. Acorn Aqua™ assumes no responsibility for use of void or suspended data. © 2009 Acorn Aqua™, a Division of Acorn Engineering Company. Please visit [www.acornaqua.com](http://www.acornaqua.com) for most current specifications.

□ Standard Model:  
ABE2900B



**GENERAL NOTES:**

1. ALL DIMENSIONS ARE IN INCHES [MM].
- \*2. STANDARD ADULT HEIGHT MODEL SHOWN. OPTIONAL -CH30 CHILD HEIGHT MODEL AVAILABLE.
3. STOP VALVE NOT PROVIDED.

**AquaDeco Barrier Free, Bi-Level, Pedestal Mounted Drinking Fountain**

Rough-in # **ABE2900B** Rev. B 8/1/09

*Five Year Limited Warranty- (Continental United States and Canada Only) The following components are warranted for five years: Compressor, Condenser Coil and Refrigeration Coil. The following components shall only be warranted for a period of one year: Evaporator Can Assembly, Thermostat, Fan Motor, Cartridge, Push Buttons, Compressor Starting Relay/Overload/Capacitor and Activation Linkage. Other parts are warranted for one (1) year from date of installation.*

*Limited Export Warranty- One (1) year on parts only.*

SELECTION SUMMARY & APPROVAL FOR MANUFACTURING

Company \_\_\_\_\_

Model Number & Options \_\_\_\_\_ Quantity \_\_\_\_\_

Contact \_\_\_\_\_ Title \_\_\_\_\_

Signature (Approval for Manufacturing) \_\_\_\_\_

Date \_\_\_\_\_



**800-591-9360**  
626-336-4561  
[www.acornaqua.com](http://www.acornaqua.com)