

ELKAY®

SPECIFICATIONS

Versatile Bi-Level Wall Mount Water Cooler Hands Free® Sensor & Pushbar Activated Filtered with LED Visual Monitor Model LZOSTL8

RATED FOR INDOOR USE ONLY

PRODUCT SPECIFICATION

Self-contained, wall mount sensor-activated electric two-level water cooler. Model LZOSTL8 shall deliver 8 GPH of 50°F drinking water at 90°F ambient and 80°F inlet water. Right-hand unit shall have electronic sensor-operated Hands-Free® operation. Left-hand unit shall have self-closing Easy-Touch Controls on front, left and right. Unit shall meet ADA guidelines. Shall include the WaterSentry® VII 500-gallon capacity filter, certified to NSF/ANSI 42 and 53. Unit shall be lead-free design which is certified to NSF/ANSI 61 and 372 and meets Federal and State low-lead requirements. Unit shall be certified to UL399 and CAN/CSA 22.2 No. 120.

STANDARD FEATURES

- Electronic sensor-operated Hands-Free® operation on right-hand unit
- Easy-Touch front and side pushbar controls on left-hand unit
- WaterSentry® VII 1500-gallon capacity Filtration System, certified to NSF/ANSI 42 & 53 (Lead, Class 1 Particulate, Chlorine, Taste & Odor)
- Visual Filter monitor advises when filter replacement is necessary and helps maintain that users always has the best filtered water available to them. Features a three light system of Green, Red and Yellow indicators.
- Exclusive Flexi-Guard® Safety bubbler
- *Versatile design allows units to be installed either left-hand high and right-hand low or left-low and right high
- Cooler panel finishes: Light Gray Granite Vinyl Clad Steel or Stainless Steel
- Rated for Indoor Use

COOLING SYSTEM (Model LZOSTL8)

- Compressor: Hermetically-sealed, reciprocating type, single phase. Sealed-in lifetime lubrication.
- Condenser: Fan cooled, copper tube with aluminum fins. Fan motor is permanently lubricated.
- Cooling Unit: Combination tube-tank type. Self-cleaning. Continuous copper tubing with stainless steel tank. Fully insulated with EPS foam that meets UL requirements for self-extinguishing material.
- Refrigerant Control: Refrigerant R134a is controlled by accurately calibrated capillary tube.
- Temperature Control: Easily accessible enclosed adjustable thermostat is factory preset. Requires no adjustment other than for altitude requirements.

Warranty: 5 year limited warranty on the unit's refrigeration system. Electrical components and water system are warranted for 12 months from date of installation or 18 months from factory shipment, whichever date falls first.



*Versatile cooler configuration as shipped



*Versatile cooler configuration alternate installation






CONSTRUCTION

- Electronic Hands-Free® operation: On-off solenoid valve is actuated by an infrared light beam sensor. When light beam is interrupted by user in front of cooler, the sensor actuates to begin water dispensing. A built-in time delay is provided to prevent actuation by passerby traffic.
- Fountain Top: One piece stainless steel top, polished to a uniform Elkay satin luster finish
- Frame: Galvanized steel chassis support
- Exclusive Flexi-Guard® Safety bubbler: Innovative design utilizes an infused anti-microbial pliable polyester elastomer to prevent accidental mouth injuries. Flexes on impact.
- Upper Shroud: Contoured shock-absorbing provides additional protection against accidental injury. No exposed fasteners.
- Removable Wrapper: One-piece design offers easy accessibility to interior.
- Cooler cabinet available as Light Gray Granite Vinyl Clad Steel or Stainless Steel (additional cost) construction

REPLACEMENT FILTER:

- 51299C (single)

| CAPACITIES CHART | | | | | |  |  |  | | |
|------------------|-----------------|---------------------|-----------|-------------|------------------|--------------------------------------------------------------------------------------|---------------------------------------------------------------------------------------|---------------------------------------------------------------------------------------|--------------------------------------------|--|
| Model | Voltage / Hertz | Chilling** Capacity | F.L. Amps | Rated Watts | Approx. Ship Wt. | UL399 and CAN/CSA 22.2 No. 120 Certified | ADA Compliant | NSF/ANSI 61 and 372 Certified | NSF/ANSI 42 and 53 Certified (Filter only) | |
| LZOSTL8*C | 115V / 60Hz | 8 GPH | 4.0 | 370 | 75 lbs | • | • | • | • | |
| LZOSTL8*2JOC | 220V / 50Hz | 6.7 GPH | 2.0 | 370 | 75 lbs | ++ | • | • | • | |
| LZOSTL8*3JOC | 220V / 60Hz | 8 GPH | 2.0 | 370 | 75 lbs | ++ | • | • | • | |

*Color code of (L) Light Gray Granite or (S) Stainless Steel cooler panels.
**Based on 80°F inlet water & 90°F ambient air temp for 50°F chilled drinking water.
++Complies; not third party certified.

This specification describes an Elkay product with design, quality and functional benefits to the user. When making a comparison of other producer's offerings, be certain these features are not overlooked.

Versatile Bi-Level Wall Mount Water Cooler
Hands Free® Sensor & Pushbar Activated,
Filtered with LED Visual Monitor
Model LZSTL8

ELKAY®
ROUGH-IN DIMENSIONS

RATED FOR INDOOR USE ONLY

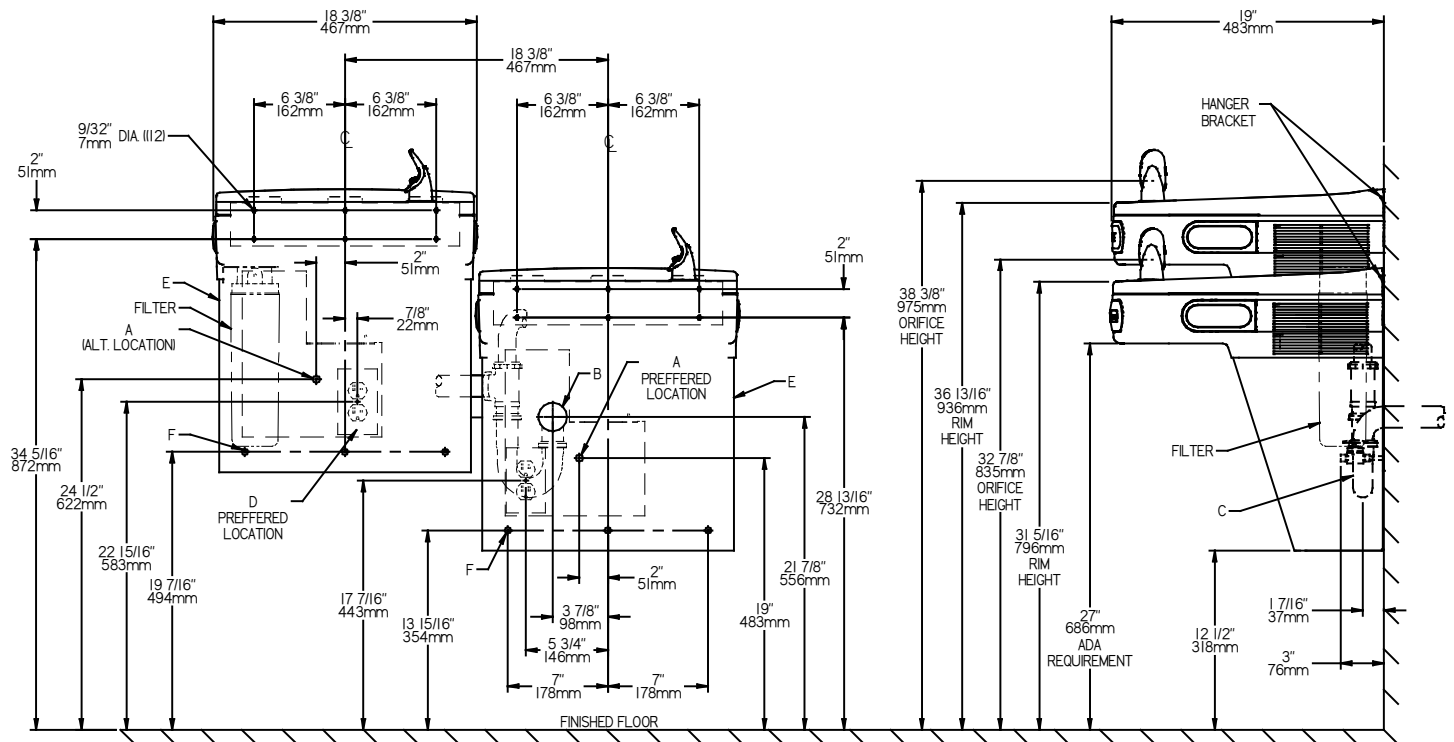
IMPORTANT! INSTALLER PLEASE NOTE:

These units are designed and built to provide water to the user which has not been altered by materials in the cooler waterway. The grounding of electrical equipment such as telephone, computers, etc. to water lines is a common procedure. This grounding may be in the building but may also occur away from the building. This grounding can cause electrical feedback into a water cooler creating an electrolysis which results in a metallic taste or an increase in the metal content of the water. This condition is avoidable by installing the cooler using the proper materials as shown.

NOTICE

This water cooler must be connected to the water supply using a dielectric coupling. The cooler is furnished with a non-metallic strainer which meets this requirement. The drain trap which is provided by the installer should also be plastic to completely isolate the cooler from the building plumbing system.

ROUGH-IN FOR LEFT-HAND HIGH SIDE MODELS



REDUCE HEIGHT BY 3 INCHES FOR INSTALLATION OF CHILDRENS ADA COOLER

LEGEND:

- A = Recommended Water Supply location. Shut-off Valve (not furnished) to accept 3/8" O.D. unplated copper tube. Up to 3" (76mm) maximum out from wall.
- B = Recommended Waste Outlet location. To accommodate 1-1/2" nominal drain. Drain stub 2" (51mm) out from wall.
- C = 1-1/2" Trap (not furnished).
- D = Electrical Supply (3) Wire Recessed Box Duplex Outlet.
- E = Insure proper ventilation by maintaining 6" (152mm) minimum clearance from cabinet louvers to wall.
- F = 7/16" (11mm) Bolt Holes for fastening to wall.

NOTE: New Installations Must Use Ground Fault Circuit Interrupter (GFCI)

| | |
|---------------------|------------------|
| Job Name: | _____ |
| Model: | _____ Qty. _____ |
| Contact: | _____ |
| Approval Signature: | _____ |
| Notes: | _____ |

Versatile Bi-Level Wall Mount Water Cooler
Hands Free® Sensor & Pushbar Activated,
Filtered with LED Visual Monitor
Model LZOSTL8

ELKAY®
ROUGH-IN DIMENSIONS

RATED FOR INDOOR USE ONLY

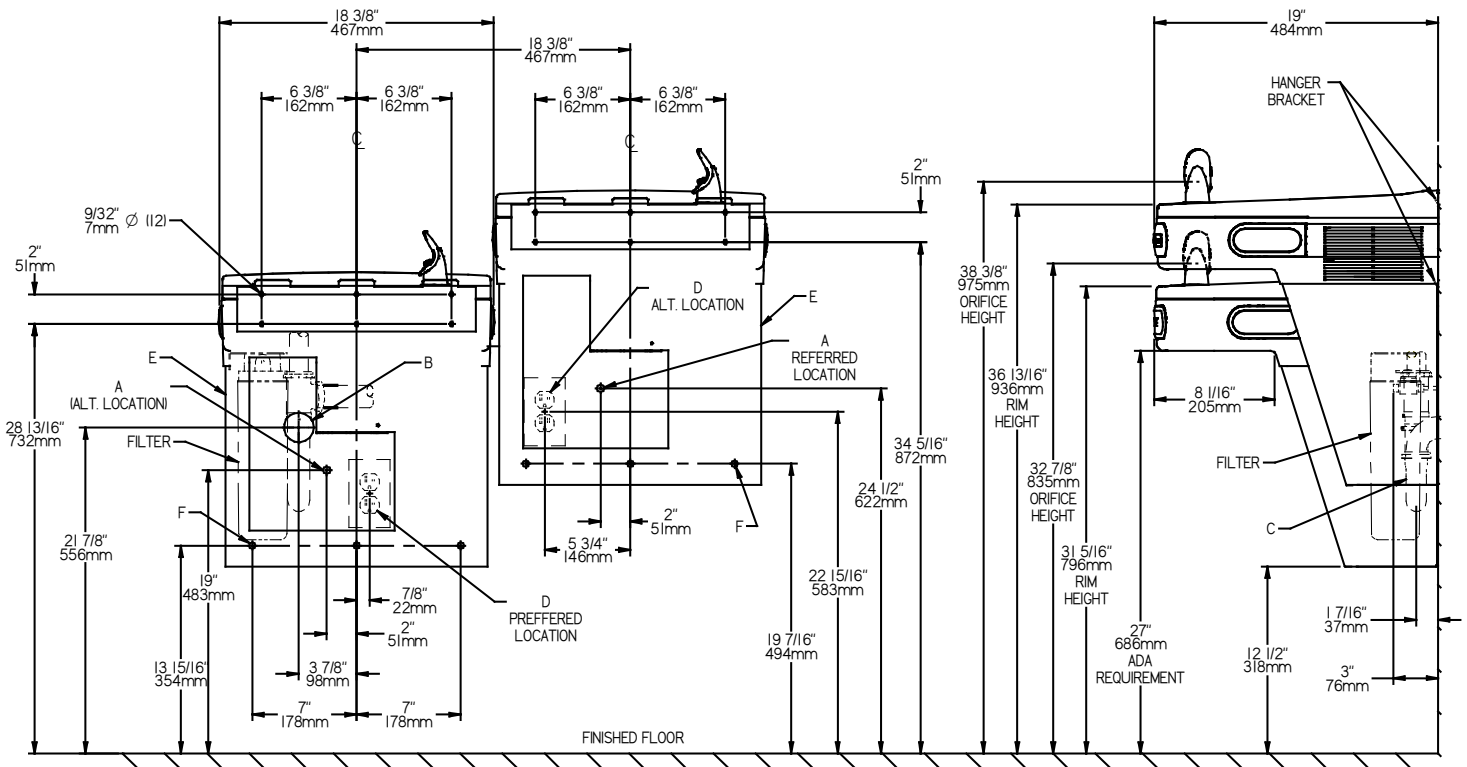
IMPORTANT! INSTALLER PLEASE NOTE:

These units are designed and built to provide water to the user which has not been altered by materials in the cooler waterway. The grounding of electrical equipment such as telephone, computers, etc. to water lines is a common procedure. This grounding may be in the building but may also occur away from the building. This grounding can cause electrical feedback into a water cooler creating an electrolysis which results in a metallic taste or an increase in the metal content of the water. This condition is avoidable by installing the cooler using the proper materials as shown.

NOTICE

This water cooler must be connected to the water supply using a dielectric coupling. The cooler is furnished with a non-metallic strainer which meets this requirement. The drain trap which is provided by the installer should also be plastic to completely isolate the cooler from the building plumbing system.

ROUGH-IN FOR RIGHT-HAND HIGH SIDE MODELS



REDUCE HEIGHT BY 3 INCHES FOR INSTALLATION OF CHILDRENS ADA COOLER

LEGEND:

- A = Recommended Water Supply location. Shut-off Valve (not furnished) to accept 3/8" O.D. unplated copper tube. Up to 3" (76mm) maximum out from wall.
- B = Recommended Waste Outlet location. To accommodate 1-1/2" nominal drain. Drain stub 2" (51mm) out from wall.
- C = 1-1/2" Trap (not furnished).
- D = Electrical Supply (3) Wire Recessed Box Duplex Outlet.
- E = Insure proper ventilation by maintaining 6" (152mm) minimum clearance from cabinet louvers to wall.
- F = 7/16" (11mm) Bolt Holes for fastening to wall.

NOTE: New Installations Must Use Ground Fault Circuit Interrupter (GFCI)

| | |
|---------------------|------------------|
| Job Name: | _____ |
| Model: | _____ Qty. _____ |
| Contact: | _____ |
| Approval Signature: | _____ |
| Notes: | _____ |