



## Commercial Brass Operations

August 14, 2009

To: Zurn Rep Agents and Customers

From: Phil Painter



## Technical Bulletin # 081409

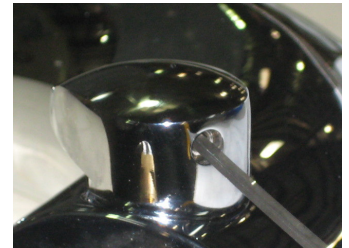
### Z6918-ADM Faucets

This technical bulletin serves to provide information that will help installers and customers a correct installations mode for the battery replacement.

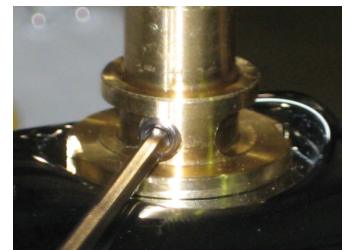
1. Signal for low voltage in the Battery.  
The sensor blinks consecutively, when the faucet is activated by a target in place.



2. Shut down the faucet main water supply.  
Remove the MV Handle Set Screw until the Handle can be removed from the Faucet. Remove the Handle.



3. Remove the small Set Screw from the MV Handle Stem and place aside.



4. Remove the MV Stem assembly.  
**Careful not to lose the inner stem.**



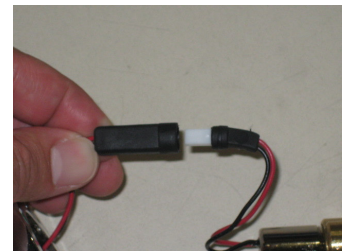
5. Loosen the VB Set Screw from the Faucet (Opposite Side from MV Handle).



6. Pull the Faucet Body from the brass base. **Care must be taken not to scratch or damage the brass base.**



7. Disconnect the Solenoid Cable from the Sensor / Battery connector.



8. Remove the Sensor from the faucet body by gently pushing the Lens through cavity opening.



9. Gently remove the Sensor / Battery from the cavity. **CARE MUST BE USED NOT TO SCRATCH LENS WHEN REMOVING.**



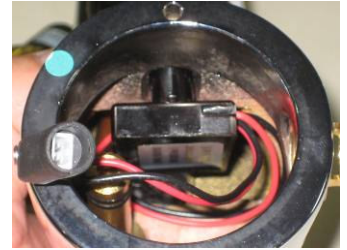
10. Remove the Battery Connector Cap and Battery Connector. Replace the old battery for the new one, and reconnect everything again.



11. Slide the Battery first into the faucet body.



12. Slide the Sensor Assembly with the Capacitor facing into the faucet body cavity and slide the Sensor into the sensor opening. **CARE NOT TO SCRATCH THE LENS.**



13. Reconnect the Solenoid Cable / Sensor Cable.

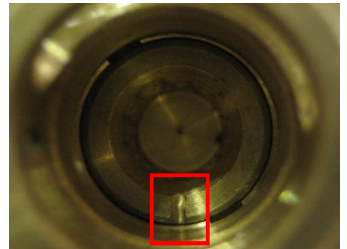


14. Slide the faucet body over the brass base, aligning the supply stud with the hole in the faucet body, gently push the faucet body down until the o-rings are seated. **DO NOT PINCH BATTERY / SENSOR CABLES.**



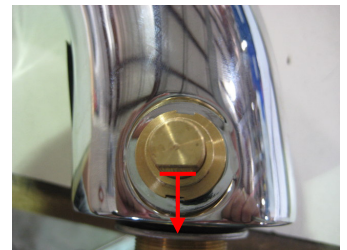
15. **IMPORTANT:**

Align the notch on the MV Stem pocket so it faces down towards the threaded shank.

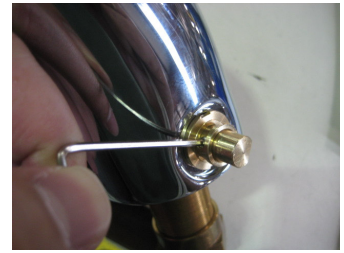


16. **IMPORTANT:**

Align the MV Stems flat down so it faces the threaded shank.



17. Rotate the MV Stem set screw forward in the limiting slot in the forward position and assemble the Set Screw to 1/8 turn tight.



18. Position the MV Handle and assemble the VB Set Screw to 1/8 turn tight.



19. The faucet is ready to operate normally.



Make sure the water is flowing normally from both sides of the MV. If water is not flowing normally through the faucet, make sure step 15 has been followed and the notch is in the right position as indicated in the picture.