

**CHICAGO FAUCETS**  
a Geberit company

2100 South Clearwater Drive  
Des Plaines, IL 60018  
Phone: 847-803-5000  
Fax: 847-803-5454  
www.chicagofaucets.com

**REPAIR PARTS**

BY: JAR    DATE: 12-28-07  
CHK: *[Signature]*    REV:

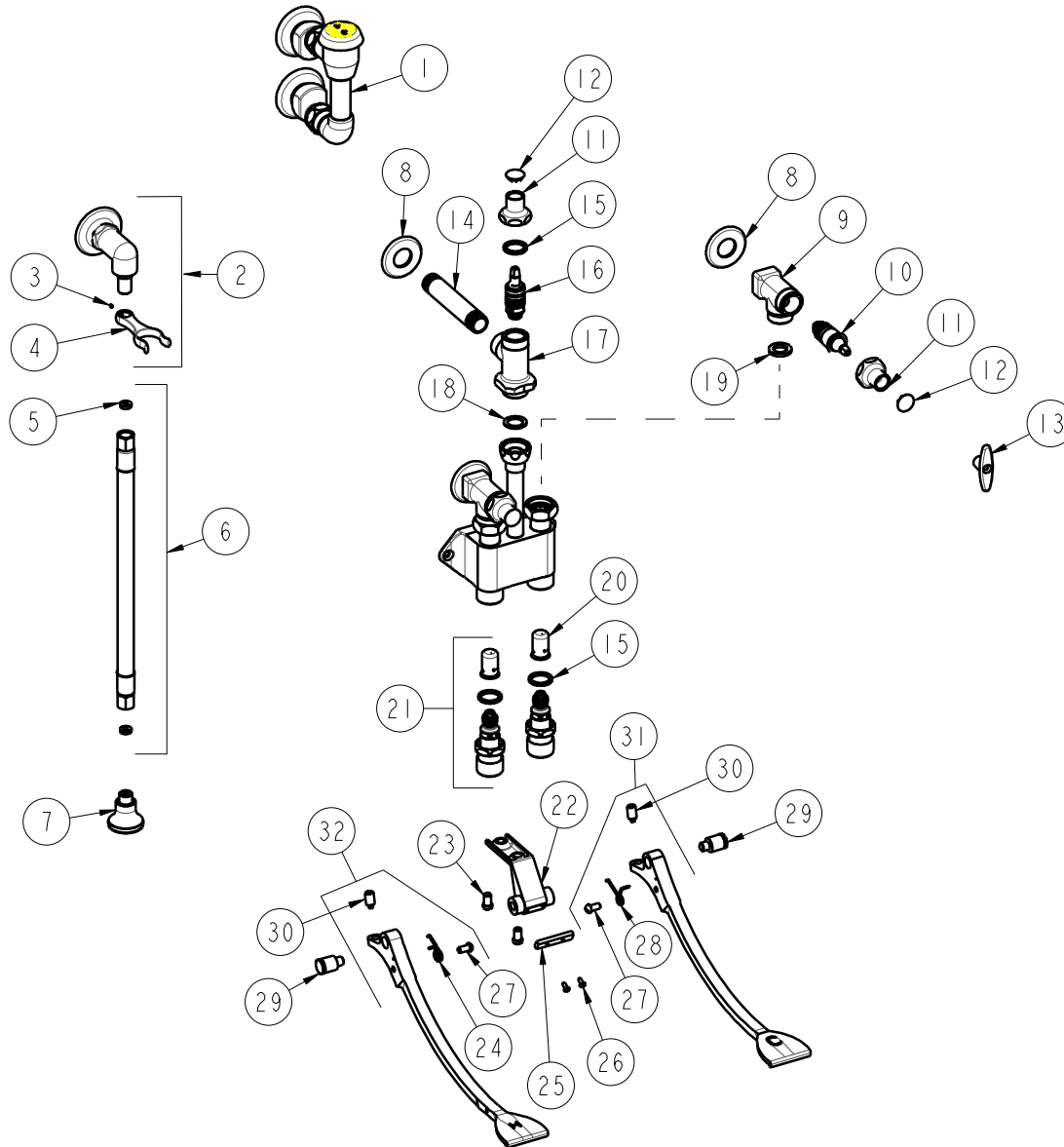
FITTING NO.

**910-GCP**

SUBMITTED MODEL NO.

ITEM NO.

**FOR TECHNICAL ASSISTANCE**  
1-800-TEC-TRUE (1-800-832-8783)



ITEM	PART NO.	DESCRIPTION	ITEM	PART NO.	DESCRIPTION
1	892-GCP	FOR PARTS SEE 892-GCP	17	—	BODY 1/2 INLET X 1/2 OUTLET
2	777-033JKCP	ANGLE SHANK ASSEMBLY	18	698-002JKNF	GASKET, .98 X .69 X .06
3	777-013JKNF	SCREW, SET 6-32 X 1/8	19	1-011JKNF	WASHER, .97 X .62 X .12
4	—	FORK (NOT SOLD SEPARATELY)	20	333-075JKNF	DASHPOT
5	739-051JKNF	GASKET, 1/2 X 1/4 X 1/8	21	625-XJKNF	FOR PARTS SEE 625-X
6	739-048JKNF	4' WHITE VINYL HOSE ASSEMBLY	22	834-013JKCP	PEDAL BRACKET
7	E21JKCP	ROSE SPRAY OUTLET	23	625-006JKBNF	SCREW, PAN HEAD 5/16-18 UNC
8	417-019JKCP	FLANGE, 1.94 X .88 X .11	24	834-010JKNF	SPRING, LH PEDAL
9	—	VALVE BODY (NOT SOLD SEPARATELY)	25	834-012JKNF	PEDAL STOP
10	217-XTLHJKNF	CARTRIDGE, SLO-COMPRESSION	26	76-008JKNF	SCREW, ROUND HEAD 6-32
11	1-246JKCP	NUT, CAP LOOSE KEY 1-1/8-18 UNEF	27	173-032JKNF	SCREW, ROUND HEAD 1/4-20 X 1/2
12	1-144JKCP	BUTTON	28	834-011JKNF	SPRING, RH PEDAL
13	293-006JKRCF	HANDLE, TEE INCLUDES SCREW	29	625-061JKRCF	BOLT, SHOULDER 3/8-24 UNF X 5/8 HEX
14	528-020JKCP	NIPPLE, 1/2 NPT X 4-1/4	30	745-025JKNF	SCREW, PEDAL 3/8-24 UNF
15	1-043JKNF	GASKET, CAP 1 X .80 X .09	31	834-107KJKNF	PEDAL ASSEMBLY (COLD)
16	217-XMVCLHJKNF	LH SLO-COMP. METAL VOL. CONTROL	32	834-007KJKNF	PEDAL ASSEMBLY (HOT)