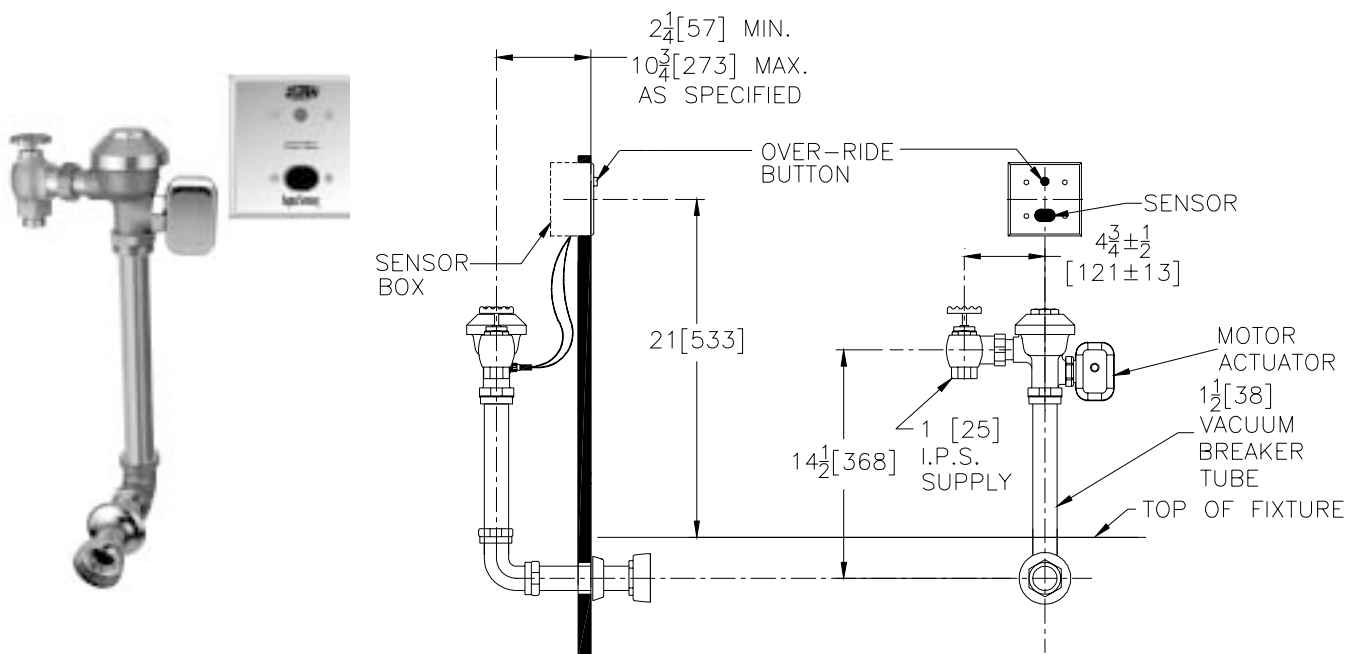




AquaSense® AV™ Model

TAG \_\_\_\_\_

## Concealed ZEMS6140AV Model Hardwired Sensor Flush Valve For Water Closets



### Flow Options

- |   |                          |
|---|--------------------------|
| <input type="checkbox"/> -WS1           | 1.6 Gal. Low Consumption |
| <input type="checkbox"/> -FF            | 4.5 Gal. Full Flush      |
| <input type="checkbox"/> Standard Flush | 3.5 Gallons Per Flush    |

### Suffix Options (Check/Specify Appropriate Options)

- |            |                                       |
|------------|---------------------------------------|
| _____ -BB  | Battery Back-up                       |
| _____ -HW6 | 120VAC/6VDC Hardwired Power Converter |
| _____ -MJ  | Mini Junction Box                     |
| _____ -PC6 | 120VAC/6VDC Plug-In Power Converter   |
| _____      | Other                                 |

**NOTE: MUST USE EITHER ZURN P6000-HW6 HARDWIRE POWER CONVERTER OR ZURN P6000-PC6 PLUG-IN POWER CONVERTER TO ENSURE PROPER OPERATION. USING A POWER CONVERTER OTHER THAN ZURN MAY RESULT IN OPERATION MALFUNCTION OR UNIT FAILURE.**

### ENGINEERING SPECIFICATION: ZURN ZEMS6140AV AquaSense 'AV' Concealed Hardwired Automatic Sensor Flush Valve For Water Closets-

Concealed, quiet diaphragm-type, rough brass, flushometer valve with Zurn's AquaVantage TPE, chloramine resistant, dual seal diaphragm with a clog resistant triple filtered by-pass. The valve incorporates a 6 VDC motorized actuator, an automatic sensor with a manual push-button over-ride, high back pressure vacuum breaker, one piece hex coupling nut and adjustable tailpiece, spud coupling and flange for back spud connection. Switchable sensor features include: courtesy flush, automatic 8 hour flush, and diagnostic indicator lights. Control stop has internal siphon-guard protection, and a sweat solder kit. Internal seals are made of chloramine resistant materials. Electrical box by others (see installation instructions for type and style). Note: Order power converter separate, one power converter operates up to eight valves.

This space is for Architectural/engineering Approval

ZURN INDUSTRIES, INC. ♦ COMMERCIAL BRASS OPERATION ♦ 5900 ELWIN BUCHANAN DRIVE ♦ SANFORD NC 27330

Phone: 1-800-997-3876 ♦ Fax: 919-775-3541 ♦ World Wide Web: [www.zurn.com](http://www.zurn.com)

In Canada: ZURN INDUSTRIES LIMITED ♦ 3544 Nashua Drive ♦ Mississauga, Ontario L4V1L2 ♦ Phone: 905-405-8272 Fax: 905-405-1292

AquaVantage® and AV are trademarks of Zurn Industries, Inc.  
AquaSense® is a registered trademarks of Zurn Industries, Inc.

Rev. D  
Dwg. No. 65422

Date: 02/27/06  
Product No. ZEMS6140AV