

CHICAGO FAUCETS

Last As Long As The Building



2100 SOUTH CLEARWATER DRIVE
DES PLAINES, ILLINOIS 60018-5999

FITTING NO.

913-AGV

SUBMITTED MODEL NO.

JOB NAME

ITEM NO.

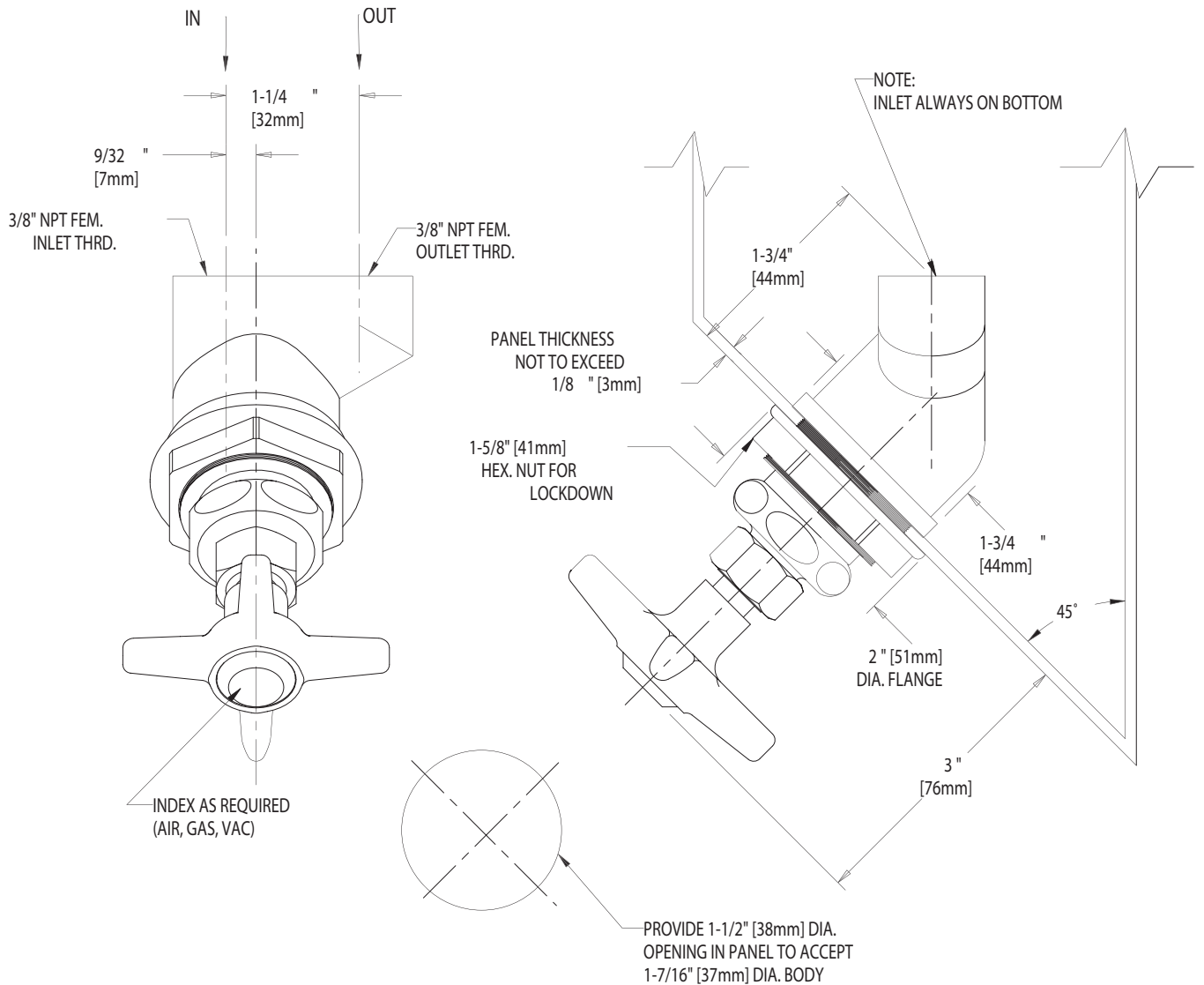
SUBMITTED AS SHOWN

SUBMITTED AS NOTED

SEE ATTACHED FOR
SUBMITTED MODIFICATION

IS ASSUMED FOR USE OF SUPERCEDED OR VOIDED DATA. (0192-1)

ROUGHING IN DIMENSIONS MAY VARY AND ARE SUBJECT TO CHANGE. NO RESPONSIBILITY



DIMENSIONS IN INCHES AND [MILLIMETERS].

TECHNICAL DATA

- PANEL MOUNT RIGHT HAND ANGLE CONTROL VALVE
- FOR USE ON 45 DEGREE ANGLE PANEL
- NEEDLE VALVE CARTRIDGE (FRONT LOADED)
- 204 INDEXED CROSS HANDLE
- FINISH: CHROME PLATE

DATE: 05-24-02

BY: SID

CHK'D:

APP'D:

REV: A

913-AGV