

Location:




Museo™

Tub & Shower System S-5302

Specification Submittal



Feature Highlights

- Symmons Tub and Shower System with lever handles.
- Symmons Temptrol® pressure-balancing mixing valve with adjustable stop screw to limit handle turn
- Secondary integral diverter/volume control handle
- Showerhead, single mode #532SH
- Showerhead arm and flange
- Standard flow rate is 2.5 gpm (9.5 L/min)
Optional lower flow rate restrictor available 
- Tub spout, #532TS
- Polished chrome finish

Model Numbers

- S-5302
Tub-Shower System with Symmons Temptrol® pressure-balancing mixing valve p/n S-4002-BODY
- S-5302-TRM
Trim only, mixing valve ordered separately
- S-4002-BODY
Symmons Temptrol® mixing valve without trim
- S-4002-X-BODY
Symmons Temptrol® mixing valve without trim. Valve includes integral service stops to allow water shut-off for service

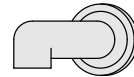
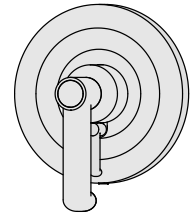
Finish Options / Modifications

Append appropriate -suffix to model number

- STN Satin nickel
- BLK Polished graphite
- Polished chrome (standard finish)



Standards / Certifications

ASME A112.18.1-2005/CSA B125.1-05



Options / Modifications

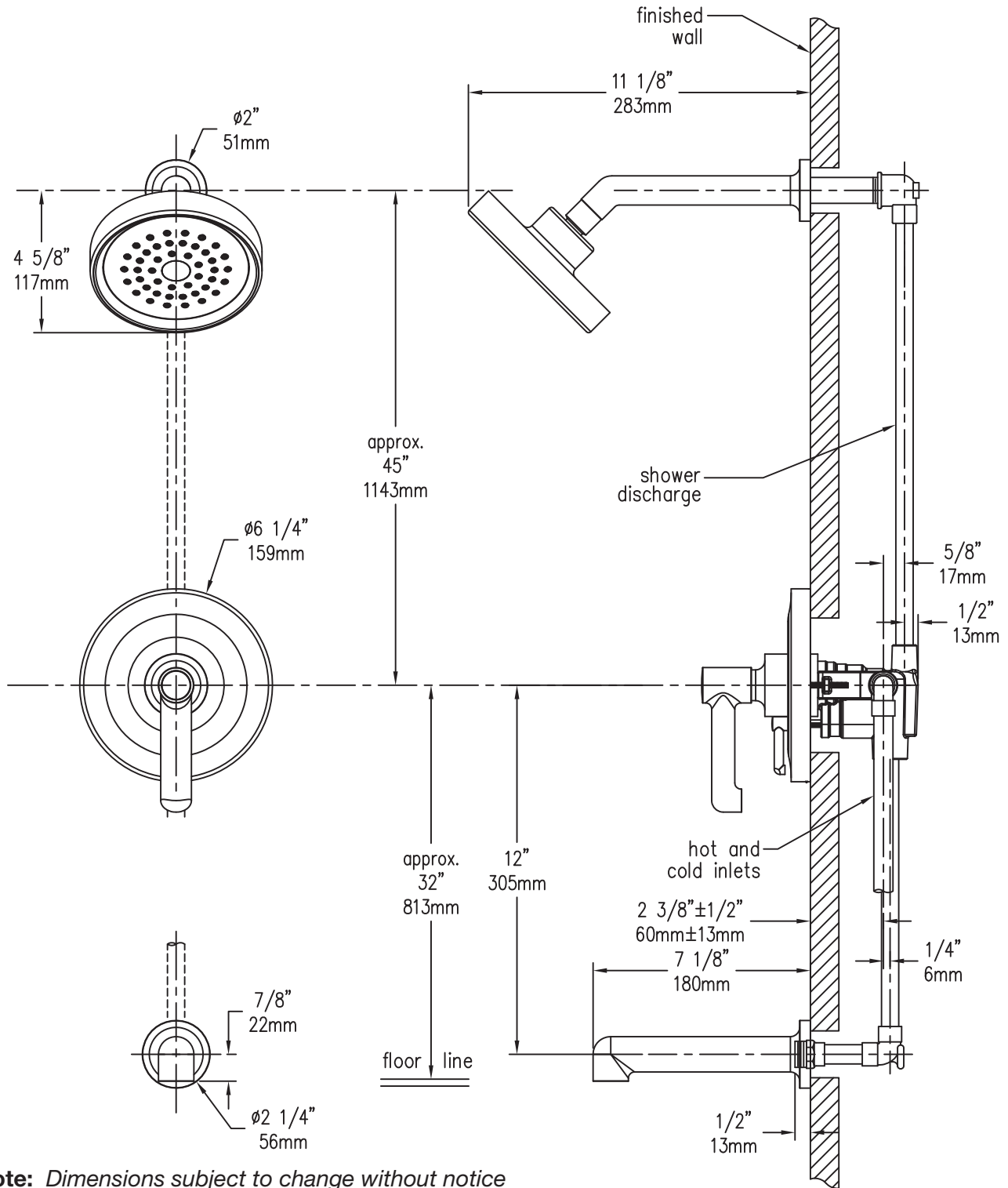
Append appropriate -suffix to model number

- IPS 1/2 inch female IPS connections on Symmons Temptrol® mixing valve
- X Symmons Temptrol® mixing valve includes integral service stops to allow water shut-off for service, p/n S-4002-X-BODY. (Option only applies when ordering model S-5302)
- REV Reverse coring in valve for back to back installations; hot on right, cold on left, (available with -X integral stops only)
- L/HD Showerhead not included. (Includes showerhead arm and flange only)
-  -2.0 2.0 (7.6 L/min) flow rate restrictor
-  -1.5 1.5 (5.7 L/min) flow rate restrictor

Warranty

- Limited Lifetime - to the original end purchaser in consumer installations
- 5 years - for commercial installations

Dimensions Museo Tub-Shower System, S-5302



Note: Dimensions subject to change without notice

Symmons Industries, Inc. ■ 31 Brooks Drive ■ Braintree, MA 02184
 (800) 796-6667, (781) 848-2250 ■ Fax (800) 961-9621, (781) 664-1300
 Website: www.symmons.com ■ Email: customerservice@symmons.com

©2010 Symmons Industries, Inc. Printed in U.S.A. ■ 060410 ■ ZV-850

SYMMONS[®]
 the smart choice[™]