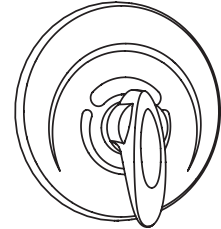
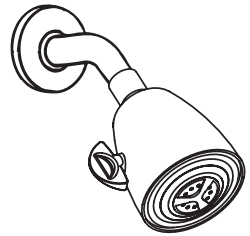


Location:

  
**SYMMONS® Safetymix®**  
**Tub and Shower System 1-215-X**  
**Specification Submittal**



**Feature Highlights**

- Symmons tub and shower system with a lever handle.
- Symmons Safetymix pressure balancing mixing valve with adjustable stop screw to limit handle turn.
- Integral service stops - allows water shut-off at valve for service
- Diverter tub spout with twin ell
- Single mode, super showerhead #4-231 with arm and flange.
- Showerhead has adjustable flood or mist spray.
- Standard flow rate 2.5 gpm (9.5 L/min)
- Polished chrome finish

**Model Numbers**

- 1-215-X Tub and Shower System with Symmons Safetymix pressure balancing mixing valve

**Finish Options**

*Append appropriate -suffix to model number.*

- Polished chrome finish (standard)

**Standards / Certifications**

ASME A112.18.1-2005/CSA B125.1-05

**Warranty**

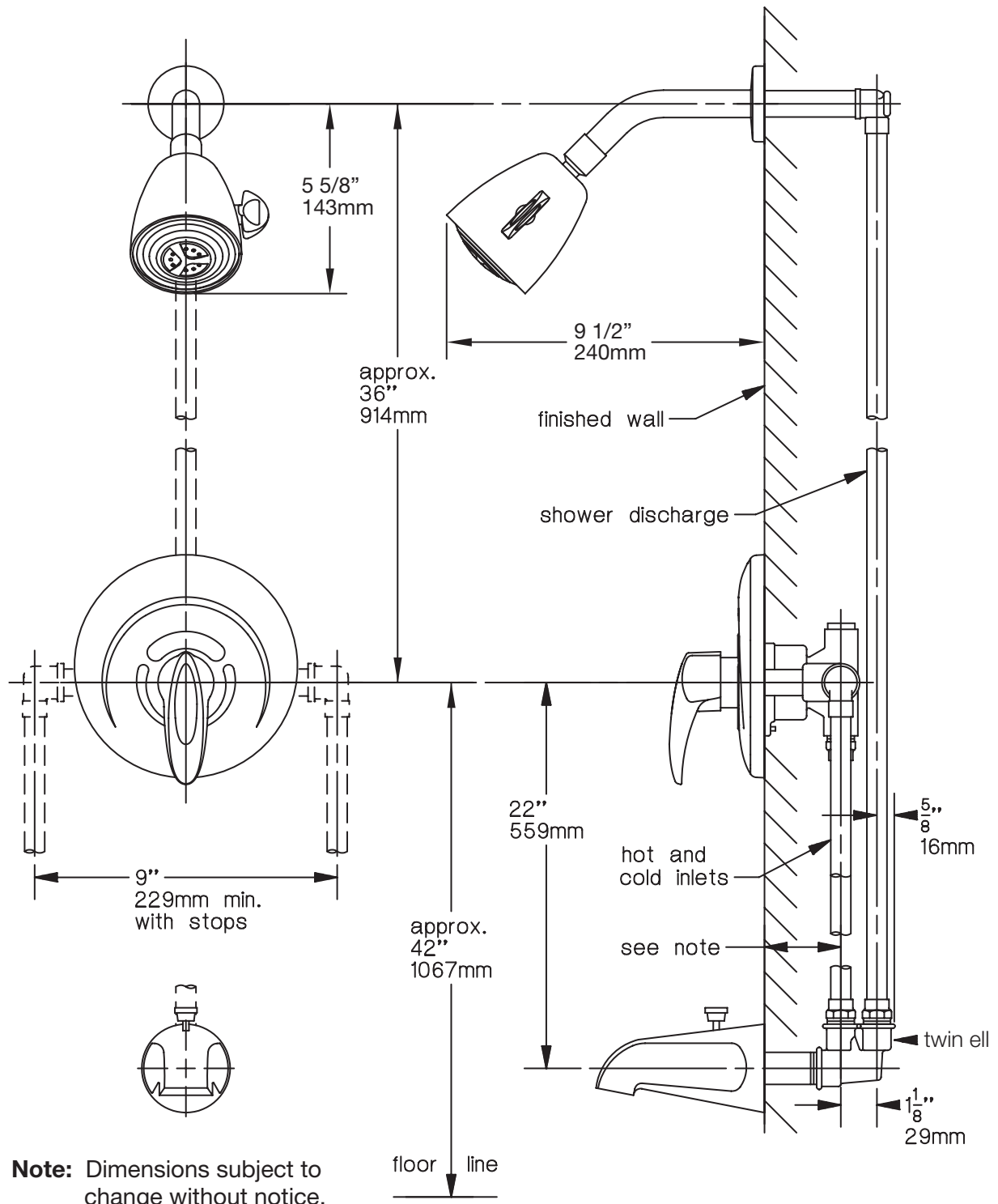
- Limited Lifetime - to the original end purchaser in residential/consumer installations.
- 5 years - for commercial installations

**Options / Modifications**

*Append appropriate -suffix to model number.*

- X-3/4 3/4" valve to increase flow approximately 20%
- X-REV Reverse coring, hot on right, cold on left, for back to back installations with integral stops only.
- X-CHKS Integral check stops—for use in installations where a positive shut-off device is used downstream of mixing valve
- E Showerhead #4-221 (showerhead #4-231 with external volume control added)
- 2.0 2.0 gpm (7.6 L/min) flow rate restrictor (not available with -E option, external volume control on showerhead)
- 1.5 1.5 gpm (5.7 L/min) flow rate restrictor
- VP Showerhead is vandal resistant
- NU NU-Arm showerhead bracket in place of #300 standard arm and flange.
- G Dial thermometer
- T Toe tester in place of standard tub spout

## Dimensions *Safetymix Tub and Shower System, 1-215-X*



Symmons Industries, Inc. ■ 31 Brooks Drive ■ Braintree, MA 02184  
 (800) 796-6667, (781) 848-2250 ■ Fax (800) 961-9621, (781) 664-1300  
 Website: [www.symmons.com](http://www.symmons.com) ■ Email: [customerservice@symmons.com](mailto:customerservice@symmons.com)

©2010 Symmons Industries, Inc. Printed in U.S.A. ■ 082510

**SYMMONS**<sup>®</sup>  
 the smart choice™