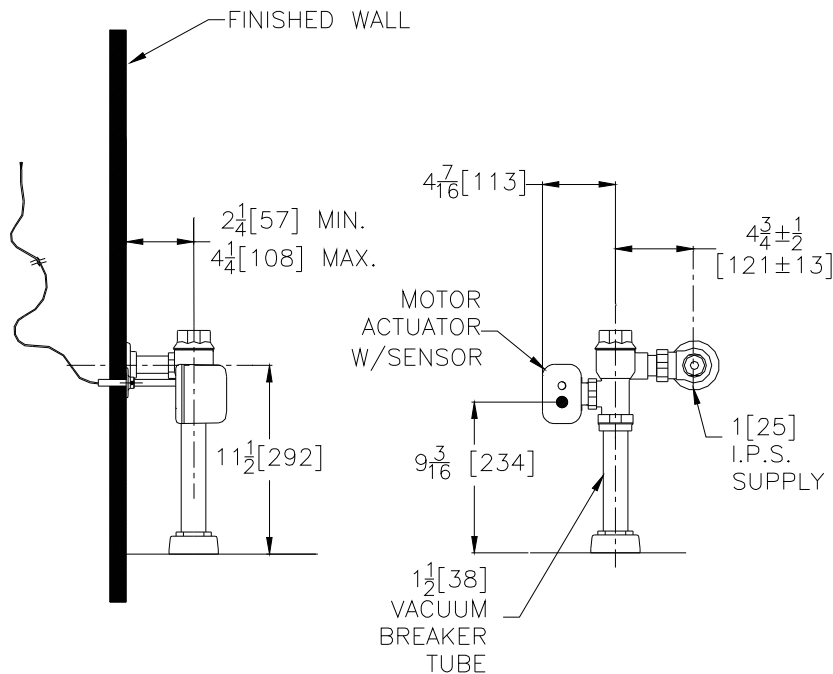




Exposed ZEMS6200-IS Metroflush Model

Hardwired Automatic Sensor Flush Valve

For Water Closets



Flow Options

- | | |
|---|--------------------------------|
| <input type="checkbox"/> -WS1 | 1.6 Gal. Low Consumption Flush |
| <input type="checkbox"/> Standard Flush | 3.5 Gallons Per Flush |

Suffix Options (Check/Specify Appropriate Options)

- | | |
|-----------|-------------------------|
| _____ -YJ | Split Ring Pipe Support |
| _____ -YK | Solid Ring Pipe Support |
| _____ -YO | Bumper On Angle Stop |
| _____ | Other |

Accessories (Order separate as specified)

- | | |
|-----------|--|
| P6000-PC6 | Plug-in Power Converter
(Up to 4 valves) |
| P6000-MJ | Mini Junction Box |
| P6000-HW6 | Hardwire Power Converter
(Up to 8 valves) |

NOTE: MUST USE EITHER ZURN P6000-HW6 HARDWIRE POWER CONVERTER OR ZURN P6000-PC6 PLUG-IN POWER CONVERTER TO ENSURE PROPER OPERATION. USING A POWER CONVERTER OTHER THAN ZURN MAY RESULT IN OPERATION MALFUNCTION OR UNIT FAILURE.

The information contained in this document is subject to change without notice.
Please contact Zurn for most up to date information.

ENGINEERING SPECIFICATION: ZURN ZEMS6200-IS Metroflush Exposed Hardwired AquaSense® Flush Valve For Water Closets-

The Metroflush valve is a piston operated brass flush valve with a polished chrome exterior. The valve is ADA compliant and incorporates a motorized actuator, an integral infrared convergence-type proximity sensor and a manual push-button override into an all-metal, polished chrome plated housing. Complete with Zurn's MetroVantage chloramine resistant piston with a clog resistant filtered by-pass, high back pressure vacuum breaker, one piece hex coupling nut, adjustable tailpiece, spud coupling and flange for top spud connection. Control stop has internal siphon-guard protection and a wall flange with set screw. Internal seals are made of chloramine resistant materials.

This space is for Architectural/engineering Approval

ZURN INDUSTRIES, LLC. ♦ COMMERCIAL BRASS OPERATION ♦ 5900 ELWIN BUCHANAN DRIVE ♦ SANFORD NC 27330

Phone: 1-800-997-3876 ♦ Fax: 919-775-3541 ♦ World Wide Web: www.zurn.com

In Canada: ZURN INDUSTRIES LIMITED ♦ 3544 Nashua Drive ♦ Mississauga, Ontario L4V1L2 ♦ Phone: 905-405-8272 Fax: 905-405-1292