

Guardian

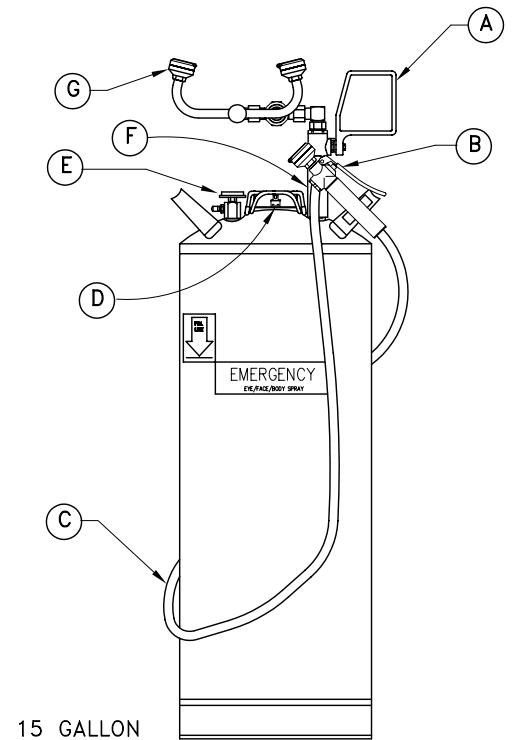
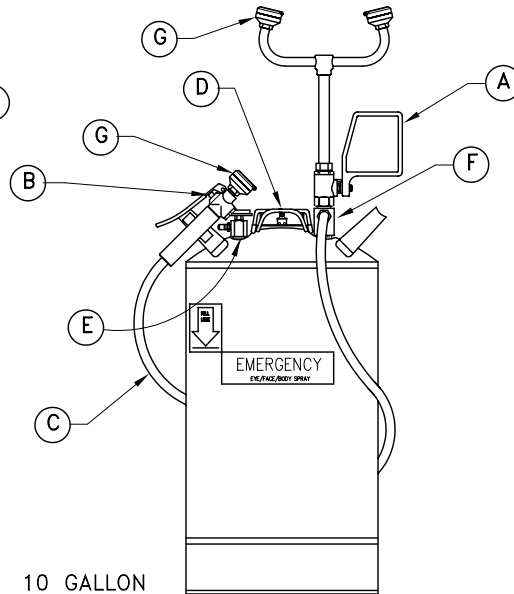
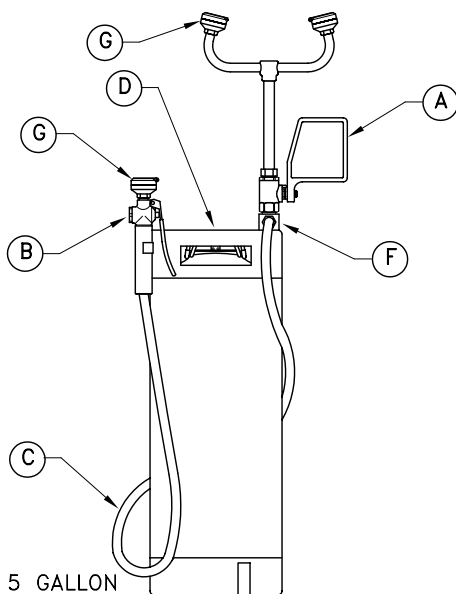
EMERGENCY EYEWASH & SHOWER TECHNOLOGY

Guardian Equipment
1140 N North Branch St
Chicago, IL 60642

312 447 8100 TELEPHONE
312 447 8101 FACSIMILE
gesafety.com

PARTS LISTING PORTABLE EYE WASH/DRENCH HOSE UNITS

- (A) BALL VALVE ASSEMBLIES
 - CHROME PLATED BRASS VALVE W/EPOXY COATED ALUMINUM FLAG HANDLE
AP600-101V (1/2" IPS STAY-OPEN)
- (B) SQUEEZE VALVES
 - CHROME PLATED BRASS
AP600-240 (3/8" IPS FEMALE OUTLET)
RK600-240 (REPAIR KIT FOR SQUEEZE VALVES)
- (C) HOSE ASSEMBLIES
 - HIGH PRESSURE REINFORCED PVC HOSE
NOTE: CONTACT FACTORY WITH UNIT MODEL NUMBER
FOR CORRECT HOSE ASSEMBLY PART NUMBER
- (D) TANK ACCESSORIES
 - 200-011R (TANK COVER W/PRESSURE RELIEF VALVE AND GASKET)
200-012 (GASKET FOR TANK COVER)
- (E) INLET FITTING ASSEMBLY
 - INCLUDES TEE FITTING, AIR INTAKE, AND PRESSURE GAUGE
AP400-004 (INLET ASSEMBLY)
- (F) OUTLET FITTINGS
 - CHROME PLATED BRASS
450-054B (FOR 10 GALLON UNITS)
450-054C (FOR 15 GALLON UNITS)
450-054D (FOR 5 GALLON UNITS)
- (G) SPRAY HEAD ASSEMBLIES
 - AP470-001 (GS PLUS SPRAY HEAD COMPLETE)
AP470-002R (DUST COVER FOR GS PLUS SPRAY HEAD)
AP470-004R (60 PPI POLYURETHANE FILTER)



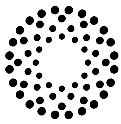
UNITS (EXCEPT THOSE WITH SELF-CLOSING VALVES) COMPLY WITH THE REQUIREMENTS OF ANSI Z358.1.

TEST ALL EMERGENCY EQUIPMENT AT LEAST WEEKLY.

Drawing Number: PL-PORT

Approved: _____

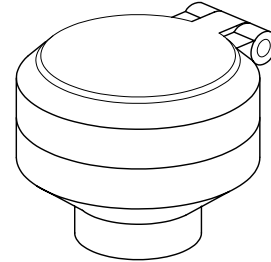
Revision Number: 052008-JPP



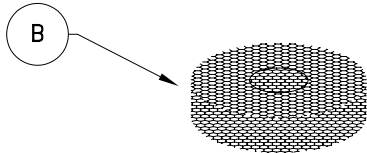
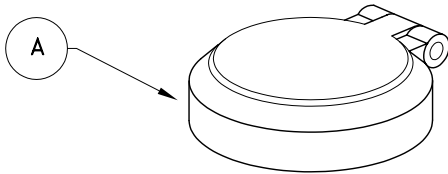
SPRAY HEAD ASSEMBLY INSTRUCTIONS GS PLUS SPRAY HEADS

THIS GUARDIAN EQUIPMENT PRODUCT IS EQUIPPED WITH GS PLUS SPRAY HEADS. EACH HEAD FEATURES:

- TOUGH POLYPROPYLENE PLASTIC CONSTRUCTION
- HIGHLY VISIBLE INTEGRATED NYLON DUST COVER
- EASILY ACCESSIBLE 1.8 GPM FLOW CONTROL
- DENSE (60 PORE PER INCH) POLYURETHANE FILTER
- UNIQUE DESIGN PROVIDES A CONSISTENTLY SOFT, FULL SPRAY OF WATER ACROSS A RANGE OF WORKING PRESSURES FROM 20 TO 100 PSI.

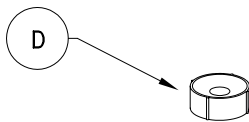
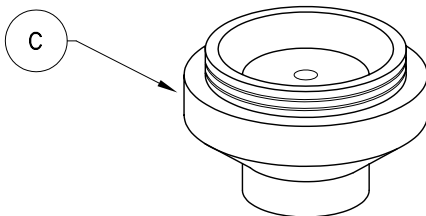


PART NUMBER:
AP470-001



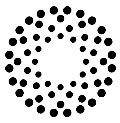
- (A) AP470-002R
- (B) 470-004R
- (C) 470-001R
- (D) 470-005R

- DUST COVER AND CAP ASSEMBLY
- 60 PPI POLYURETHANE FILTER
- PLASTIC BODY
- 1.8 GPM FLOW CONTROL



IMPORTANT:

**IN ORDER TO OPERATE PROPERLY, THE FLOW CONTROL
MUST BE INSERTED INTO THE BODY CONCAVE END FIRST**



Guardian

EMERGENCY EYEWASH & SHOWER TECHNOLOGY

Guardian Equipment
1140 N North Branch St
Chicago, IL 60642

312 447 8100 TELEPHONE
312 447 8101 FACSIMILE
gesafety.com

FILLING INSTRUCTIONS PORTABLE UNITS

1. IMPORTANT: DE-PRESSURIZE UNIT BY ACTIVATING PRESSURE RELIEF VALVE IN TOP OF TANK FILL COVER.
2. RELEASE TENSION ON COVER BY LIFTING WIREFORM HANDLE ATTACHED TO COVER. REMOVE COVER FROM UNIT.
3. FILL UNIT TO FILL LINE WITH CLEAR, CLEAN WATER ONLY. THEN ADD ENTIRE BOTTLE OF BACTERIOSTATIC ADDITIVE INCLUDED WITH THE UNIT.

DO NOT OVERFILL!

DO NOT FILL WITH ANY OTHER SUBSTANCE!

4. REPLACE COVER AND RECLAMP SECURELY IN PLACE BY PRESSING WIREFORM HANDLE DOWN.
5. PRESSURIZE UNIT TO 95 P.S.I. MAXIMUM BY MEANS OF THE STANDARD TIRE PUMP CONNECTION PROVIDED. BE SURE TO USE A CLEAN AIR SOURCE.

DO NOT USE CO2 OR ANY OTHER
HIGH PRESSURE GAS!

DO NOT CONNECT DIRECTLY TO ANY
EXTERNAL AIR OR GAS SOURCE!

6. RUN UNIT MOMENTARILY TO PURGE AIR AND ANY CONTAMINANTS FROM SYSTEM.

NOTE: WATER SHOULD BE DRAINED AND REPLACED WITH FRESH WATER AND ONE BOTTLE OF BACTERIOSTATIC ADDITIVE AT LEAST ONCE EVERY SIX MONTHS.

CAUTION: KEEP UNIT AWAY FROM HEAT!

ALL EMERGENCY EQUIPMENT SHOULD BE TESTED AT LEAST WEEKLY TO ASSURE PROPER OPERATION.

UNITS (EXCEPT THOSE WITH SELF-CLOSING VALVES) COMPLY WITH THE REQUIREMENTS OF ANSI Z358.1. TEST ALL EMERGENCY EQUIPMENT AT LEAST WEEKLY.

Drawing Number: AI-FS1

Approved: _____

Revision Number: 112000-TPS