



T&S BRASS AND BRONZE WORKS, INC.

2 Saddleback Cove / P.O. Box 1088
Travelers Rest, SC 29690



REG. #A2601
ISO #9001

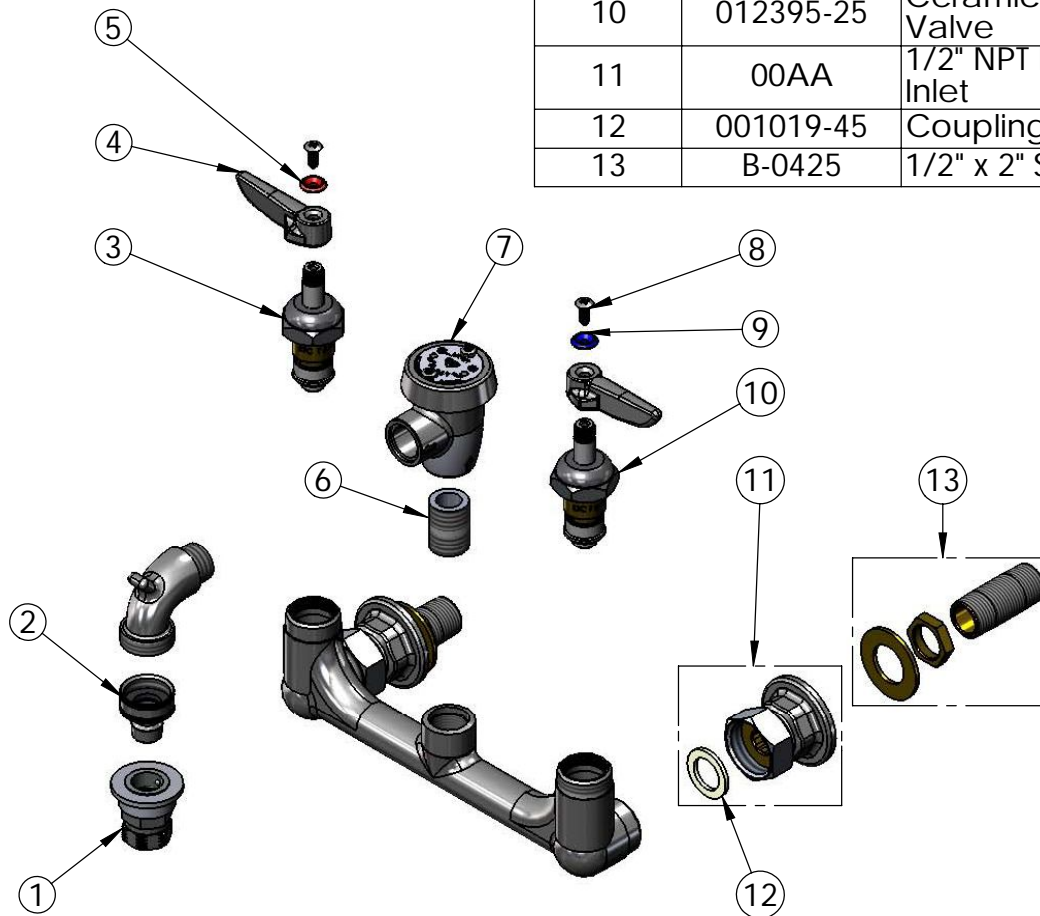
Model No.

B-2271-POL-CR

Item No.

Travelers Rest, SC: 800-476-4103 Simi Valley, CA: 800-423-0150 Fax: 864-834-3518 www.tsbrass.com

ITEM NO.	SALES NO.	DESCRIPTION
1	001371-45	Socket Quick Connect
2	001370-45	Plug, Quick Connect
3	012394-25	Ceramic Cartridge, RTC w/ Check Valve
4	001638-45	Lever Handle
5	001661-45	Red Index-HW
6	002534-25	Close Nipple, 1/2" x 1 5/32" Lg Rough Chrome
7	B-0969	Vacuum Breaker, 1/2"
8	000922-45	Lever Handle Screw
9	001660-45	Blue Index-CW
10	012395-25	Ceramic Cartridge, LTC w/ Check Valve
11	00AA	1/2" NPT Female Eccentric Flanged Inlet
12	001019-45	Coupling Nut Washer
13	B-0425	1/2" x 2" Supply Nipple



Product Specifications:

Service Sink, Cerama Cartridges w/ Check Valves,
Lever Handles, Polished Chrome

Drawn DHL	Checked KJG	Approved 10/07/09
Scale: 1:4		Date: 10/07/09