



# AquaCold

## Wall Mounted Water Cooler, 8 GPH

### SUGGESTED SPECIFICATIONS

Model A311108F is a self-contained, vandal resistant pressure water cooler that shall deliver a minimum of **8.0 GPH** (30.3 LPH) of water at 50°F (10°C) cooled from 80°F (26.7°C) inlet water and 90°F (32.2°C) ambient. Unit shall be activated by a self-closing push button which activates an internally mounted valve with an adjustable stream regulator controlling the water flow. Bubbler shall have a flexible guard with an integrally designed non-squirt feature and operate on water pressure range of 20 - 105 psig. Top shall be constructed from 304 stainless steel and have an integral drain. Cabinet shall be Granite powder coated on galvanized or stainless steel. Evaporator shall be insulated, tube on tank. Cooling system shall use R-134a refrigerant and be capillary tube controlled. An adjustable thermostat with an off position shall control the refrigeration system. Unit shall adhere to the requirements of ANSI/NSF 61, Section 9. Unit shall be listed by Underwriters Laboratories for both the US and Canada, compliant to the Air Conditioning and Refrigeration Institute Standard 1010.

**Standard Model:**  
A311108F

**Stainless Steel Model:**  
A311408F



Model A311108F Shown

### STANDARD FEATURES

- Granite powder coated
- Flexible, anti-rotation non-squirt bubbler
- Copper tube on stainless steel tank evaporator
- 100 mesh inlet strainer
- Vandal resistant screws

Model Number	GPH*	Rated Watts	Full Load Amps	Approx. Shipping Weight
A311108F	8.0	400	4.8	55 lbs.
A311408F	8.0	400	4.8	55 lbs.

\* GPH of 50°F water at 90°F ambient room temperature and 80°F inlet water temperature  
Compressor motor operates on 115 Volt / 60 Hz single phase.



Member of  
U.S. Green  
Building  
Council



Recyclable  
Product



Water  
Conserving  
Product

### OPTIONAL ACCESSORIES (additional costs)

- "B"** Polished chrome plated brass bubbler (Use model A311108**B**)
- CSC2 Concealed support carrier
- GF1 Glass filler
- HGF Hot water glass filler
- HP High polished stainless steel (Use model A311408F-HP)
- "P"** Push button polished chrome plated brass bubbler (Use model A311108**P**)
- "S"** Polished stainless steel, lead-free bubbler (Use model A311108**S**)
- WF1 1500 gallon capacity, NSF 42+53, 1 micron lead reduction filter
- 220V 220 volt / 50 Hz compressor (€€)
- "4"** All stainless steel (Use model A311408F)

Custom color finishes available upon request

Acorn Aqua™ assumes no responsibility for use of void or suspended data. © Copyright 2009 Acorn Aqua™, City of Industry, CA, A Division of Acorn Engineering Company. Please visit [www.acornaqua.com](http://www.acornaqua.com) for most current specifications.

Submittal # **A311108F**  
[Sec. C] Rev. D 8/1/09

COMPLIES WITH  
**STANDARDS**



Test rating conditions are compliant with ARI 1010.



Member of Acorn  
Family of Companies

ACORN AQUA  
15125 Proctor Avenue  
City of Industry, CA  
91746 U.S.A.  
Phone 800-591-9360  
626-336-4561  
Fax 626-855-4894  
[www.acornaqua.com](http://www.acornaqua.com)

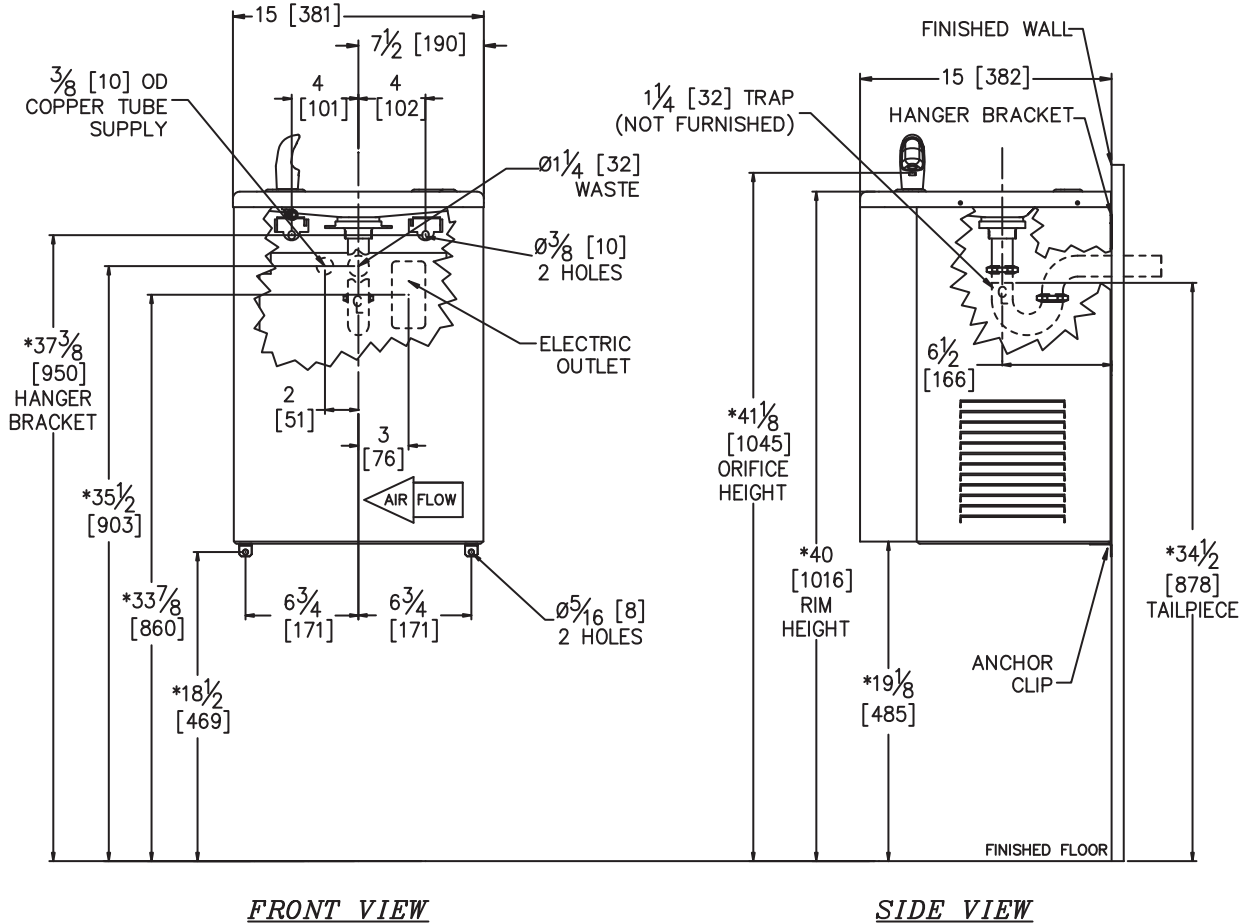


# TECHNICAL DIMENSIONS

All dimensions are nominal and subject to manufacturer's change without notice. Acorn Aqua™ assumes no responsibility for use of void or suspended data. © 2009 Acorn Aqua™, a Division of Acorn Engineering Company. Please visit [www.acornaqua.com](http://www.acornaqua.com) for most current specifications.

Standard Model:  
A311108F

Stainless Steel Model:  
A311408F



**GENERAL NOTES:**

1. ALL DIMENSIONS ARE IN INCHES [MM]
2. ALLOW 4 INCHES [102 MM] MINIMUM CLEARANCE PER SIDE FOR VENTILATION
- \*3. DIMENSIONS SHOWN ARE FOR RECOMMENDED ADULT HEIGHT. ADJUST VERTICAL DIMENSIONS AS NECESSARY TO COMPLY WITH FEDERAL, STATE, & LOCAL CODES.
4. STOP VALVE, TRAP, & ELECTRICAL OUTLET NOT SUPPLIED.
5. IMPORTANT: COOLER MUST BE ATTACHED TO WALL WITH ANCHOR SCREWS.

**AquaCold** Wall Mounted Water Cooler, 8 GPH

Rough-in # **A311108F** Rev. B 8/1/09

*Five Year Limited Warranty- (Continental United States and Canada Only) The following components are warranted for five years: Compressor, Condenser Coil and Refrigeration Coil. The following components shall only be warranted for a period of one year: Evaporator Can Assembly, Thermostat, Fan Motor, Cartridge, Push Buttons, Compressor Starting Relay/Overload/Capacitor and Activation Linkage. Other parts are warranted for one (1) year from date of installation.*

*Limited Export Warranty- One (1) year on parts only.*

SELECTION SUMMARY & APPROVAL FOR MANUFACTURING

Company \_\_\_\_\_

Model Number & Options \_\_\_\_\_ Quantity \_\_\_\_\_

Contact \_\_\_\_\_ Title \_\_\_\_\_

Signature (Approval for Manufacturing) \_\_\_\_\_

Date \_\_\_\_\_



**800-591-9360**  
626-336-4561  
[www.acornaqua.com](http://www.acornaqua.com)