



T&S BRASS AND BRONZE WORKS, INC.

2 Saddleback Cove / P.O. Box 1088
Travelers Rest, SC 29690



REG. #A2601
ISO #9001

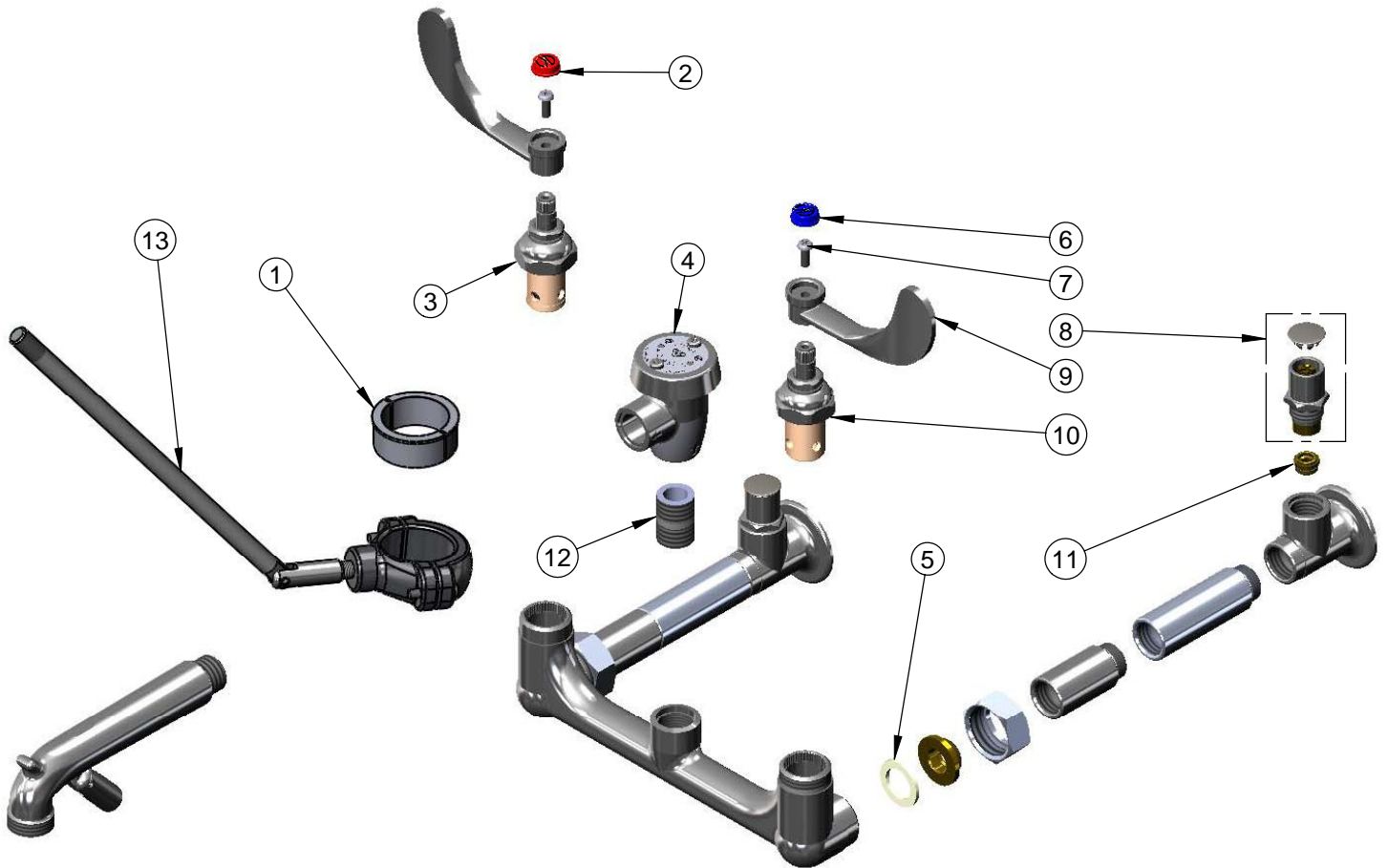
Model No.

B-0664-03

Item No.

Travelers Rest, SC: 800-476-4103 Simi Valley, CA: 800-423-0150 Fax: 864-834-3518 www.tsbrass.com

ITEM NO.	SALES NO.	DESCRIPTION
1	016863-20	Clamp Split Bushing (Set of 2 Halves)
2	001194-45	Red HW Index
3	012443-40	Hot Eterna Spindle Assembly w/ Spring Check
4	B-0969	Vacuum Breaker, 1/2"
5	001019-45	Coupling Nut Washer
6	001686-45	Blue CW Index
7	000925-45	Lab Handle Screw
8	002892-40	Stop Spindle Assembly w/ Cap
9	B-WH4	4" Wrist Action Handle
10	012442-40	Cold Eterna Spindle Assembly w/ Spring Check
11	000763-20	Seat
12	002534-25	Close Nipple, 1/2" x 1 5/32" Lg Rough Chrome
13	017882-40	Split Ring Pipe Clamp Lower Assembly



Product Specifications:

Service Sink Faucet, Polished Chrome Finish w/ Split-Ring Lower Support Clamp for use on Ø 1-1/2" Flush Tubes, 4" Wrist Handles, Vacuum Breaker, 1/2" NPT Female Inlets, Integral Service Stops

Drawn JRM	Checked	Approved
Scale: 1:4	Date:	