



# T&S BRASS AND BRONZE WORKS, INC.

2 Saddleback Cove / P.O. Box 1088  
Travelers Rest, SC 29690



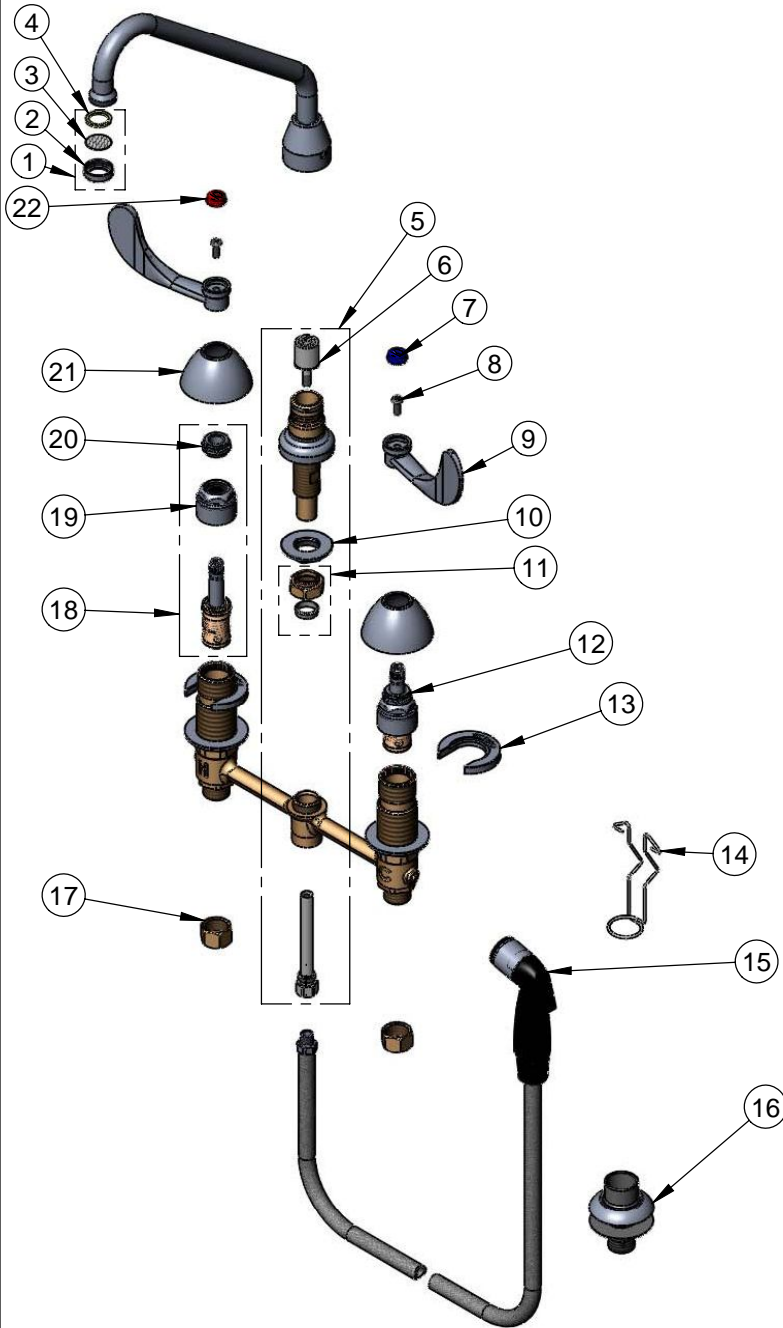
REG. #A2601  
ISO #9001

Model No.

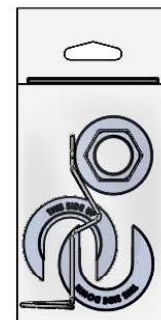
**B-2347-166X**

Item No.

Travelers Rest, SC: 800-476-4103 Simi Valley, CA: 800-423-0150 Fax: 864-834-3518 www.tsbrass.com



ITEM NO.	SALES NO.	DESCRIPTION
1	B-PT	Stream Regulator Outlet
2	000863-25	Index Ring
3	001323-45	Screen
4	001043-45	Washer
5	017208-40	Center Body Diverter Asy
6	002338-45	Diverter
7	001686-45	Blue CW Index
8	000925-45	Lab Handle Screw
9	B-WH4	4" Wrist Action Handle
10	016742-45	Center Flange Nut
11	016745-45	Compression Nut & Fitting
12	016752-40	CWS Bonnet & LTC Eterna Cartridge
13	016749-45	C-Washer
14	016777-45	CWS Hanger
15	001495-45	Side Spray
16	001496-45	Hose Guide
17	000958-20	Coupling Nut
18	016753-40	CWS Bonnet & RTC Eterna Cartridge
19	016743-25	CWS Bonnet Assembly
20	009002-25	Packing Assembly
21	001257-40	Bell Escutcheon
22	001194-45	Red HW Index



017245-40

Installation Repair Kit  
Includes #10, (2)#13, & #14

Product Specifications:

EasyInstall Faucet w/ 4" Sidespray, 4" Wrist Action Handles, Compression Cartridges, 8" Inlet Centers & 9" Swing Nozzle w/ Index Ring

Drawn <b>JRM</b>	Checked <b>GEF</b>	Approved <b>JHB</b>
Scale: <b>NTS</b>		Date: <b>07/31/08</b>