



T&S BRASS AND BRONZE WORKS, INC.

2 SADDLEBACK COVE / P.O. BOX 1088 / TRAVELERS REST, SC 29690

PHONE 800-476-4103

FAX 864-834-3518



REG.#A2601
ISO #9002

Model No.

B-0193

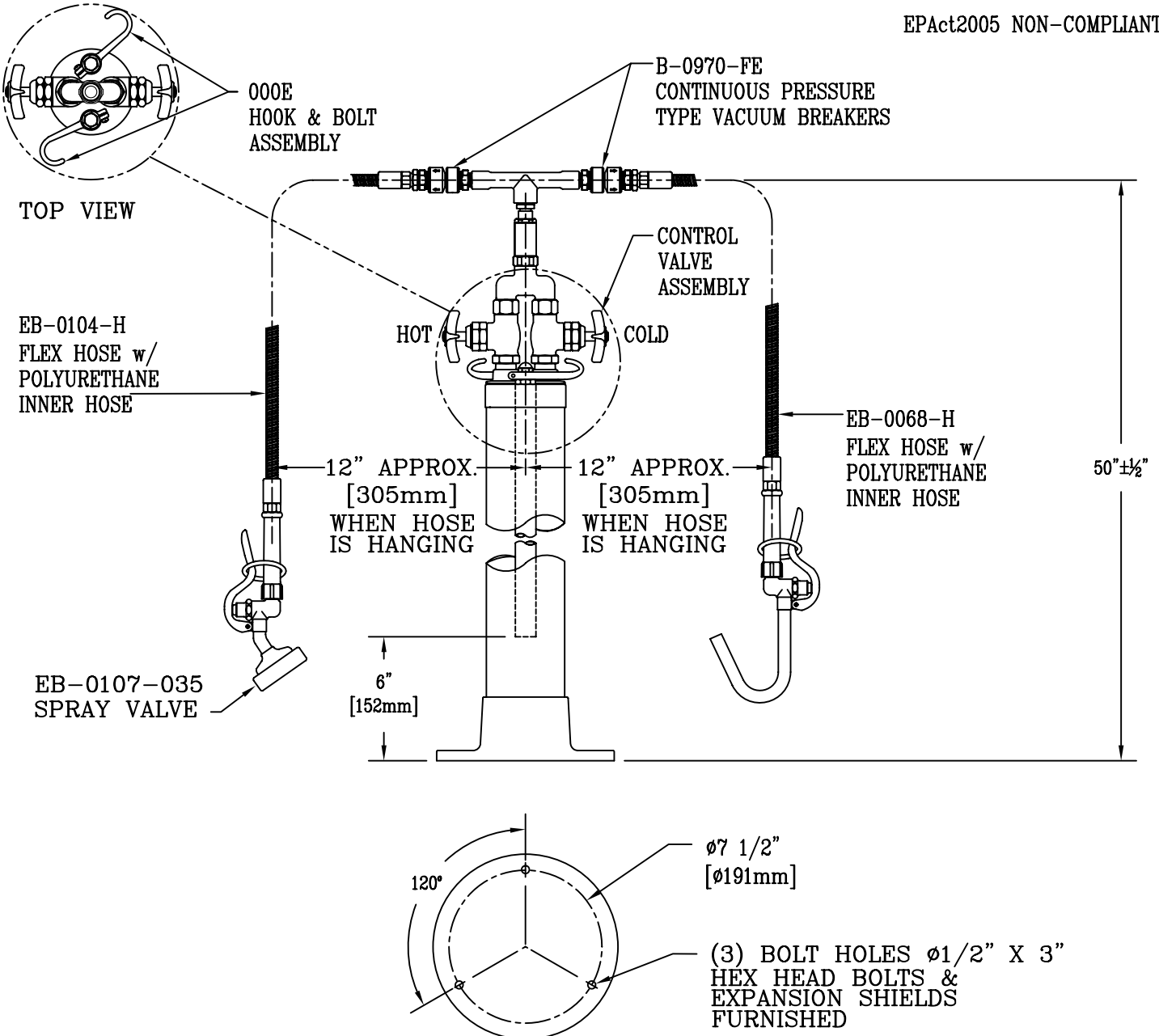
Item No.:

Job Name:

Architect/Engineer Approval:

Notes:

EPAct2005 NON-COMPLIANT



NOTES:

1. ASSEMBLY CONNECTS TO $\phi 1/2"$ PIPE NIPPLES ROUGHED IN FROM FLOOR ON 2" CENTERS TO A HEIGHT OF 6".
2. STANCHION IS BRASS WITH POLISHED CHROMIUM PLATED FINISH.
3. STANDARD FLEX HOSE = 68" LONG
STANDARD FLEX HOSE = 104" LONG
(MODIFIED LENGTHS AVAILABLE UPON REQUEST)

Product Description:

KETTLE KADDY ASSEMBLY

COMBINATION KETTLE FILLER, SPRAY STANCHION,
SEPARATE CONTROL VALVES & VACUUM BREAKERS

Drawn:

KJG

Checked

ARH

Scale:

1:8

Approved

JHB

Date:

06/09/08