



# T&S BRASS AND BRONZE WORKS, INC.

2 Saddleback Cove / P.O. Box 1088  
Travelers Rest, SC 29690



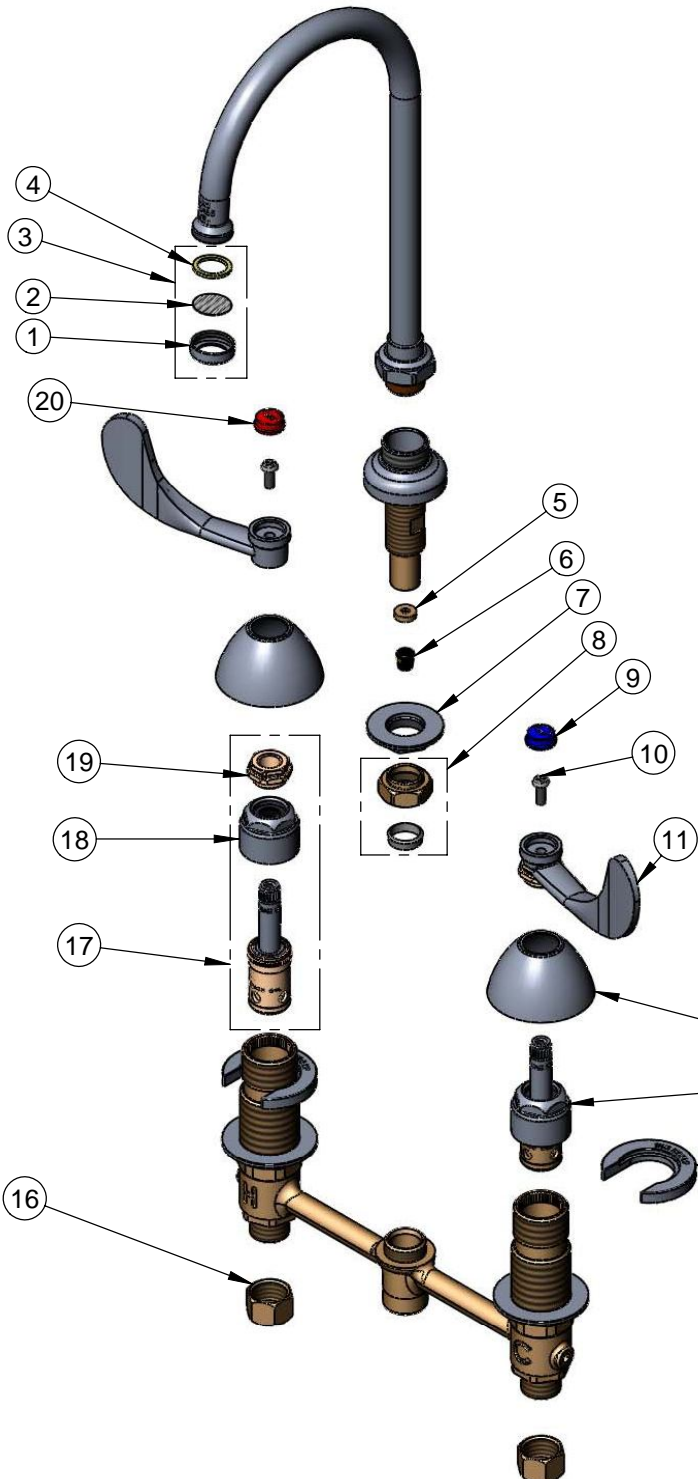
REG. #A2601  
ISO #9001

Model No.

**B-2866-05-LF08**

Item No.

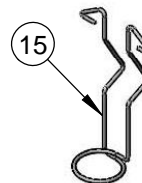
Travelers Rest, SC: 800-476-4103 Simi Valley, CA: 800-423-0150 Fax: 864-834-3518 www.tsbrass.com



ITEM NO.	SALES NO.	DESCRIPTION
1	000863-25	Nozzle Tip & Index Ring
2	001323-45	Screen
3	B-PT	Stream Regulator Outlet
4	001048-45	Nozzle Tip Washer
5	009069-45	Flow Control Holder
6	016232-45	Flow Tower, 1.6 GPM
7	016742-45	Center Flange Nut
8	016745-45	Compression Nut & Fitting
9	001686-45	Blue CW Index
10	000925-45	Lab Handle Screw
11	B-WH4	4" Wrist Action Handle
12	001257-40	Bell Escutcheon
13	016752-40	EZ-Install LTC Eterna (Teflon)
14	016749-45	Sidebody C-Washer
15	016777-45	CWS Hanger
16	000958-20	Coupling Nut
17	016753-40	EZ-Install RTC Eterna (Teflon)
18	016743-25	CWS Bonnet Assembly
19	009002-25	Packing Nut Assembly
20	001194-45	Red HW Index



017245-40  
Installation Repair Kit  
Includes #7, (2)#14, & #15



**Product Specifications:**

EasyInstall Faucet w/ 4" Wrist Action Handles,  
Compression Cartridges, 1.6 GPM Flow Control,  
8" Inlet Centers & Swivel Gooseneck  
w/ B-PT Stream Regulator Outlet

Drawn <b>JRM</b>	Checked <b>GEF</b>	Approved <b>JHB</b>
Scale: <b>NTS</b>		Date: <b>07/31/08</b>