



# T&S BRASS AND BRONZE WORKS, INC.

2 Saddleback Cove / P.O. Box 1088  
Travelers Rest, SC 29690



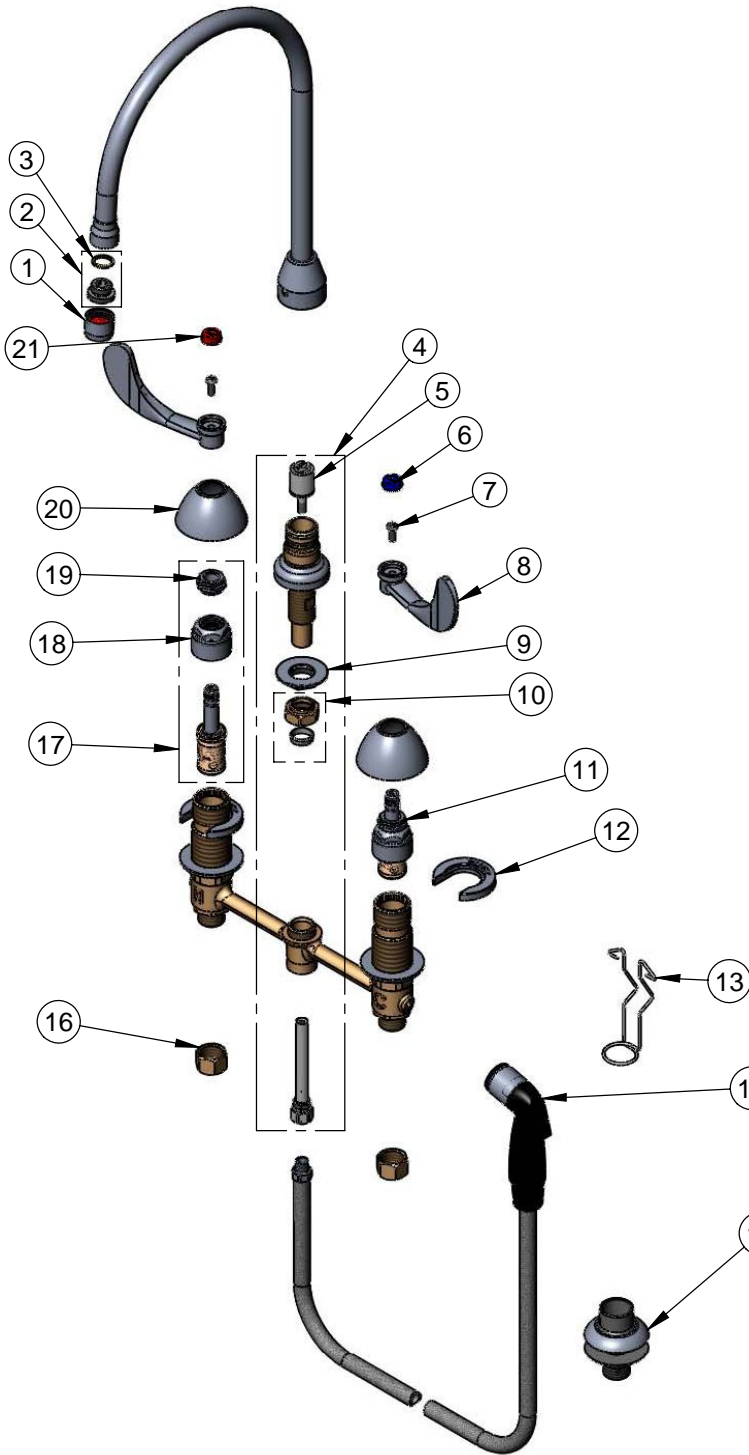
REG. #A2601  
ISO #9001

Model No.

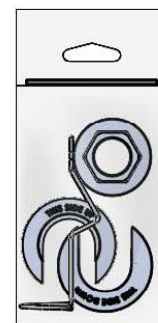
**B-2347-05**

Item No.

Travelers Rest, SC: 800-476-4103 Simi Valley, CA: 800-423-0150 Fax: 864-834-3518 www.tsbrass.com



| ITEM NO. | SALES NO. | DESCRIPTION                       |
|----------|-----------|-----------------------------------|
| 1        | B-0199-01 | 2.2GPM Aerator                    |
| 2        | 044A      | Male Aerator Adapter              |
| 3        | 001043-45 | Washer                            |
| 4        | 017208-40 | Center Body Diverter Asy          |
| 5        | 002338-45 | Diverter                          |
| 6        | 001686-45 | Blue CW Index                     |
| 7        | 000925-45 | Lab Handle Screw                  |
| 8        | B-WH4     | 4" Wrist Action Handle            |
| 9        | 016742-45 | Center Flange Nut                 |
| 10       | 016745-45 | Compression Nut & Fitting         |
| 11       | 016752-40 | CWS Bonnet & LTC Eterna Cartridge |
| 12       | 016749-45 | C-Washer                          |
| 13       | 016777-45 | CWS Hanger                        |
| 14       | 001495-45 | Side Spray                        |
| 15       | 001496-45 | Hose Guide                        |
| 16       | 000958-20 | Coupling Nut                      |
| 17       | 016753-40 | CWS Bonnet & RTC Eterna Cartridge |
| 18       | 016743-25 | CWS Bonnet Assembly               |
| 19       | 009002-25 | Packing Assembly                  |
| 20       | 001257-40 | Bell Escutcheon                   |
| 21       | 001194-45 | Red HW Index                      |



017245-40

Installation Repair Kit  
Includes #9, (2)#12, & #13

Product Specifications:

EasyInstall Faucet w/ 4" Sidespray, 4" Wrist Action Handles, Compression Cartridges, 8" Inlet Centers & Gooseneck w/ 2.2GPM Aerator

|                      |                       |                          |
|----------------------|-----------------------|--------------------------|
| Drawn<br><b>JRM</b>  | Checked<br><b>GEF</b> | Approved<br><b>JHB</b>   |
| Scale:<br><b>NTS</b> |                       | Date:<br><b>07/31/08</b> |