



# S19-274B, S19-274BL, S19-274F, S19-274FL Laboratory Application Swing-Away Eyewash & Eye/Face Wash

- Halo™ delivers the most effective eye/face washdown coverage and spray pattern
- Right- and left-hand mount options
- Exceeds American National Standard Z358.1 Specifications
- Chrome-plated brass pipe and fittings
- Universal identification sign and inspection tag included
- Fully-assembled & factory-tested eyewash or eye/face wash with hinged dust covers
- Full, one-year warranty
- Halo is covered by one of more of the following patents: 9,700,484; 9,314,398; D662220; D673298; D662605; D685920. Other patents pending.

## Specifications

Unit design saves space and fits easily into any work environment. Halo eyewash or eye/face wash provides effective washdown coverage and spray pattern. Units operate quickly by a large, highly visible push handle. Safe, steady water flow under varying water supply conditions from 30-90 psi is assured by integral flow control.



*The ANSI Z358.1 standard requires an uninterrupted supply of flushing fluid at a minimum 30 psi flowing pressure.*



*This plumbing fixture is not intended to dispense water for human consumption through drinking or for preparation of food or beverages.*

## Standard Equipment

### Eyewash

The Halo eyewash system offers a high performance rinsing platform that provides rapid relief to an individual's eyes that have been injured by chemicals or particulate. The eyewash includes an integral 5.1 gpm flow control providing water at a safe velocity while maintaining its effectiveness (exceeds minimum water flow of 0.4 gpm at 30 psi). Safe, steady water flow under varying water supply conditions from 30–90 psi is assured by integral flow control in the sprayhead assembly.

### Eye/Face Wash

The Halo eye/face wash system offers a high performance rinsing platform that provides rapid relief to an individual's eyes and face that have been injured by chemicals or particulate. This system provides the most complete face wash available in the market. The eye/face wash includes an integral 5.1 gpm flow control providing water at a safe velocity while maintaining its effectiveness (exceeds minimum water flow of 3.0 gpm at 30 psi). Safe, steady water flow under varying water supply conditions from 30-90 psi is assured by integral flow control in the sprayhead assembly.

### Valve

Chrome-plated brass ½" NPT stay-open ball valve. Hand operated by a large, highly visible stainless steel push handle.

### Pipe and Fittings

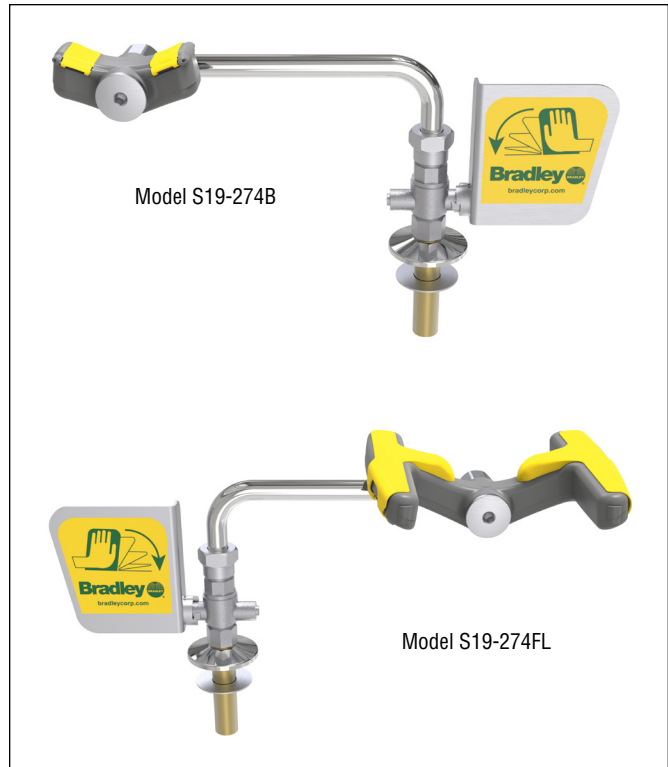
Chrome-plated brass.

### Water Supply

½" NPT.

## Product Compliance

- Classified by Underwriters Laboratory Inc., to ANSI Z358.1



## Model

## Description

**S19-274B**

Laboratory Application Swing-Away Eyewash, Right-Hand Mount

**S19-274BL**

Laboratory Application Swing-Away Eyewash, Left-Hand Mount

**S19-274F**

Laboratory Application Swing-Away Eye/Face Wash, Right-Hand Mount

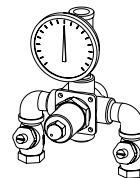
**S19-274FL**

Laboratory Application Swing-Away Eye/Face Wash, Left-Hand Mount

### Recommended Option:

[Navigator S19-2000 EFX8  
Emergency Thermostatic Mixing Valve](#)

## NAVIGATOR



Satisfies ANSI Z358.1  
tepid water requirements.



# S19-274B, S19-274BL, S19-274F, S19-274FL Laboratory Application Swing-Away Eyewash & Eye/Face Wash

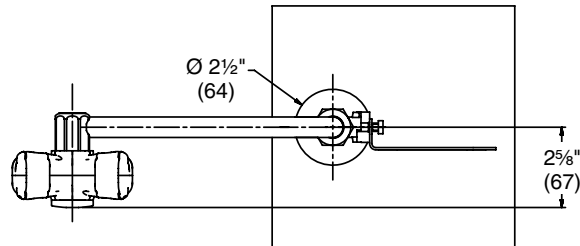
## Dimensions – Models S19-274B & S19-274BL

(mm)

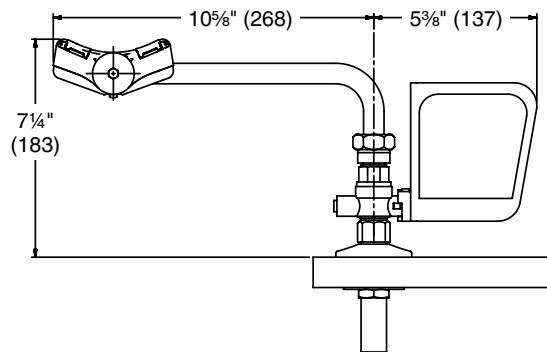


Model S19-274B (right-hand mount) is shown.

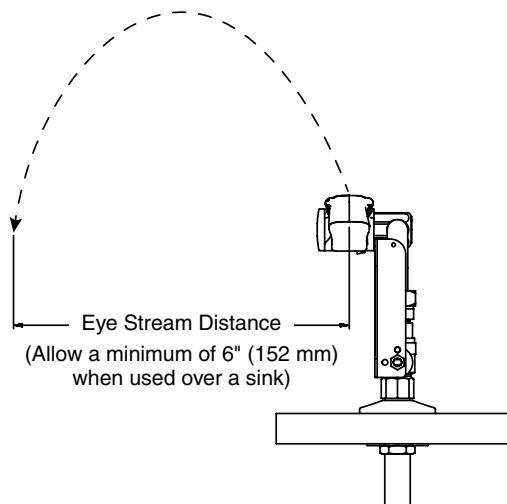
### Top View



### Front View



### Side View





# S19-274B, S19-274BL, S19-274F, S19-274FL Laboratory Application Swing-Away Eyewash & Eye/Face Wash

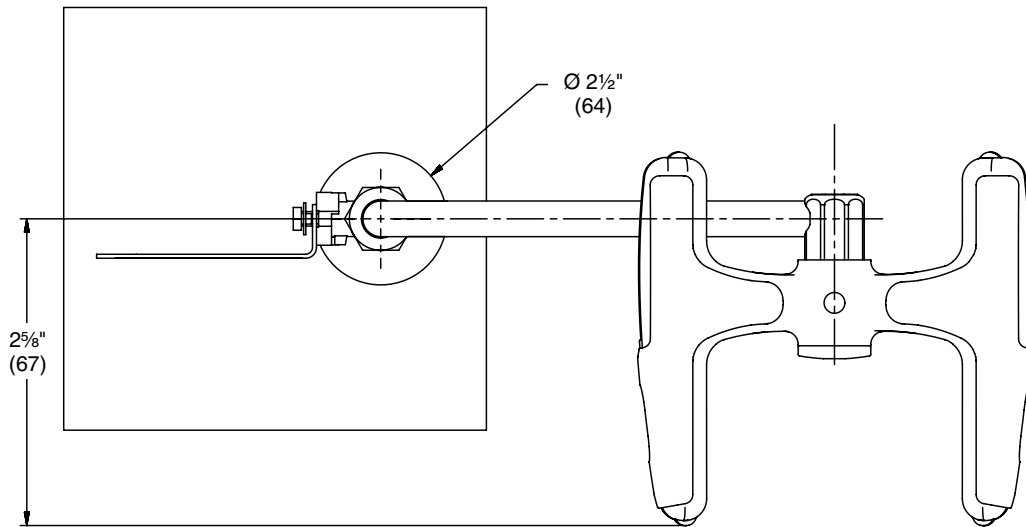
## Dimensions – Model S19-274F & S19-274FL

(mm)



Model S19-274FL (left-hand mount) is shown.

### Top View



### Front View

