

# CHICAGO FAUCETS

a Geberit company



2100 SOUTH CLEARWATER DRIVE  
DES PLAINES, ILLINOIS 60018-5999

FITTING NO.

9011

SUBMITTED MODEL NO.

JOB NAME

ITEM NO.

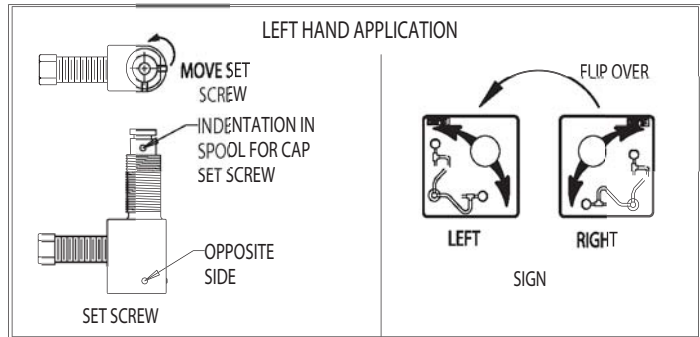
SUBMITTED AS SHOWN

SUBMITTED AS NOTED

SEE ATTACHED FOR  
SUBMITTED MODIFICATION

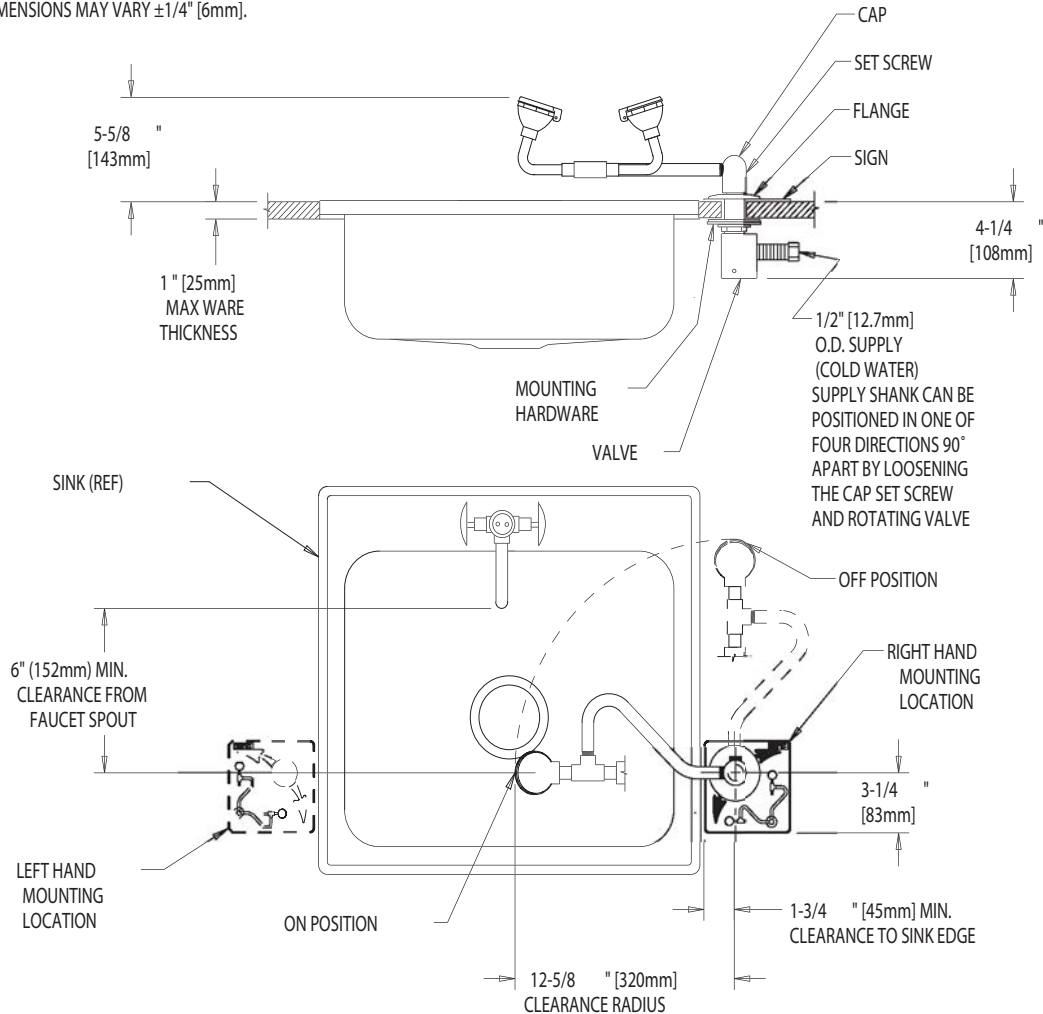
**NOTES:**

- 1) THE ANSI STANDARD SPECIFIES EYEWASH NOZZLE HEIGHTS TO BE 33" [838mm] TO 45" [1143mm] ABOVE THE FLOOR.
- 2) INSTALL SO THAT EYEWASH HEADS ARE OVER SINK WHEN ACTIVATED.
- 3) DRILL ONE Ø1-3/8" [35mm] HOLE WHERE FITTING IS TO BE INSTALLED.
- 4) THESE DIMENSIONS MAY VARY ±1/4" [6mm].



IS ASSUMED FOR USE OF SUPERCEDED OR VOIDED DATA.

ROUGHING IN DIMENSIONS MAY VARY AND ARE SUBJECT TO CHANGE. NO RESPONSIBILITY



DIMENSIONS IN INCHES AND [MILLIMETERS].

**TECHNICAL DATA**

- DECK MOUNTED SWING-FORWARD EYE/FACE WASH
- DUAL HIGH IMPACT ABS PLASTIC SPRAY HEADS IN HIGH VISIBILITY YELLOW
- INTEGRAL DUST COVERS FOR SPRAY HEADS THAT RELEASE WHEN VALVE IS ACTIVATED
- SINGLE ACTION SWING-FORWARD OPERATION ACTIVATES BALL VALVE

- RIGHT HAND MOUNTING LOCATION
- FIELD CONVERTABLE FOR LEFT HAND APPLICATION
- HIGH VISIBILITY EMERGENCY SIGN
- MEETS ANSI STANDARD Z358.1
- FINISH: NO FINISH

DATE: 8-26-03

BY: JAR

CHK'D:

APP'D:

REV: B

9011