

CHICAGO FAUCETS
a Geberit company

2100 South Clearwater Drive
Des Plaines, IL 60018
Phone: 847-803-5000
Fax: 847-803-5454
www.chicagofaucets.com

REPAIR PARTS

FITTING NO.

923-LWSLCP

SUBMITTED MODEL NO.

BY: SID

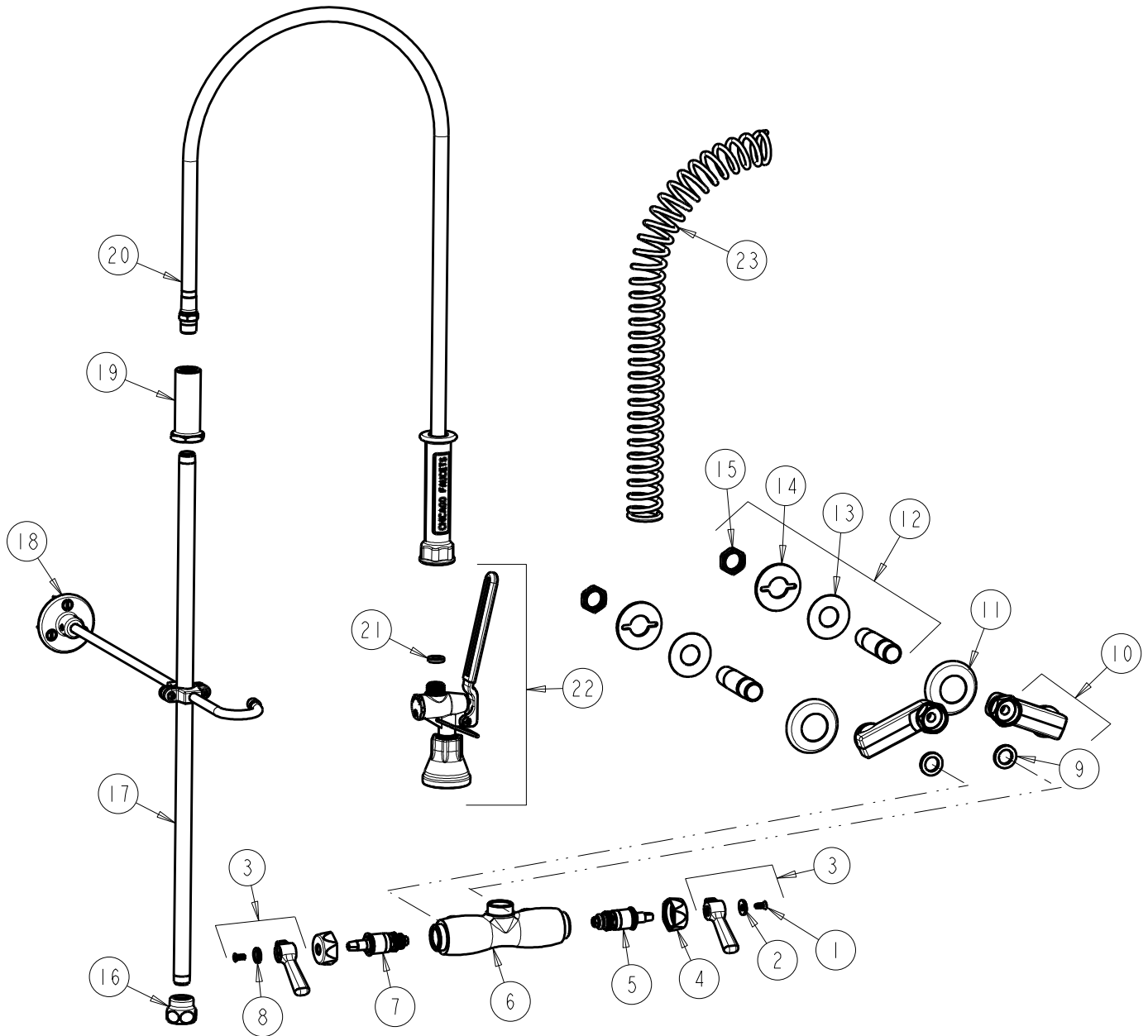
DATE: 11-05-07

CHK: *[Signature]*

REV: 05-13-11

ITEM NO.

FOR TECHNICAL ASSISTANCE
1-800-TEC-TRUE (1-800-832-8783)



ITEM	PART NO.	DESCRIPTION	ITEM	PART NO.	DESCRIPTION
1	420-010JKRCF	SCREW, 10-32 UNC PH 1/2	13	52-007JKNF	WASHER, RUBBER
2	633-123JKNF	INDEX BUTTON (BLUE)	14	807-112JKNF	WASHER
3	369-PRJKCP	LEVER HANDLE ASSEMBLY (PAIR)	15	49-004JKRBF	LOCKNUT
4	444-005JKCP	CAP	16	BA2JKCP	ADAPTER 3/8 NPT X 1 1/16-18 UNEF
5	1-099XTJKNF	QUATURN UNIT (RH)	17	919-039JKCP	3/8" NPT X 23" RISER
6	-----	VALVE BODY (NOT SOLD SEPARATELY)	18	902-MHJKCP	PIPE STRAP AND HOOK ASSEMBLY
7	1-100XTJKNF	QUATURN UNIT (LH)	19	919-038JKCP	GUIDE SHANK
8	633-023JKNF	INDEX BUTTON (RED)	20	83-44NF	44" HOSE AND HANDLE ASSEMBLY
9	1-011JKNF	WASHER, .97 X .62 X .12	21	919-243JKNF	GASKET, .685 X .375 X .125
10	HJKCP	'H' ARM ASSEMBLY w/WASHER	22	90-LABCP	PRE-RINSE VALVE, LOW FLOW
11	1-055JKCP	FLANGE	23	919-014JKCP	SPRING
12	932-001KJKRBF	INLET SHANK ASSEMBLY			