

CHICAGO FAUCETS
a Geberit company

2100 South Clearwater Drive
Des Plaines, IL 60018
Phone: 847-803-5000
Fax: 847-803-5454
www.chicagofaucets.com

REPAIR PARTS

BY: SID DATE: 01-22-08
CHK: REV:

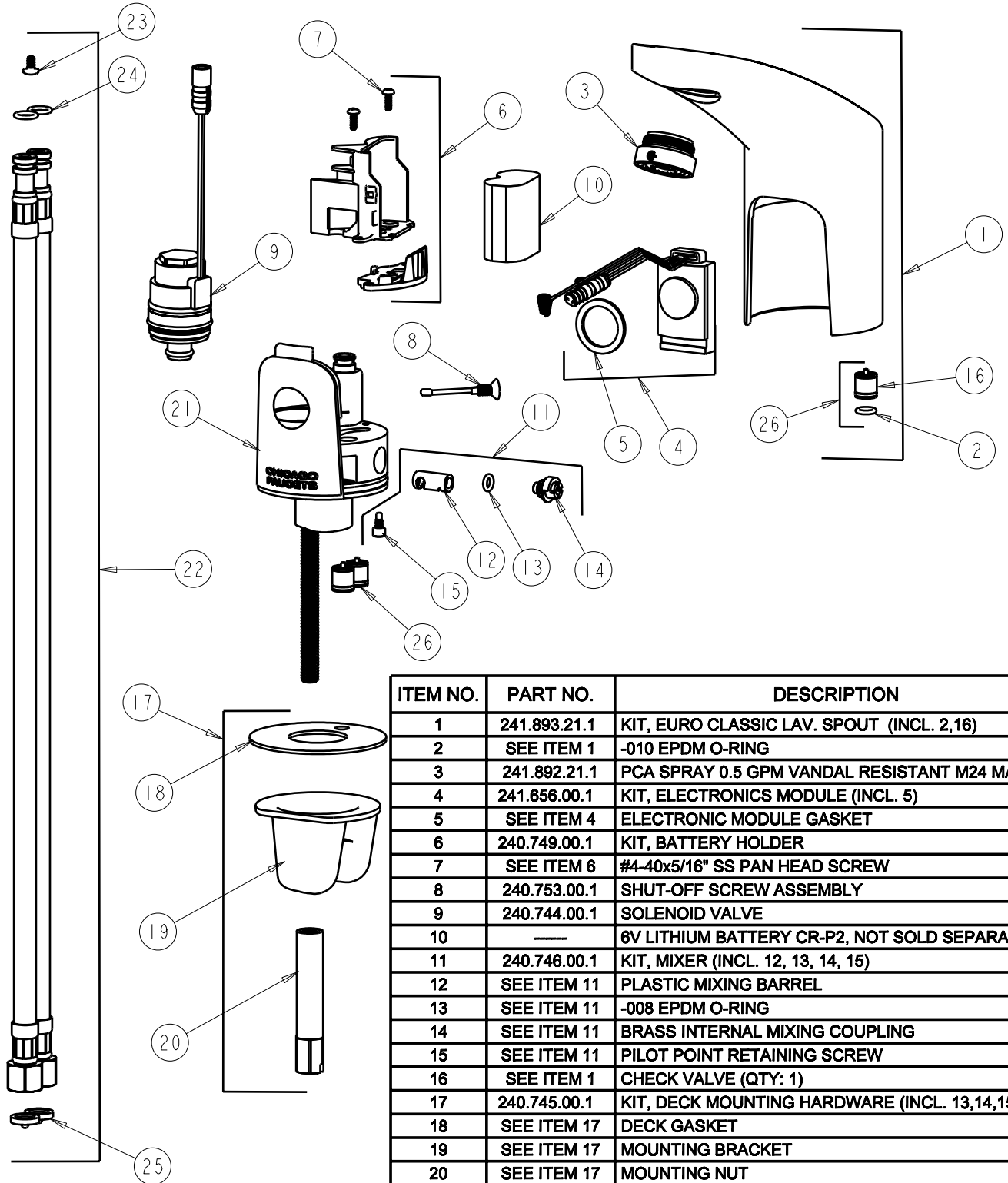
FITTING NO.

116.415.21.1

SUBMITTED MODEL NO.

ITEM NO.

FOR TECHNICAL ASSISTANCE
1-800-TEC-TRUE (1-800-832-8783)



ITEM NO.	PART NO.	DESCRIPTION
1	241.893.21.1	KIT, EURO CLASSIC LAV. SPOUT (INCL. 2,16)
2	SEE ITEM 1	-010 EPDM O-RING
3	241.892.21.1	PCA SPRAY 0.5 GPM VANDAL RESISTANT M24 MALE
4	241.656.00.1	KIT, ELECTRONICS MODULE (INCL. 5)
5	SEE ITEM 4	ELECTRONIC MODULE GASKET
6	240.749.00.1	KIT, BATTERY HOLDER
7	SEE ITEM 6	#4-40x5/16" SS PAN HEAD SCREW
8	240.753.00.1	SHUT-OFF SCREW ASSEMBLY
9	240.744.00.1	SOLENOID VALVE
10	---	6V LITHIUM BATTERY CR-P2, NOT SOLD SEPARATELY
11	240.746.00.1	KIT, MIXER (INCL. 12, 13, 14, 15)
12	SEE ITEM 11	PLASTIC MIXING BARREL
13	SEE ITEM 11	-008 EPDM O-RING
14	SEE ITEM 11	BRASS INTERNAL MIXING COUPLING
15	SEE ITEM 11	PILOT POINT RETAINING SCREW
16	SEE ITEM 1	CHECK VALVE (QTY: 1)
17	240.745.00.1	KIT, DECK MOUNTING HARDWARE (INCL. 13,14,15)
18	SEE ITEM 17	DECK GASKET
19	SEE ITEM 17	MOUNTING BRACKET
20	SEE ITEM 17	MOUNTING NUT
21	---	BODY, NOT SOLD SEPARATELY
22	240.693.00.1	KIT, SS BRAIDED HOSE (QTY: 1) (INCL. 18,19,20)
23	SEE ITEM 22	#6-32x1/4" SS BINDER HEAD SCREW
24	SEE ITEM 22	-011 EPDM O-RING
25	3300-005	FILTER GASKET
26	241.653.00.1	KIT, CHECK VALVES & O-RINGS