

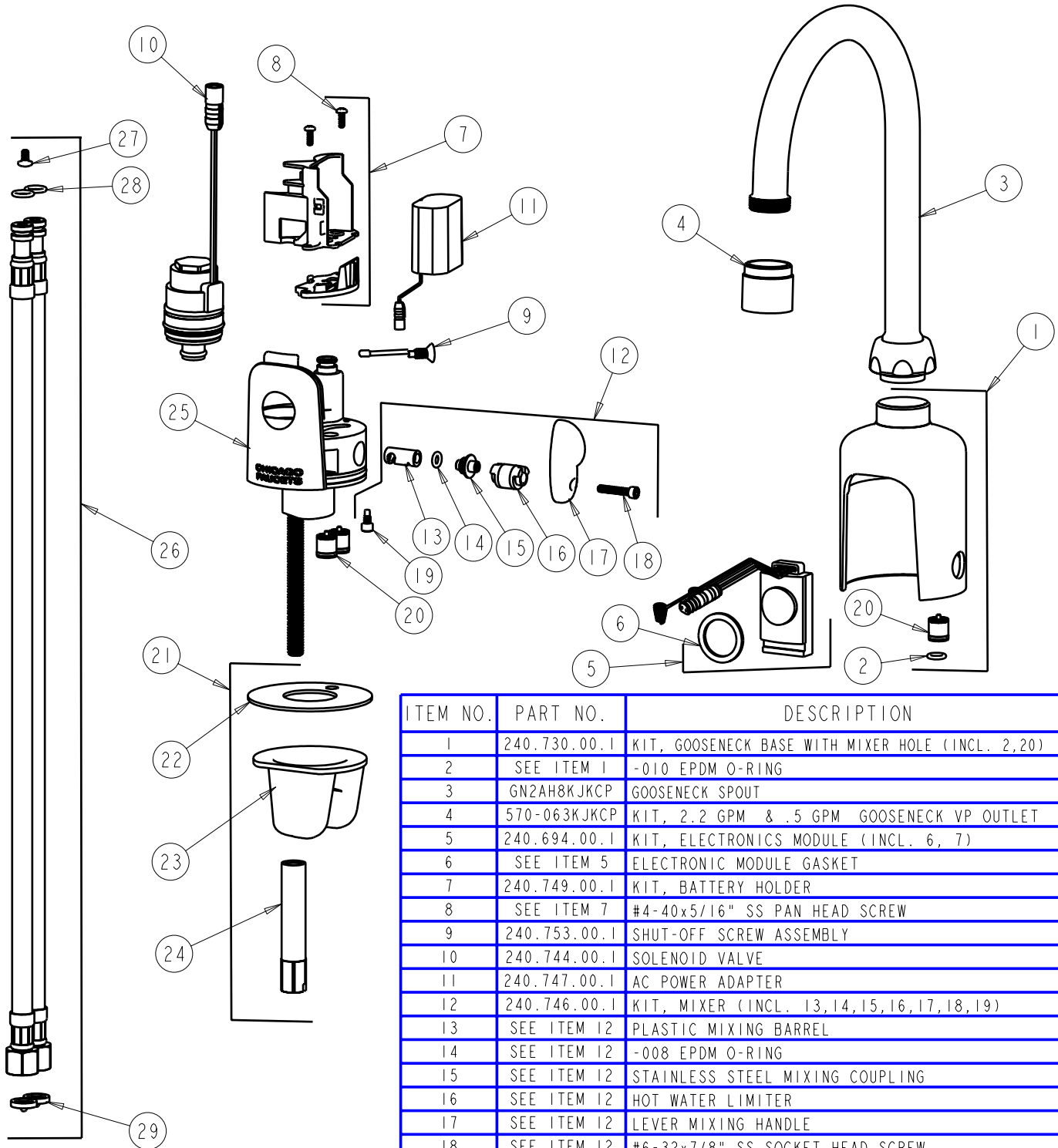
# PARTS LIST

BY: SID  
CHK'D: *[Signature]*



FINISH: AS SPECIFIED  
DATE: 06-26-06  
REV: 08-08-07

116.123.21.1



ITEM NO.	PART NO.	DESCRIPTION
1	240.730.00.1	KIT, GOOSENECK BASE WITH MIXER HOLE (INCL. 2,20)
2	SEE ITEM 1	-010 EPDM O-RING
3	GN2AH8KJKCP	GOOSENECK SPOUT
4	570-063KJKCP	KIT, 2.2 GPM & .5 GPM GOOSENECK VP OUTLET
5	240.694.00.1	KIT, ELECTRONICS MODULE (INCL. 6, 7)
6	SEE ITEM 5	ELECTRONIC MODULE GASKET
7	240.749.00.1	KIT, BATTERY HOLDER
8	SEE ITEM 7	#4-40x5/16" SS PAN HEAD SCREW
9	240.753.00.1	SHUT-OFF SCREW ASSEMBLY
10	240.744.00.1	SOLENOID VALVE
11	240.747.00.1	AC POWER ADAPTER
12	240.746.00.1	KIT, MIXER (INCL. 13,14,15,16,17,18,19)
13	SEE ITEM 12	PLASTIC MIXING BARREL
14	SEE ITEM 12	-008 EPDM O-RING
15	SEE ITEM 12	STAINLESS STEEL MIXING COUPLING
16	SEE ITEM 12	HOT WATER LIMITER
17	SEE ITEM 12	LEVER MIXING HANDLE
18	SEE ITEM 12	#6-32x7/8" SS SOCKET HEAD SCREW
19	SEE ITEM 12	PILOT POINT RETAINING SCREW
20	550-009	CHECK VALVE (QTY: 1)
21	240.745.00.1	KIT, DECK MOUNTING HARDWARE (INCL. 22,23,24)
22	SEE ITEM 21	DECK GASKET
23	SEE ITEM 21	MOUNTING BRACKET
24	SEE ITEM 21	MOUNTING NUT
25	-----	BODY, NOT SOLD SEPARATELY
26	240.693.00.1	KIT, SS BRAIDED HOSE (QTY: 1) (INCL. 27,28,29)
27	SEE ITEM 26	#6-32x1/4" SS BINDER HEAD SCREW
28	SEE ITEM 26	-011 EPDM O-RING
29	3300-005	FILTER GASKET